



Streets as Dynamic Urban Infrastructure

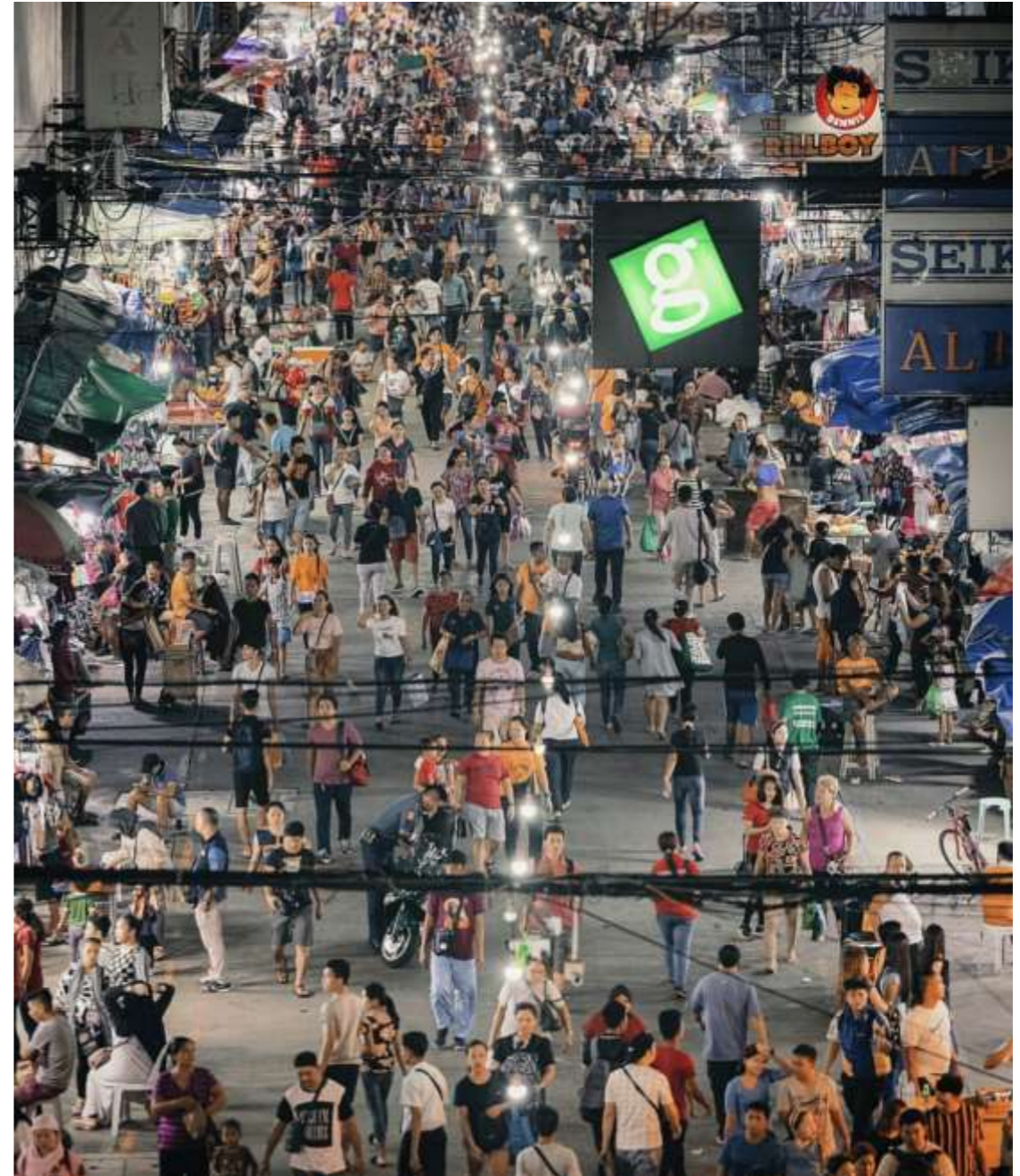
Julia C. Nebrija
Philippine Japan Initiative for Clark (PJIC)

An aerial photograph of a city, showing a dense residential area in the foreground and a modern skyline of skyscrapers in the background. The foreground is filled with a dense grid of small, colorful buildings, likely a slum or a densely populated urban area. The background features a modern skyline with numerous high-rise buildings, including a prominent tower with a golden spire. The sky is overcast with grey clouds. A white banner with black text is overlaid on the image.

better streets make better cities

what is a street?

- a place for vehicles to drive on when moving from one place to another....
- or an urban space through which people experience a city?



- public health and safety
- quality of life
- environmental sustainability
- economic sustainability
- social equity

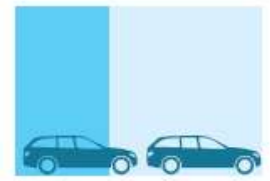


The proposed target for public space is **45% of land** should be allocated to streets and public space

- This can be broken down into **30% streets and sidewalks** and 15% open spaces, green spaces, and public facilities
- The target for street connectivity is between 80-120 intersections per square kilometer.
- Optimal level of 100 intersections per square kilometer with each street having an average width of 15 meters

People capacity of different modes.

The illustration shows the hourly capacity of a 3 m-wide lane (or equivalent width) by different modes at peak conditions with normal operations.² Ranges relate to the type of vehicles, traffic signal timing, operation, and average occupancy.



Private Motor Vehicles
600–1,600/hour



Mixed Traffic With Frequent Buses
1,000–2,800/hour



Two-way Protected Bikeway
6,500–7,500/hour



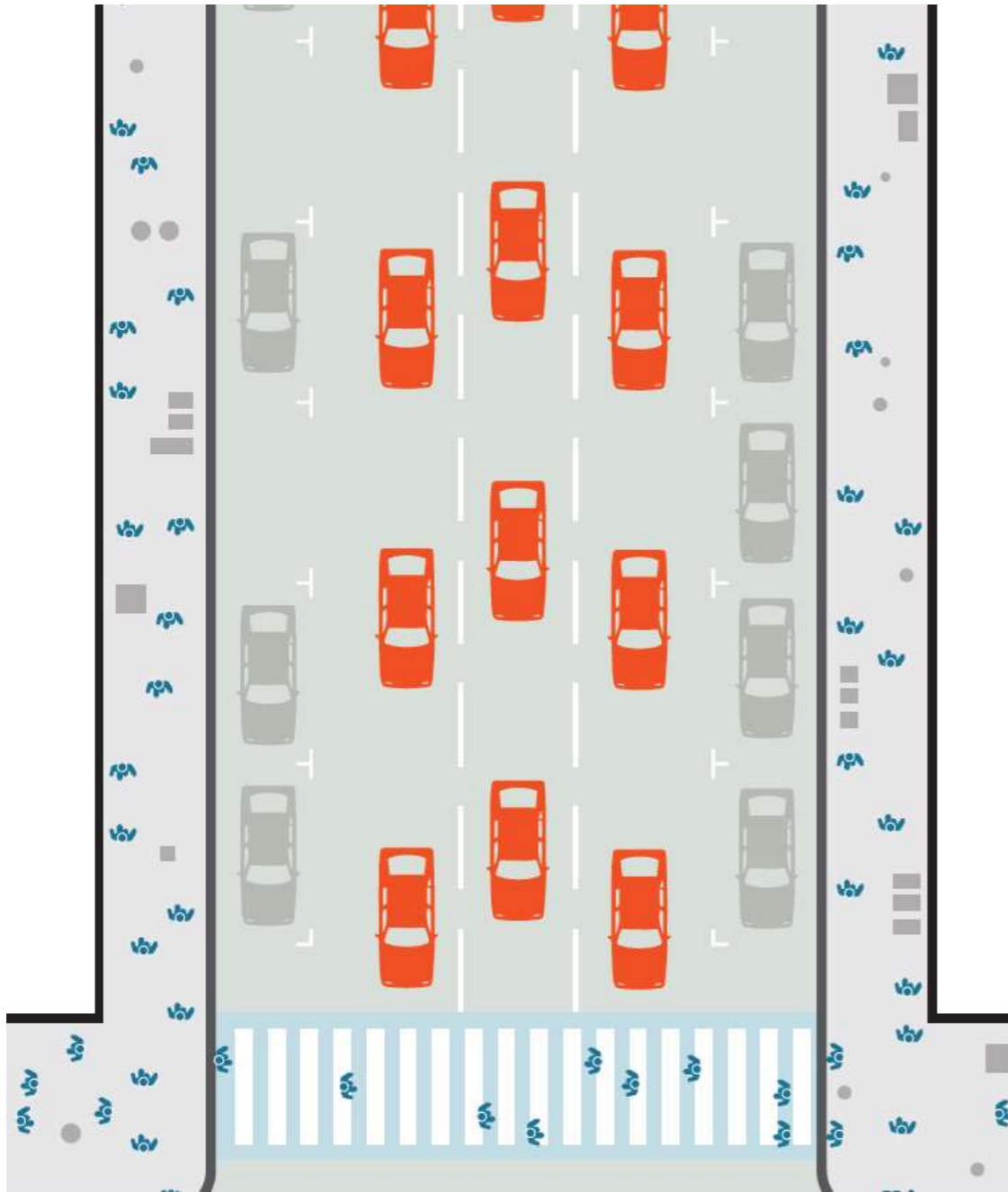
Dedicated Transit Lanes
4,000–8,000/hour



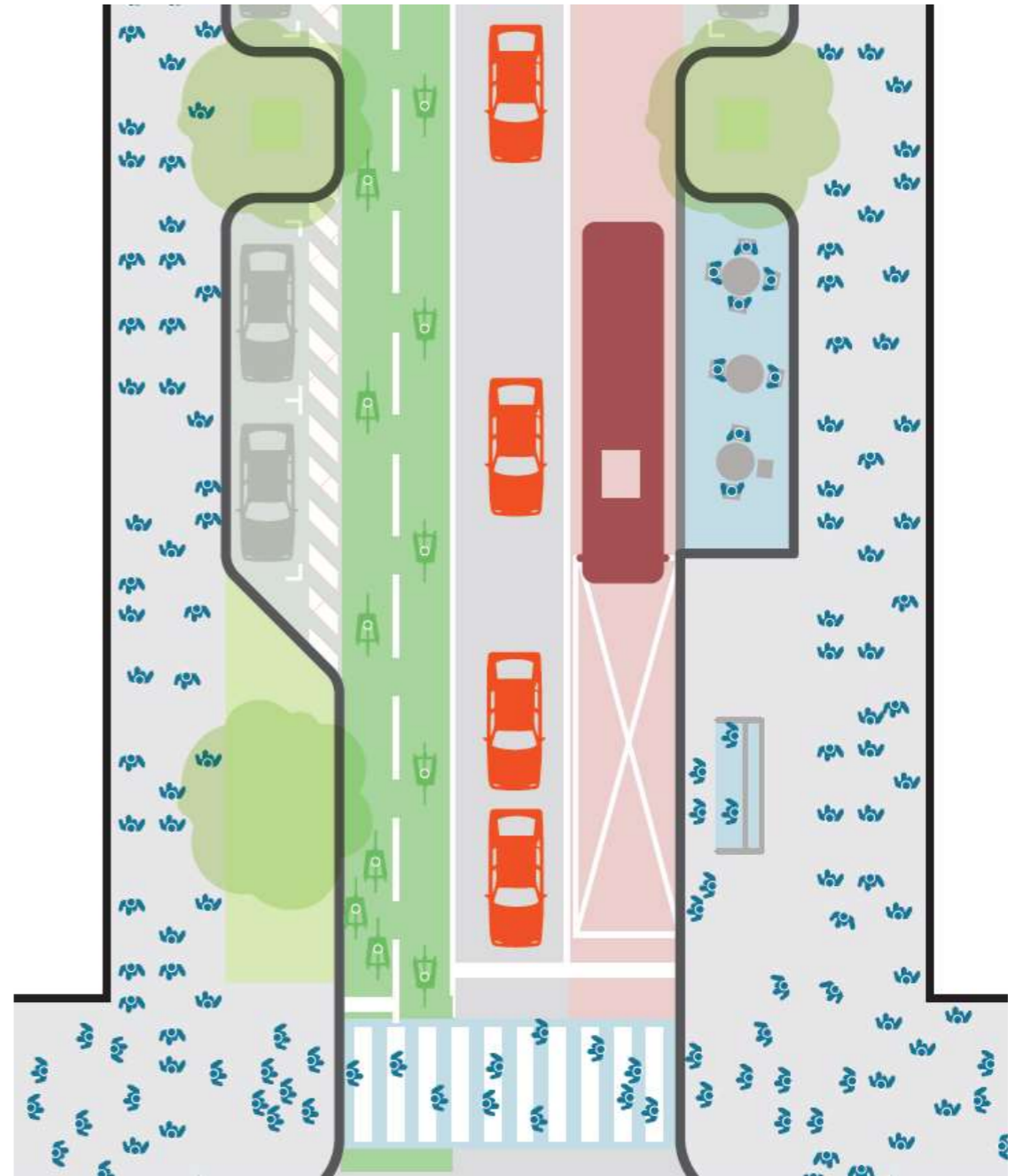
Sidewalk
8,000–9,000/hour



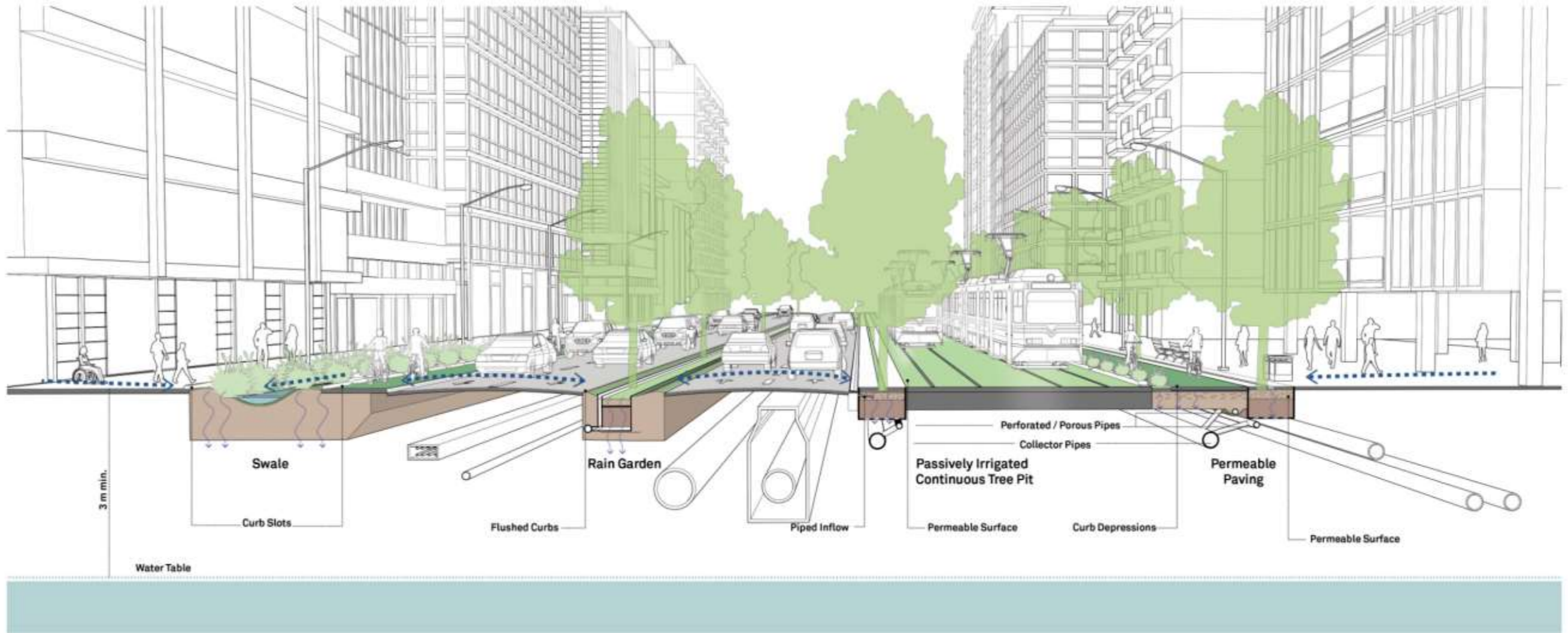
On-street Transitway, Bus Or Rail
10,000–25,000/hour



total capacity:
12,300 people/hour



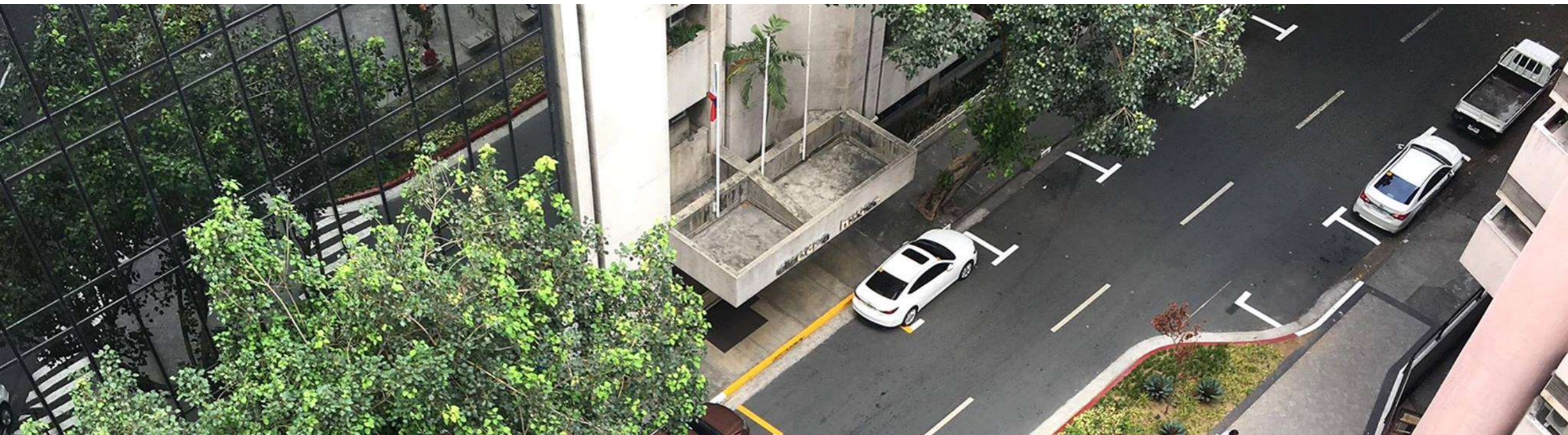
total capacity:
30,100 people/hour





Activate Streets





Transform Existing Spaces



An architectural rendering of a modern urban development. The scene is viewed from an elevated perspective, showing a central plaza with a large green lawn and paved walkways. People are seen walking and cycling on the paths. The buildings are modern, with glass facades and green roofs. The sky is blue with a few birds flying. The overall atmosphere is bright and sunny.

Build Better

An aerial photograph of a city. The background shows a dense skyline of modern skyscrapers under a cloudy sky. The foreground is dominated by a vast, tightly packed residential area with numerous small buildings and colorful roofs. A white rectangular box is overlaid on the center of the image, containing text.

thank you!

julia.nebrija@gmail.com