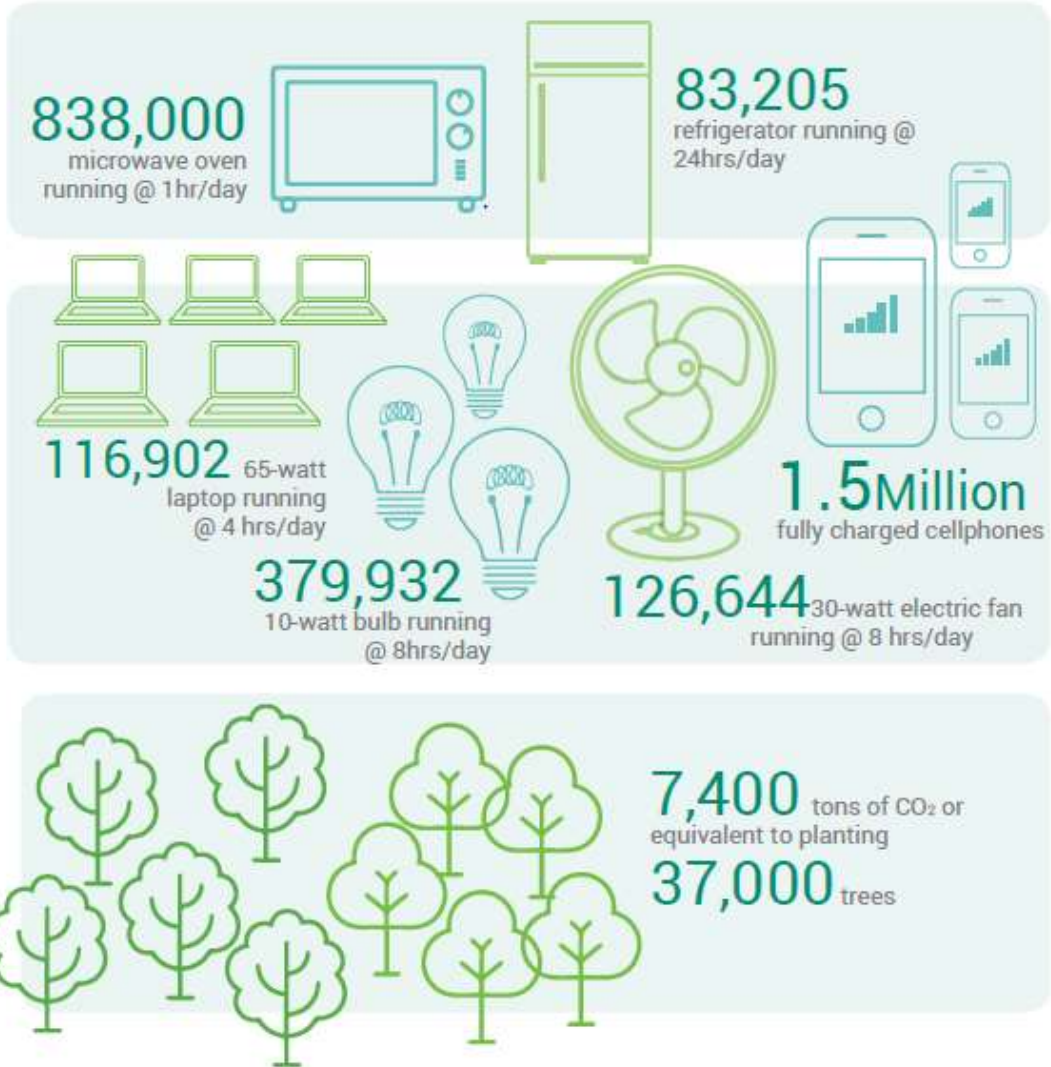


A thick, dark blue vertical line on the left side of the page, starting with a horizontal bar at the top and tapering to a point at the bottom.

Sustainable Cities Summit: Business Opportunities Meet Development Challenges

Renewable Energy: Solar Panels



9.245 Total MW Capacity generated from solar panels

Sustainable Green Building Designs

**LEED
Gold
Certified**

LEED Certified: 2017

SM Aura Premier



SM Prime Holdings Inc. DRR Strategies



Investment in Infrastructure for SM Malls



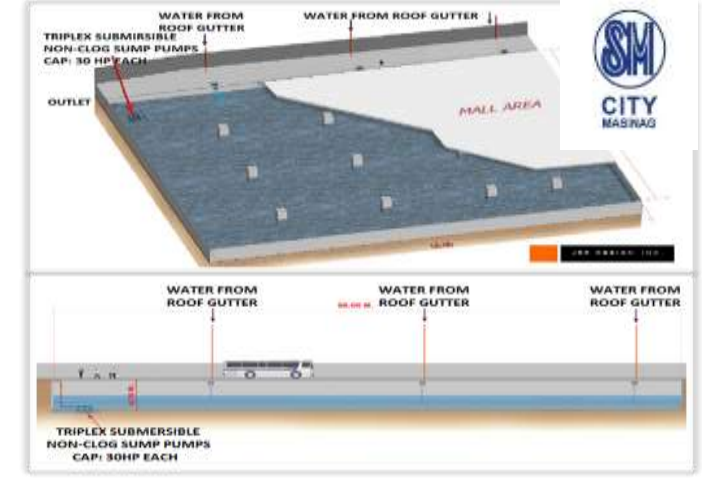
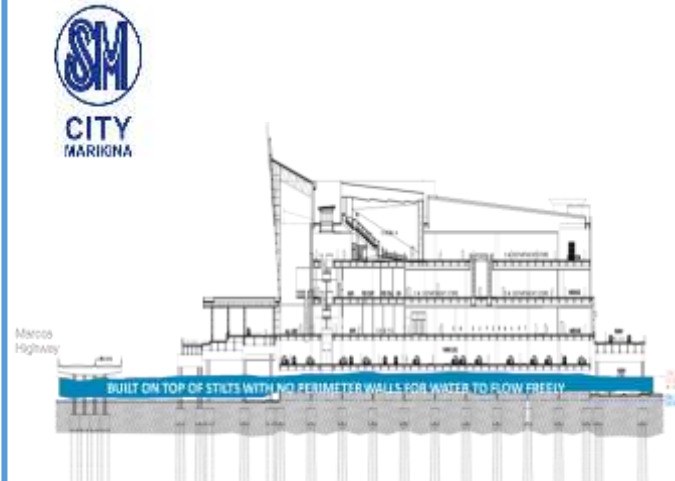
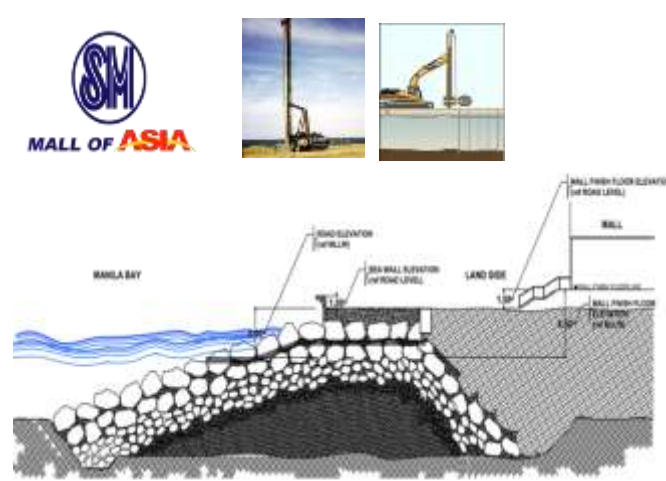
Capacity Building and Collaboration



Public Private Partnerships National, Regional and Global Levels

Platform No. 1: Investment in Infrastructure for SM Malls

DISASTER RESILIENT FEATURES



SHOPPING CENTERS

SM MALL OF ASIA

SM MARIKINA

SM MASINAG and 20 more malls

HAZARDS

- Sea level rise
- Storm Surge
- Liquefaction
- Severe Wind

- Flooding
- Earthquake

- Flooding
- Earthquake

STRATEGIES

- Built 4.5 m high MWWL
- Wick Drains
- Drainage Channel
- Water Recycling

- Built on stilts
- Elevated Parking
- 20 M additional setback
- Water Recycling

- With rainwater catchment provision
- Water Recycling

Platform No. 2: Investment in Capacity Building and Collaboration



Main entry point for the private sector in reducing disaster risk.

What is ARISE

ARISE stands for the UNISDR Private Sector Alliance for Disaster Resilient Societies. ARISE is a UNISDR-led network of private sector entities, whose members voluntarily commit to align with the Sendai Framework. ARISE members share information, experience, activities, and projects, while the level of involvement and resources is at the discretion of each member. Most activities and interactions are a local and regional level, and ARISE is structured accordingly.

Sustainable development cannot be achieved unless disaster risk is reduced

Platform No. 2: Investment in Capacity Building and Collaboration

SM Resilience Center: BCP Program for SME's DATA STORAGE PROGRAM 2,300 SME's enrolled

FEATURES

- Data storage facility for SMEs
- Free service on data storage
- Data upload via web portal

- SMEs BCP Training
- Incident Command System (ICS)
- Basic Life Support (BLS)

- Communication Hub
- Risk Assessment
- Data/information repository



Platform No. 2: Investment in Capacity Building and Collaboration

Disaster Risk Management Strategies



Education & Training



Urban Risk Reduction & Resilience

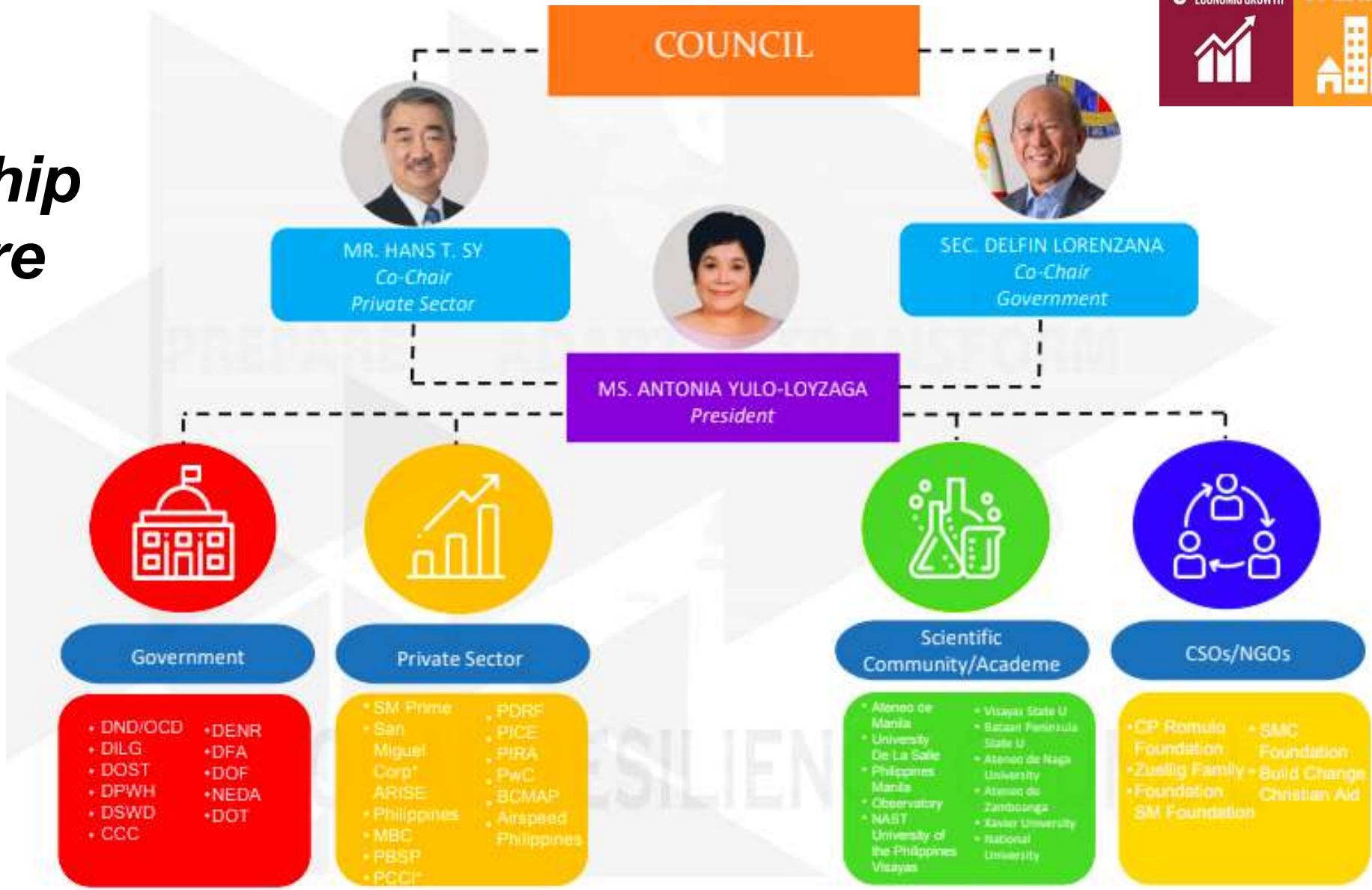


SUPPORTED BY
GOVERNMENT:



Platform 3: Public-Private Partnerships in the National, Regional and Global Levels

NRC Partnership Structure



Platform 3: Public-Private Partnerships in the National, Regional and Global Levels

LEADERSHIP PROGRAM



THREE-YEAR RUNWAY



THE RESILIENCE FRAMEWORK



Source:



SM Prime supports Sustainable Development Goals (SDGs)

1 NO POVERTY
 **13,385** 3rd party service providers i.e. Janitor, Security Guards were hired from the localities where SM Prime's businesses are located

2 ZERO HUNGER
 **1,410** beneficiaries of four Feeding Programs spearheaded by the Customer Relations Services Division in 18 malls nationwide
6,000 estimated breastfeeding mothers, together with their children and family members, participated at the Hakab Nat Breastfeeding month celebration

5 GENDER EQUALITY
 **2** companies have female Presidents
55% women in managerial and executive positions.
 Policies on gender equality are in place and reported cases of discrimination/harassment, if any, are acted upon

6 CLEAN WATER AND SANITATION
 **PhP 3.5M** donated to UNICEF Healthier Kids in School: Scaling Up WASH in Public Elementary Schools in the Philippines
77,000 elementary school children beneficiaries of UNICEF Healthier Kids in School Program
35% wastewater treated equivalent to **2,044** Olympic-sized pool
4.2M mall goers have access to hand-washing facilities in SM Prime establishments

12 RESPONSIBLE CONSUMPTION AND PRODUCTION
 **166,549** seven-year old trees saved while **9,500** employees, community residents participated in Trash to Cash Program
20,421 students participated in the Green Film Festival quarterly film showing
19 out of 21 SMDC Residences are completely fitted with LED lighting in all common areas


13 CLIMATE ACTION
 **234** tenants oriented on SM Business Continuity Planning (SM BCP)
50 Managers attended the Incident Command System (ICS) for disaster preparedness and response
8 Local Government Units partnered with NRC for Resilience Leadership Program

3 GOOD HEALTH AND WELL-BEING
 **1,000** women joined in the Pink Ribbon Day and Power in Pink advocacy events for Breast Cancer
500 seafarers present during the Seafarer's Mental Health Awareness celebration
70+ retainer doctors **70+** company-owned clinics
11,000+ employees with health insurance
0 incident of employee intoxication and substance abuse
NO smoking policy implemented in all business units
 Free Annual Physical Exam for all employees
 Random Drug Testing conducted yearly

4 QUALITY EDUCATION
 **92** public school buildings and **296** classrooms with complete facilities and fixtures donated by SM Prime
482 employees and tenants underwent Company sponsored training for Pollution Control Officer (PCO)
2,748 beneficiaries of educational campaigns on environmental protection and waste management by Hamilo Coast in partnership with World Wide Fund for Nature (WWF) Philippines

7 AFFORDABLE AND CLEAN ENERGY
 **9,245** Total MW capacity of solar energy generated from solar panels installed in malls in Philippines and China.

9 INDUSTRY, INNOVATION AND INFRASTRUCTURE
 **4.2M** daily mall goers provided with free Wi-Fi access
2 Malls: SM Aura Premier and S Maison LEED® Gold Certified Buildings

8 DECENT WORK AND ECONOMIC GROWTH
 **1,704** Senior Citizens involved in the Community Service Program for Senior Citizens
5,572 Small and Medium Enterprises (SMEs) are doing business in the malls
236 interns hired
284 employees underwent OSHS/BOSH Training

14 LIFE BELOW WATER
 **7,000** participants collected **572,254.14 kgs** of waste during Coastal Clean-Up in SM By the Bay
100 participants collected **298 kgs** of trash during Hamilo Coast coastal and underwater clean up
3 Marine Protected Areas (MPAs) in Hamilo Coast regularly patrolled to prevent illegal fishing

15 LIFE ON LAND
 **139,924** various tree species planted by SM Supermalls employees in Cordillera Administrative Region (CAR), Central Luzon, and CALABARZON Regions
400 trees planted by SMDC employees at La Mesa Dam Ecopark
100 participants planted 200 propagules in Pico de Loro mangrove area

11 SUSTAINABLE CITIES AND COMMUNITIES
 **1,000** housing donated to Yolanda (Typhoon Haiyan) victims
600 PWD participated in Emergency Preparedness Forum
8 malls have disaster resilient features such as water catchment, built on stilts
 All SM Prime establishments with specially designed ramps and comfort rooms for PWDs and Senior Citizens

10 REDUCED INEQUALITIES
 **60%** female: 40% male employees
100% rank and file employees receiving minimum or above minimum wage
2,643 elderly recipients of Serve More Love for the Elderly Program
24,021 participated in Angels Walk for Autism
5,000 participated in Happy Walk for Down Syndrome

16 PEACE, JUSTICE AND STRONG INSTITUTIONS
 **0** reported cases of bribery and discrimination

17 PARTNERSHIPS FOR THE GOALS (102-12)
 Philippine secretariat of the UNISDR ARISE.
64 ARISE Philippine members
 SM Prime partners with various organizations:

- United Nations Children's Fund (UNICEF)
- World Wide Fund for Nature (WWF) Philippines
- National Resilience Council (NRC)
- UN Global Compact (UNGC)

Shell Social Investment

SciP SOCIAL INVESTMENT STRATEGY



SciP SI PORTFOLIO - FOCUS

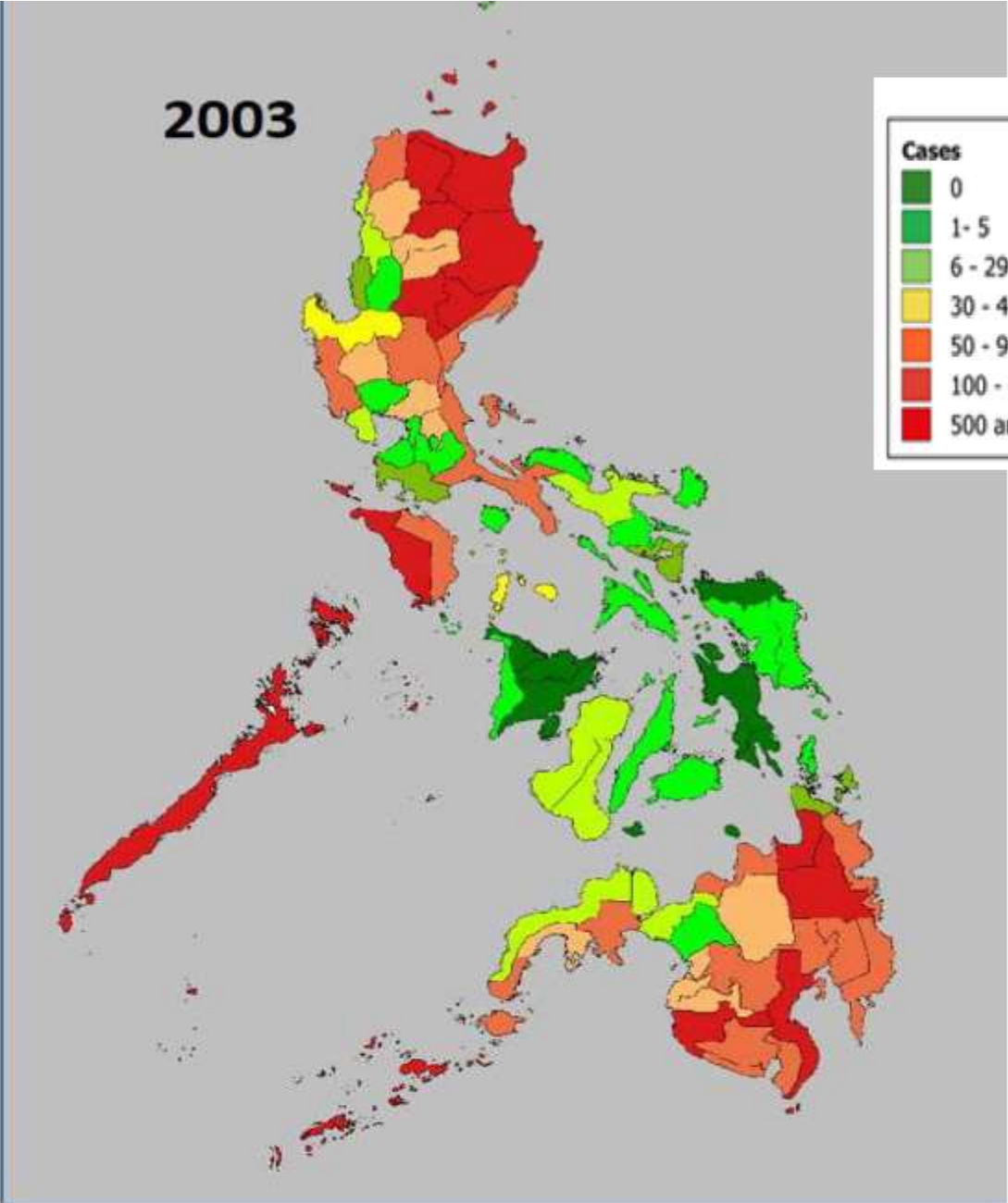


Copyright of Filipina Shell Foundation, Inc.

10 December 2019

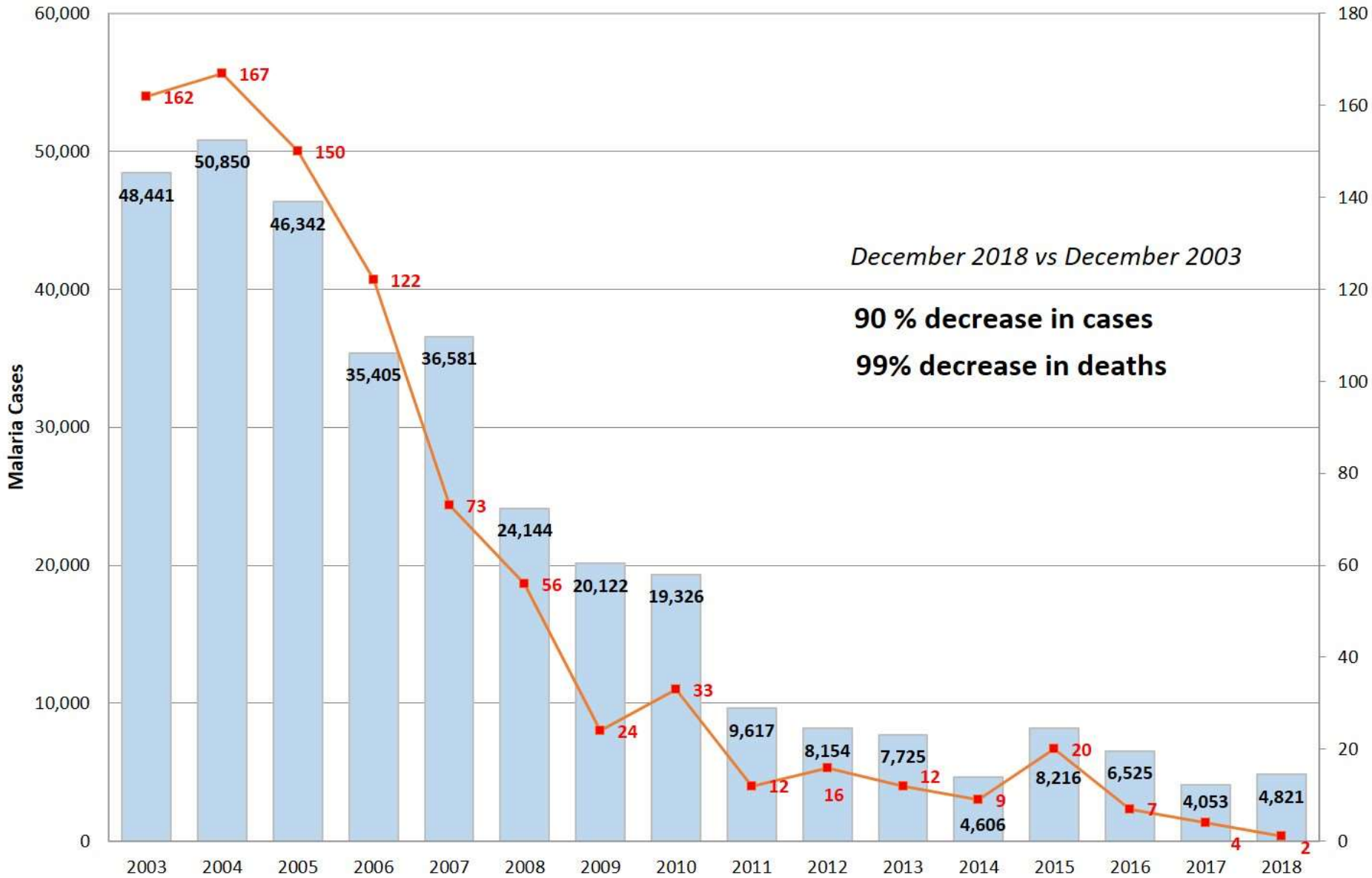


Country Impact (per Barangay)



Malaria Cases and Deaths

Philippines, 2003 to December 2018



Thank you