

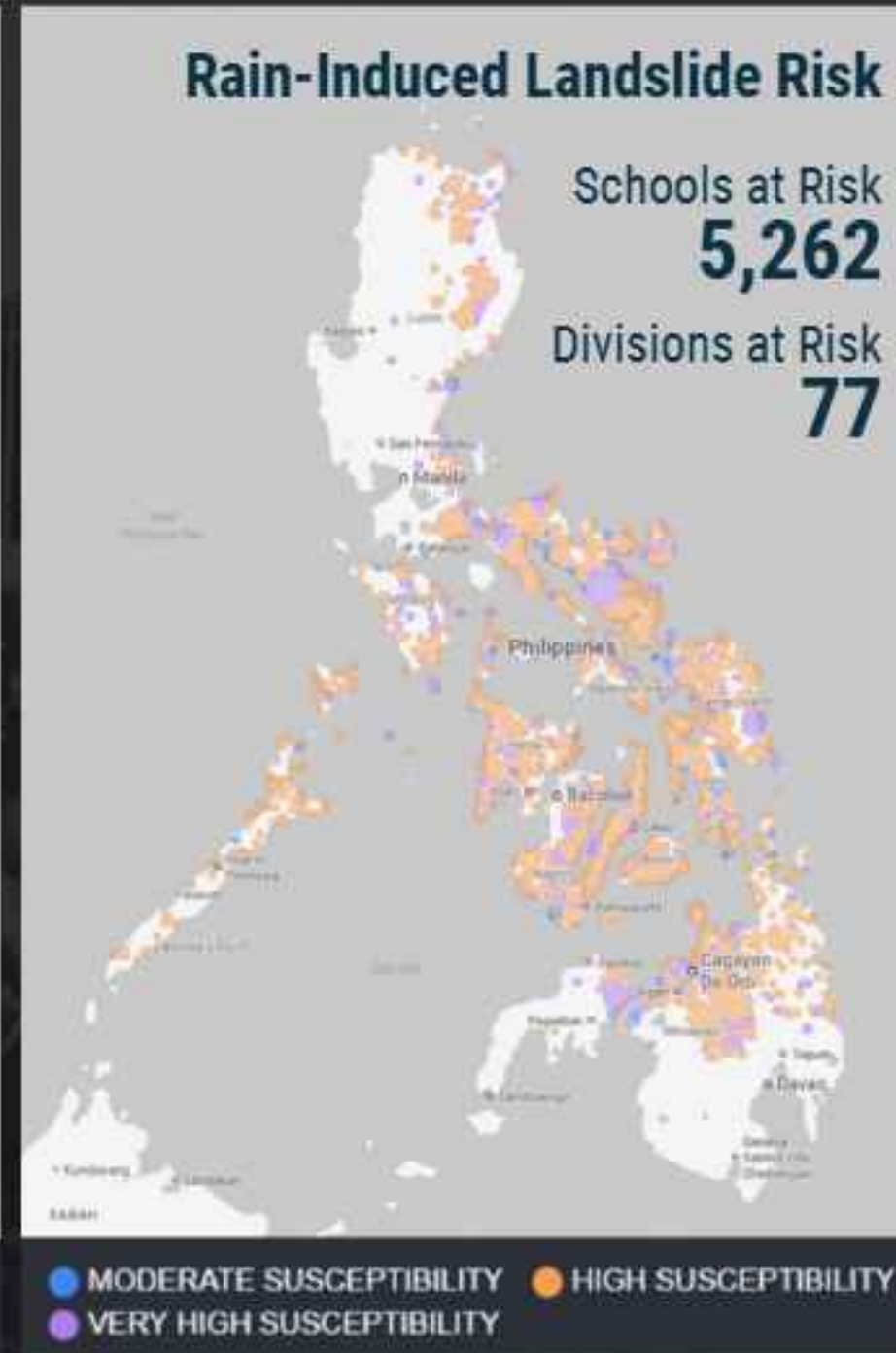
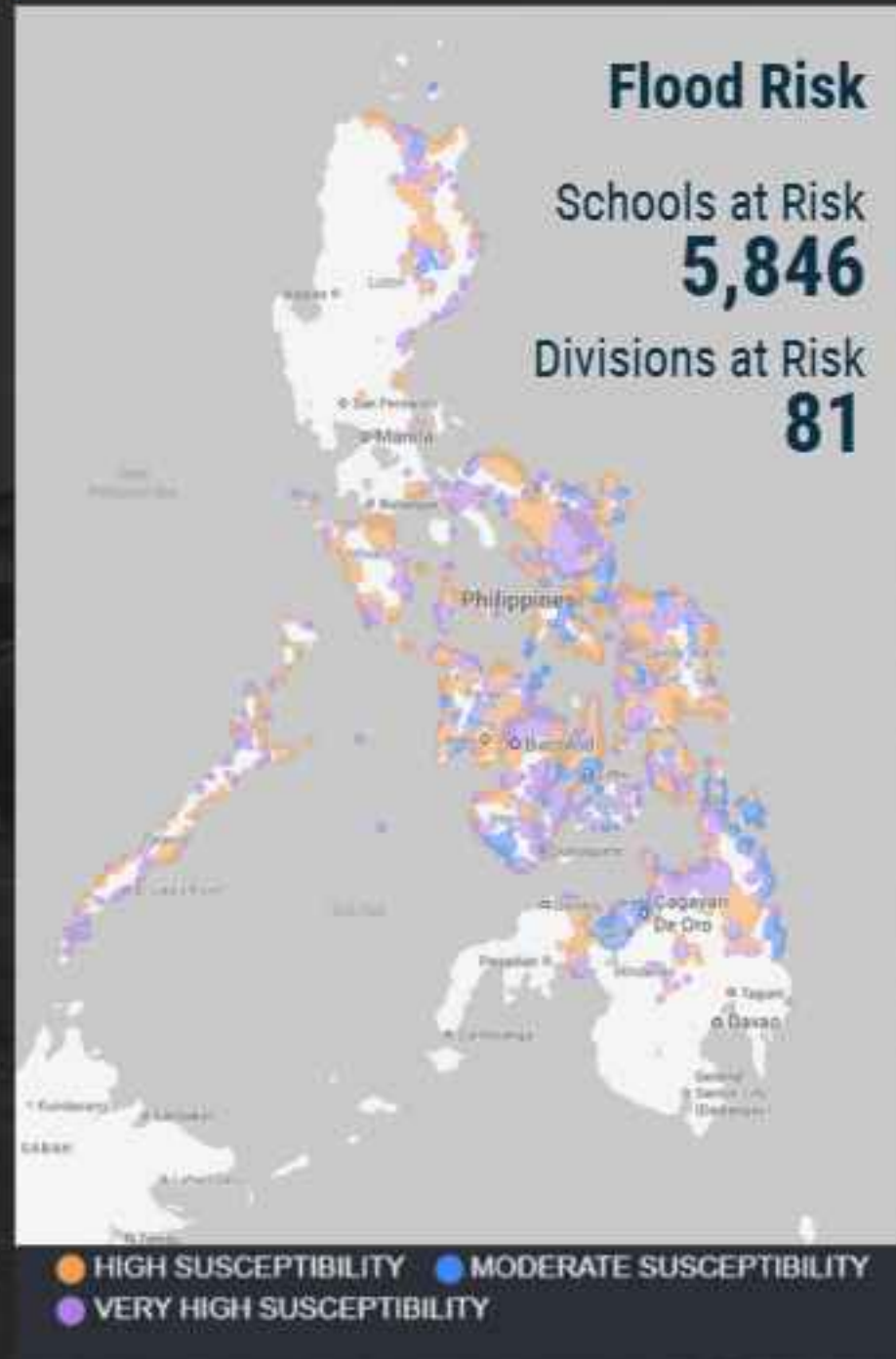
Education in Emergencies:

Keeping Learning Alive During Disasters

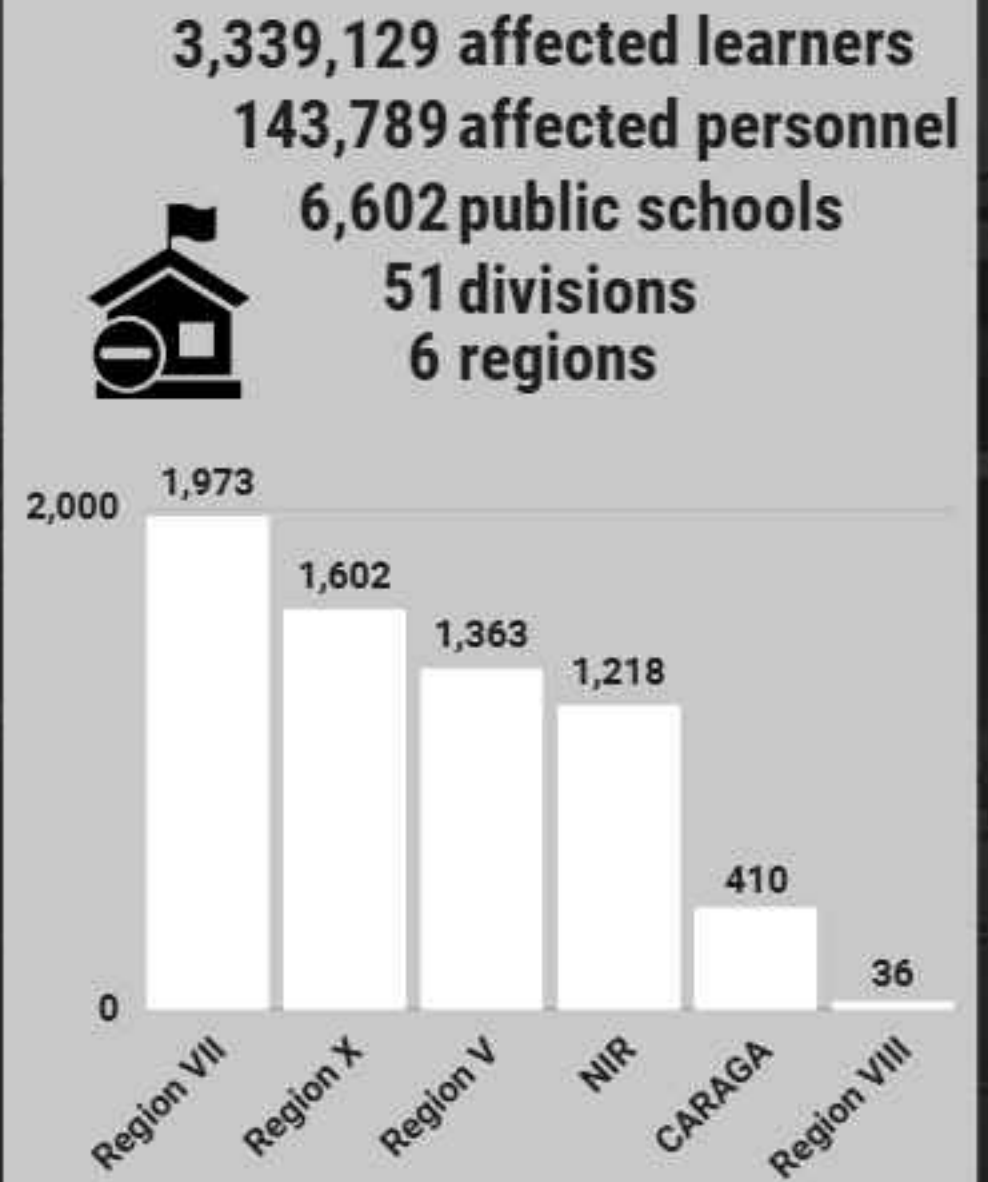


Hazards and Disasters Disrupt Learning in Schools

Heavy Rainfall Outlook (FRF 50-200 mm, Nov 25, 2025)



Declared Suspension of Classes



**“VERBENA”
and
Shearline**

The DepEd-DRRMS reiterates the following recommendations for affected School Division Offices and schools:

- Collaborate with local government units and disaster risk reduction and management councils to ensure emergency response preparedness, preventive class suspensions and shift to alternative delivery modalities, as applicable.
- Activate School Disaster Risk Reduction Management (SDRRM) teams and contingency plans to prepare for potential flooding, rain induced landslides and storm surges.
- Safeguard learning materials and equipment.
- Preposition emergency supplies and resources.

Affected Population

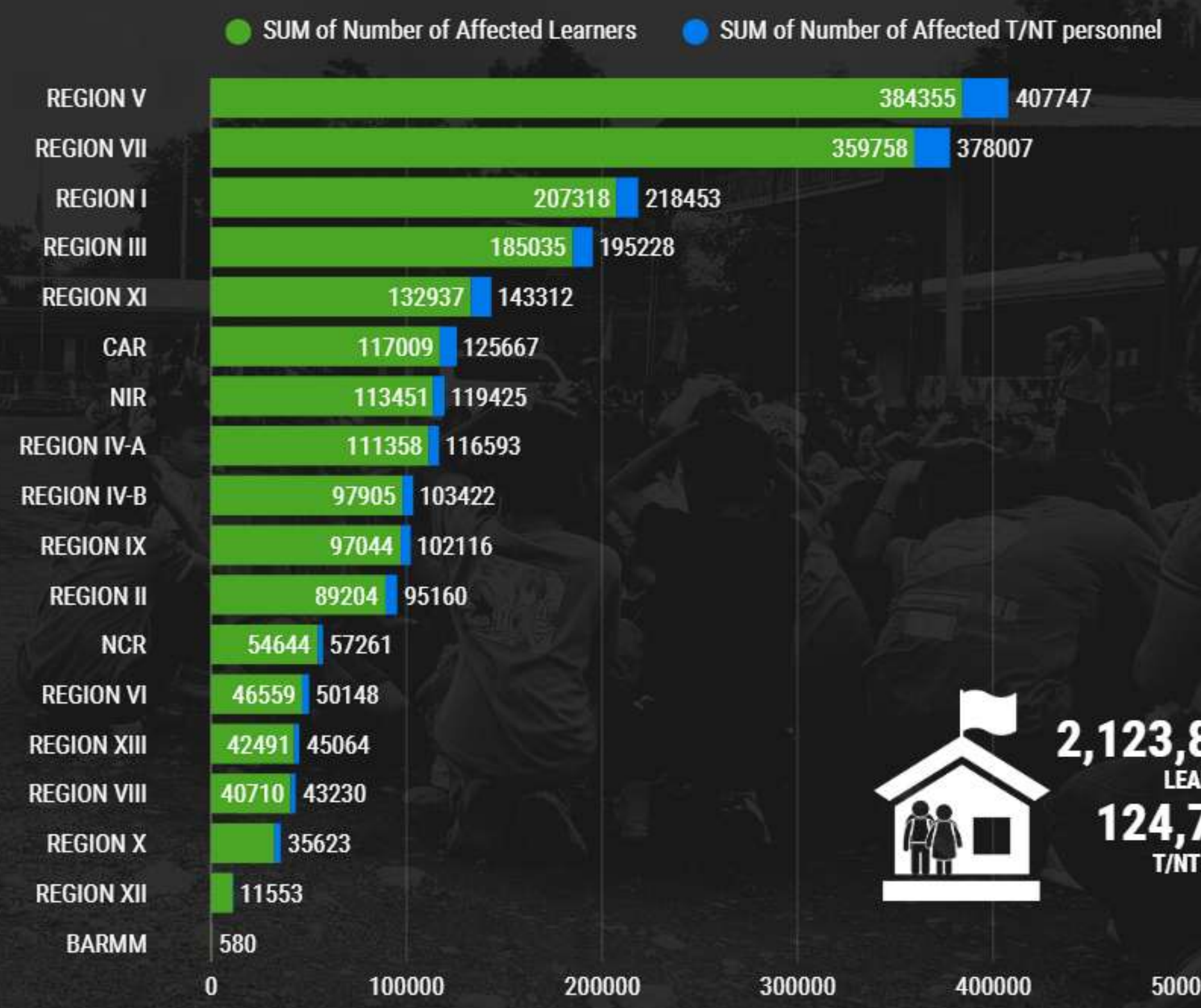
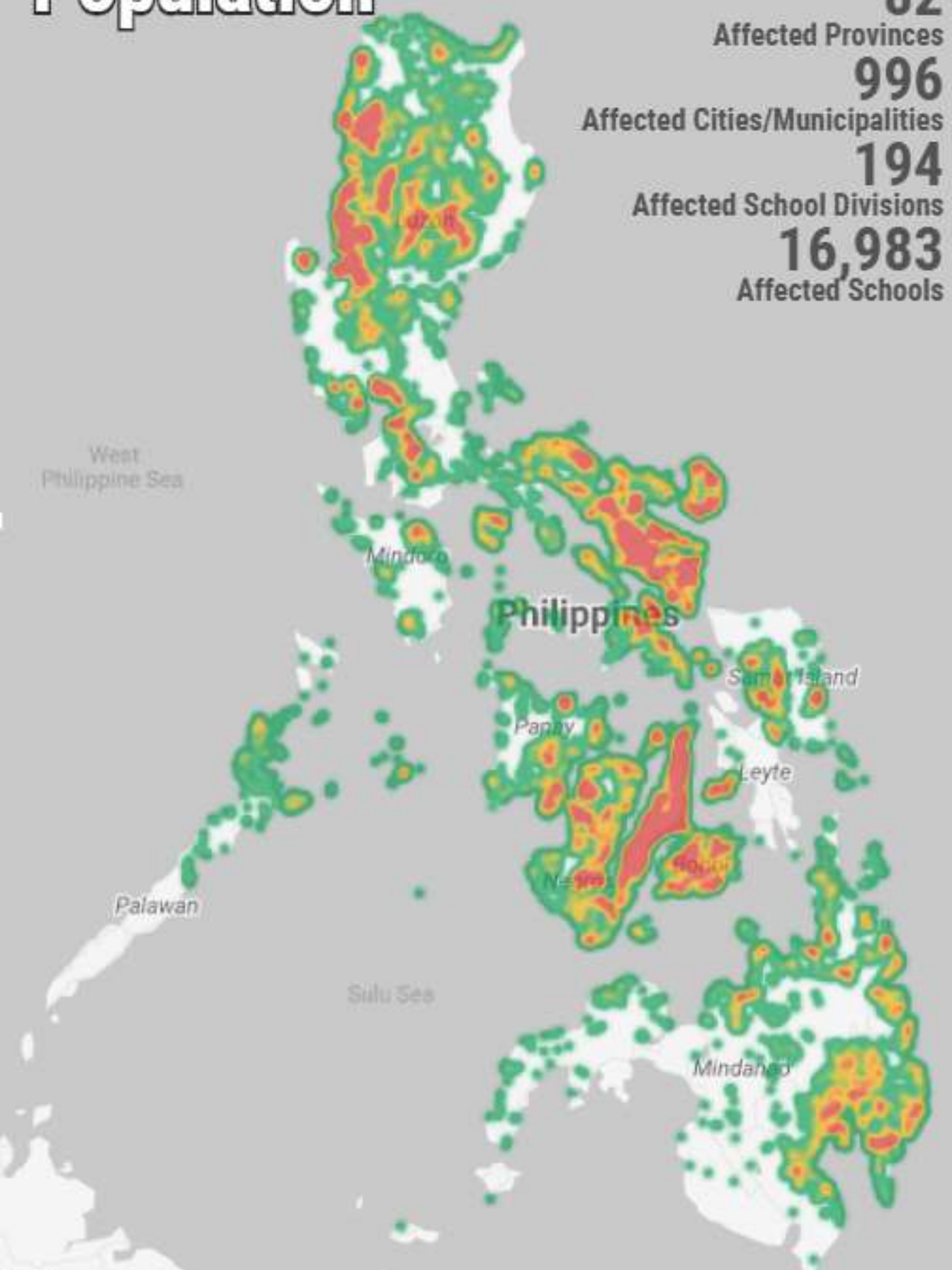
18
Affected Regions

82
Affected Provinces

996
Affected Cities/Municipalities

194
Affected School Divisions

16,983
Affected Schools

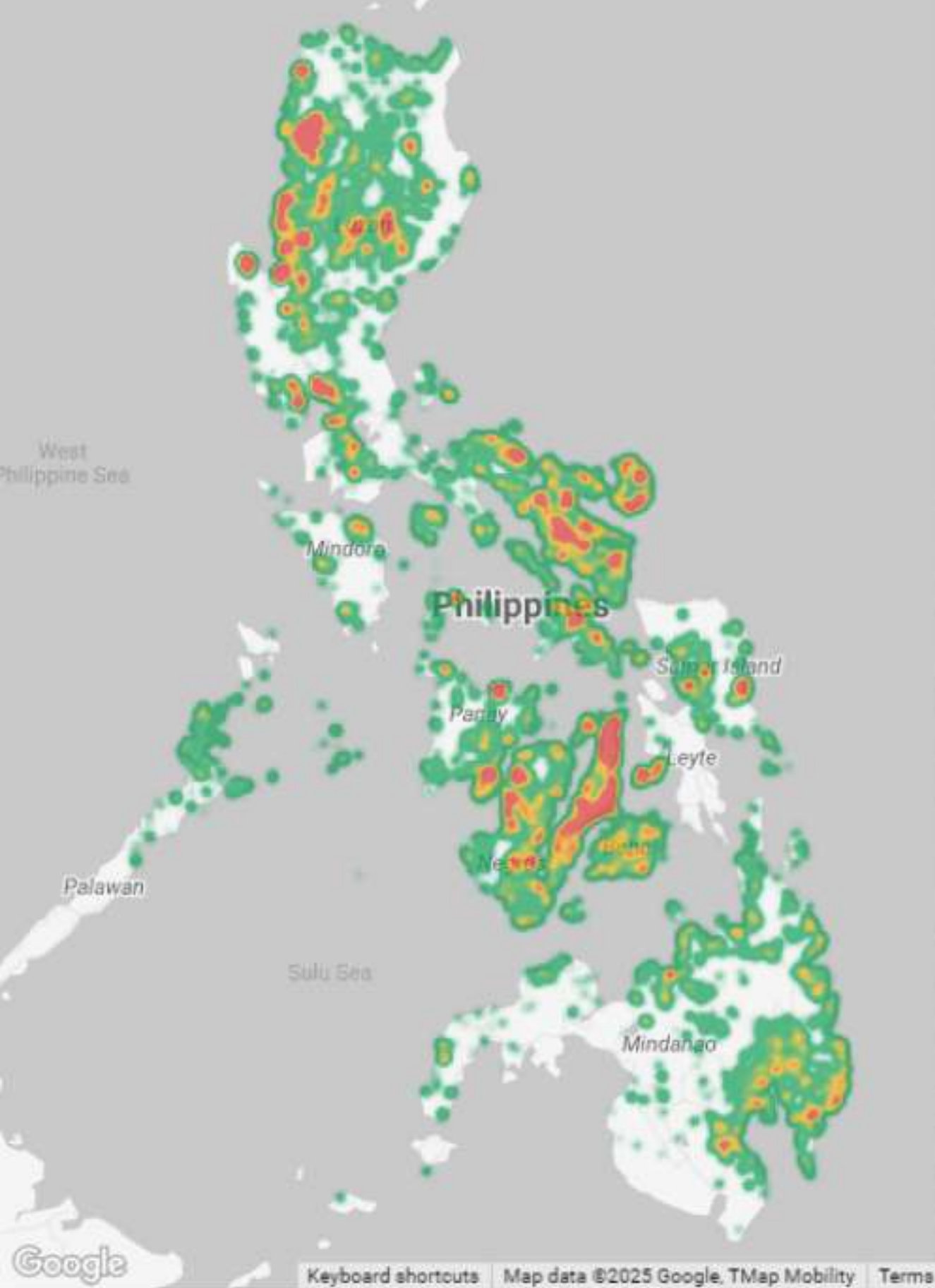


2,123,830
LEARNERS

124,759
T/NT STAFF



Disaster Losses



 13,355
Damaged Schools

 6,029
Damaged WASH Facilities

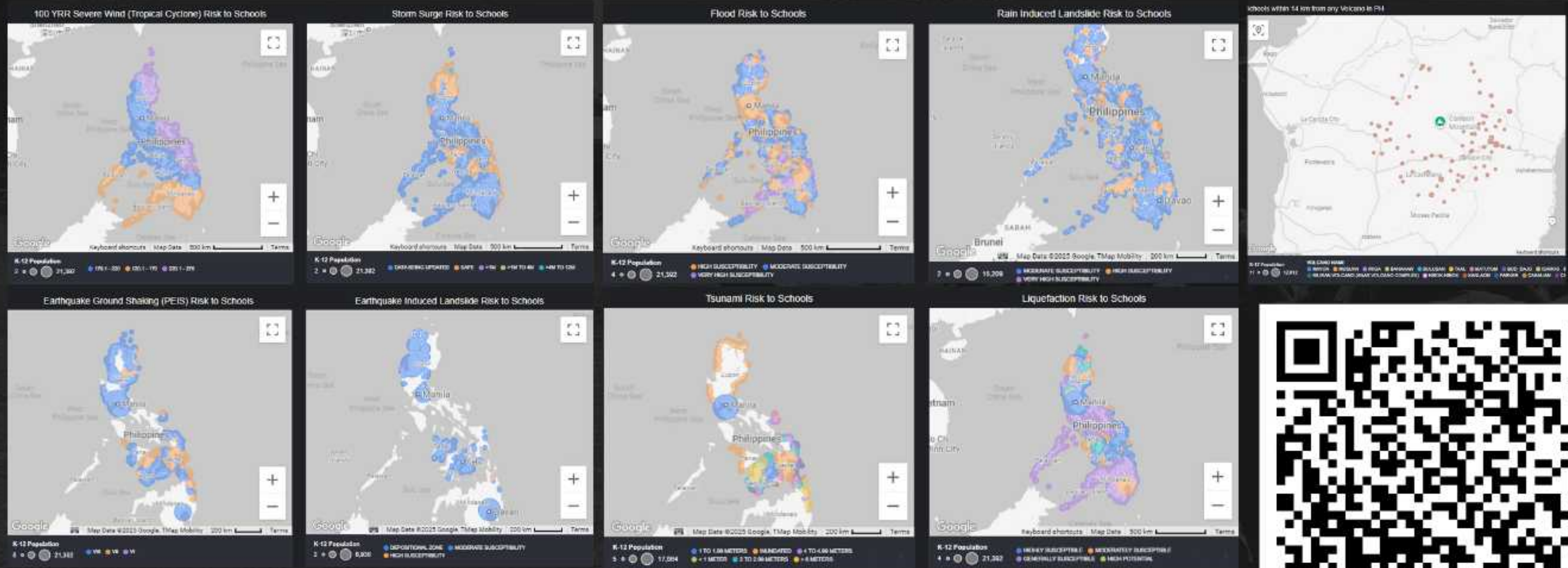
 156,128
Damaged Furniture

 822,820
Damaged Learning Materials

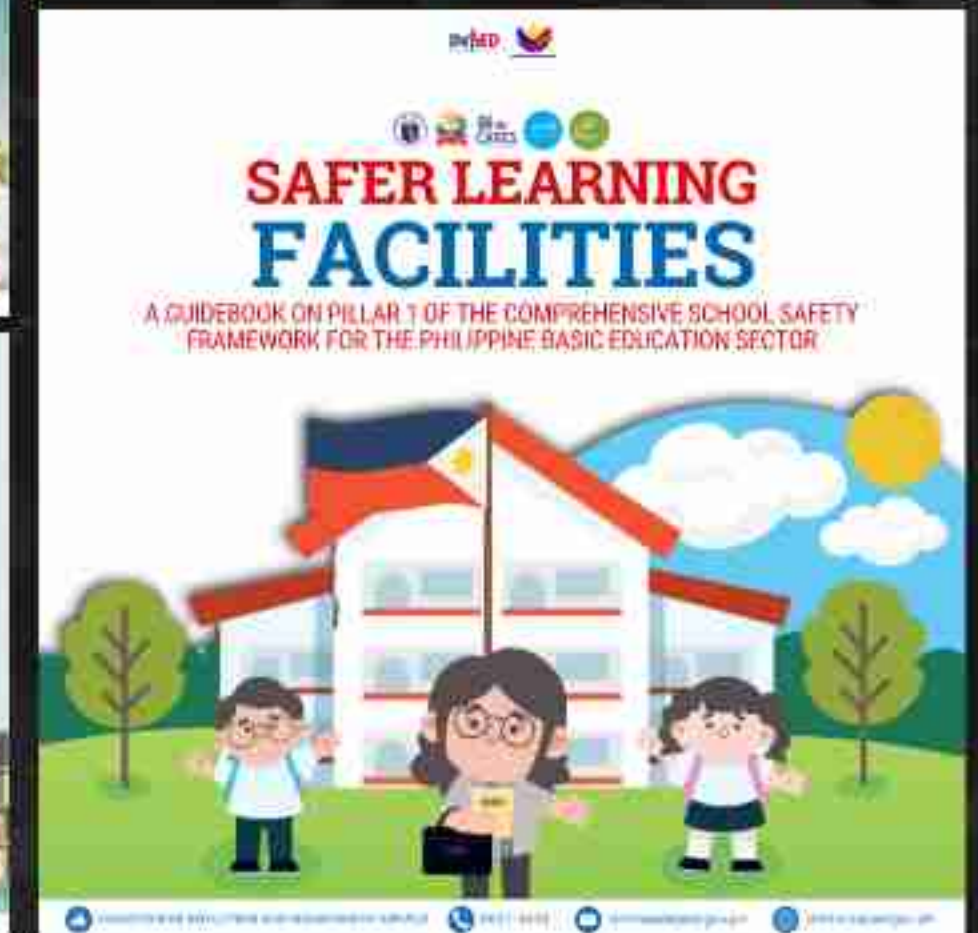
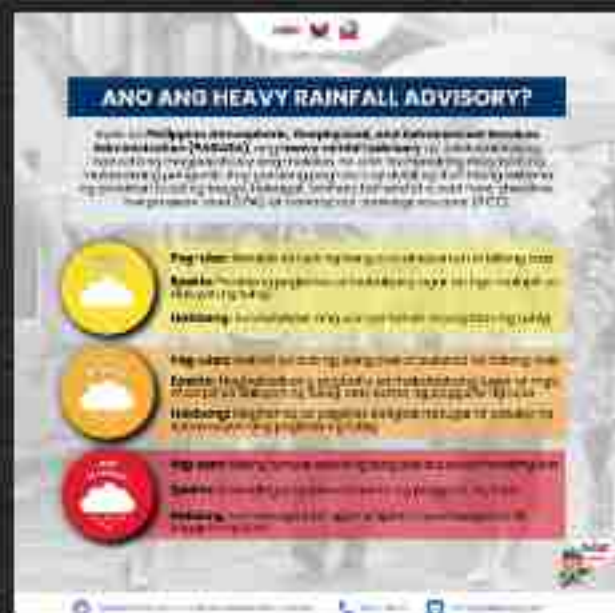
 17,395
Damaged IT Equipment



Awareness of Multi Hazard Risk to Schools



Awareness on Disaster Preparedness and Anticipatory Action



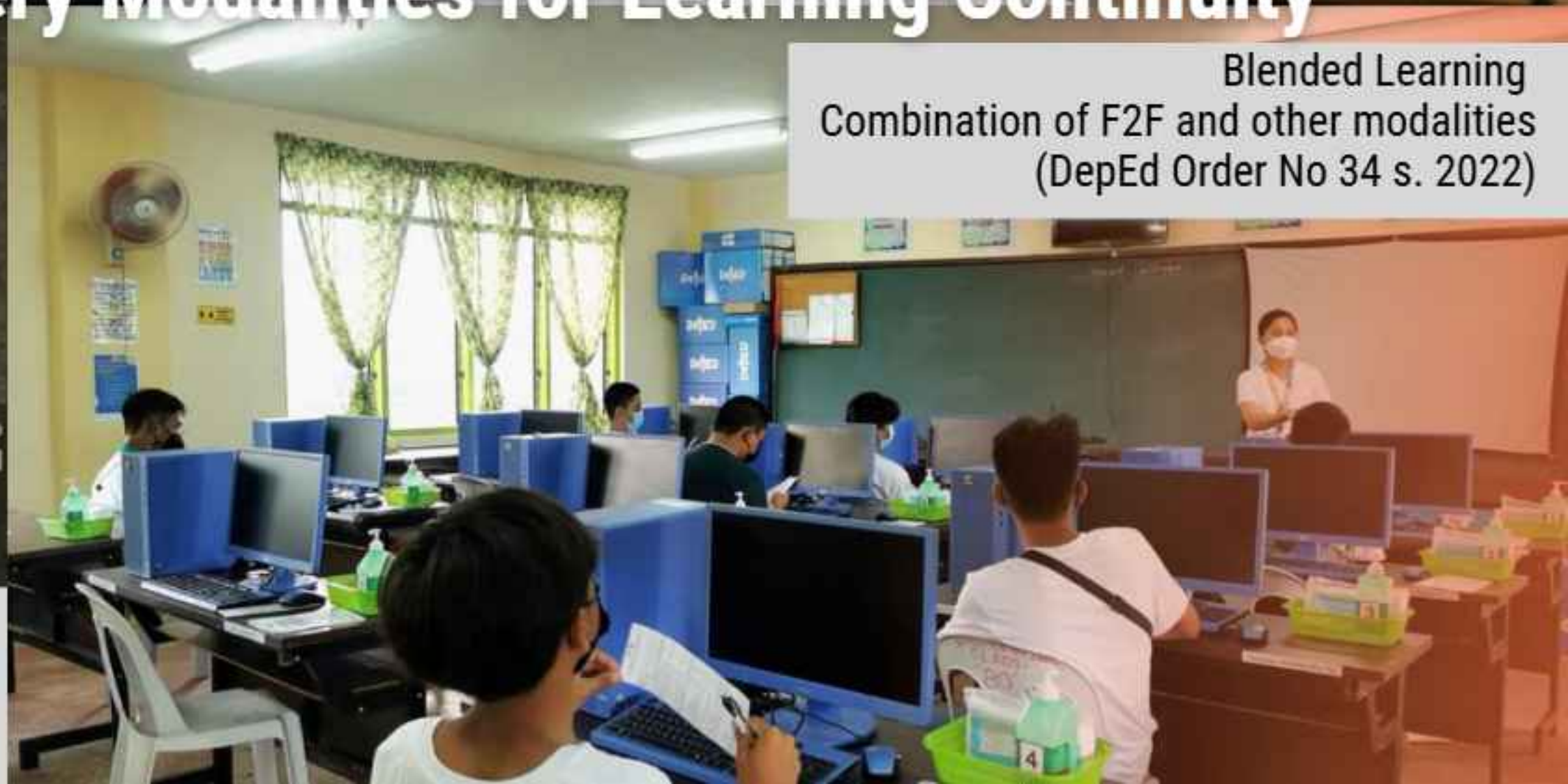


Alternative Delivery Modalities for Learning Continuity

Online Distance Learning (ODL)
Information Technology Assisted
(DepEd Order No 009, s. 2024)



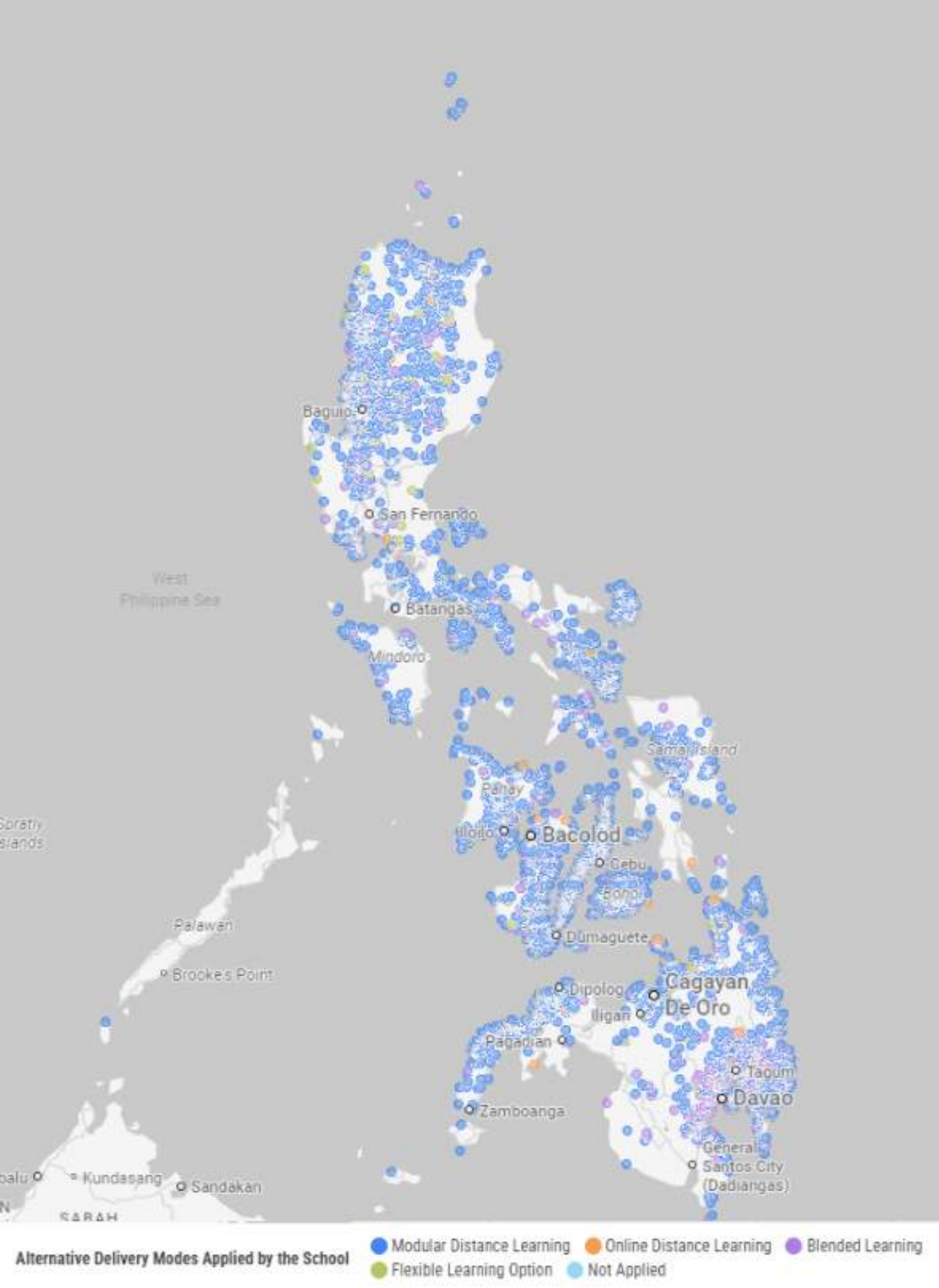
Blended Learning
Combination of F2F and other modalities
(DepEd Order No 34 s. 2022)



22HP+357, Bogo City, Cebu, Philippines 🇵🇭

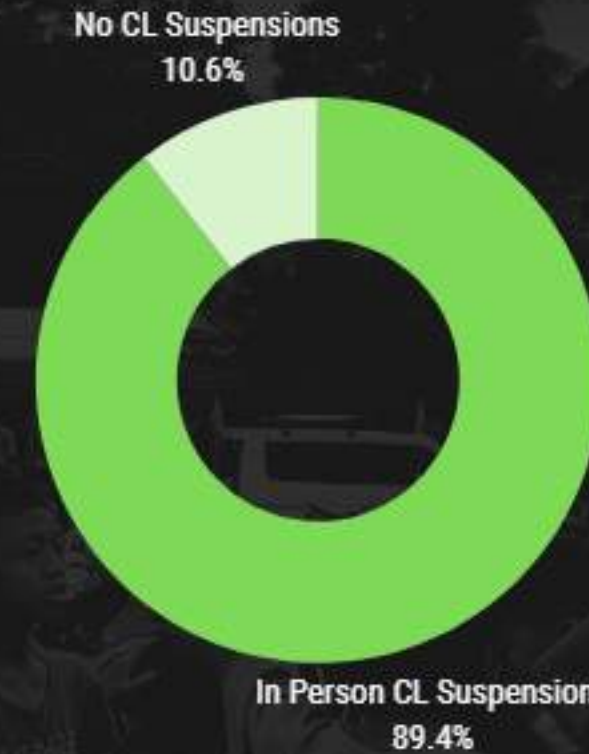
Latitude
11.027814999999999°
Local 11:30:36 AM
GMT 03:30:36 AM

Modular Distance Learning (MDL)
Self-directed learning
(DepEd Order No 009, s. 2024)



Disaster Response: Learning Continuity

9 of 10 schools suspended in-person classes due to hazards/disasters



25 Days

Average Learning Lost Days

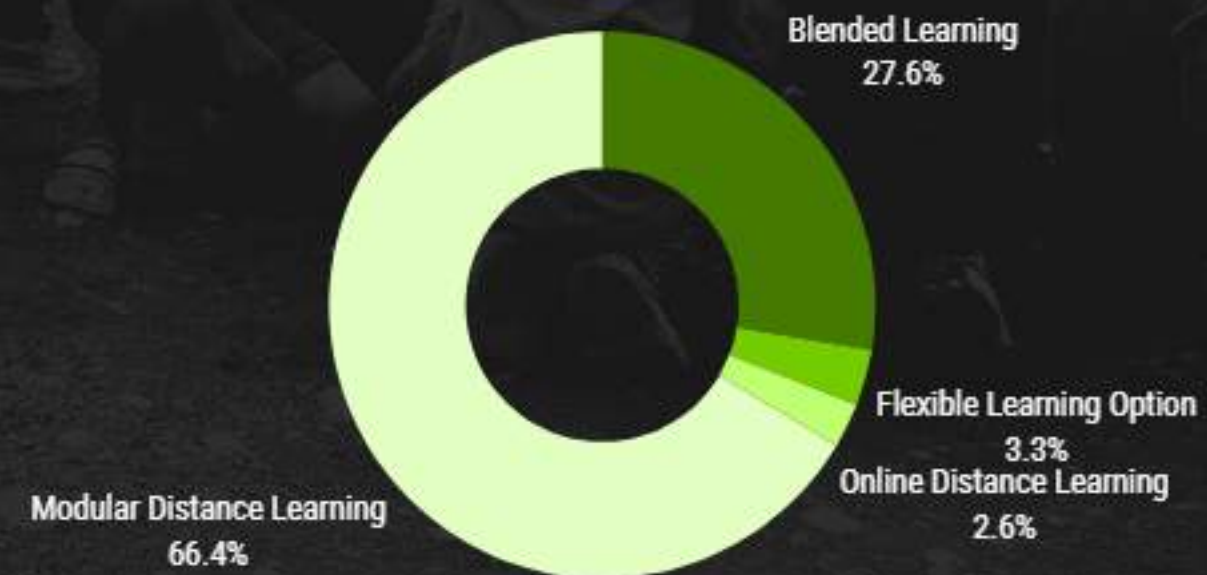
41 Days

Maximum Learning Lost Days

1 Days

Minimum Learning Lost Days

All schools that suspended classes utilized different alternative learning modalities



Learning Continuity Spaces



UPGRADED TEMPORARY LEARNING SPACE MK.2



UPGRADED TEMPORARY LEARNING SPACE MK.3 FOR FLOOD PRONE SCHOOLS

A prefabricated, modular temporary learning space constructed from durable steel and composite materials, designed for immediate and easy setup to ensure learning continuity following a disaster, while damaged classroom repairs are in progress.

- Complete TLS package includes WASH, learning kits, school furniture, and emergency power and telecommunications
 - Duration of Installation: 3-14 days
- Cost: ₱1.506 million

Scan and download the Pillar 1
Guidebook and TLS Design





UPGRADED TEMPORARY LEARNING SPACE MK.2



INCLUSIVE WASH FACILITIES

SYSTEM COMPONENTS



LEARNING AND TEACHING KITS (EDUKAHON)



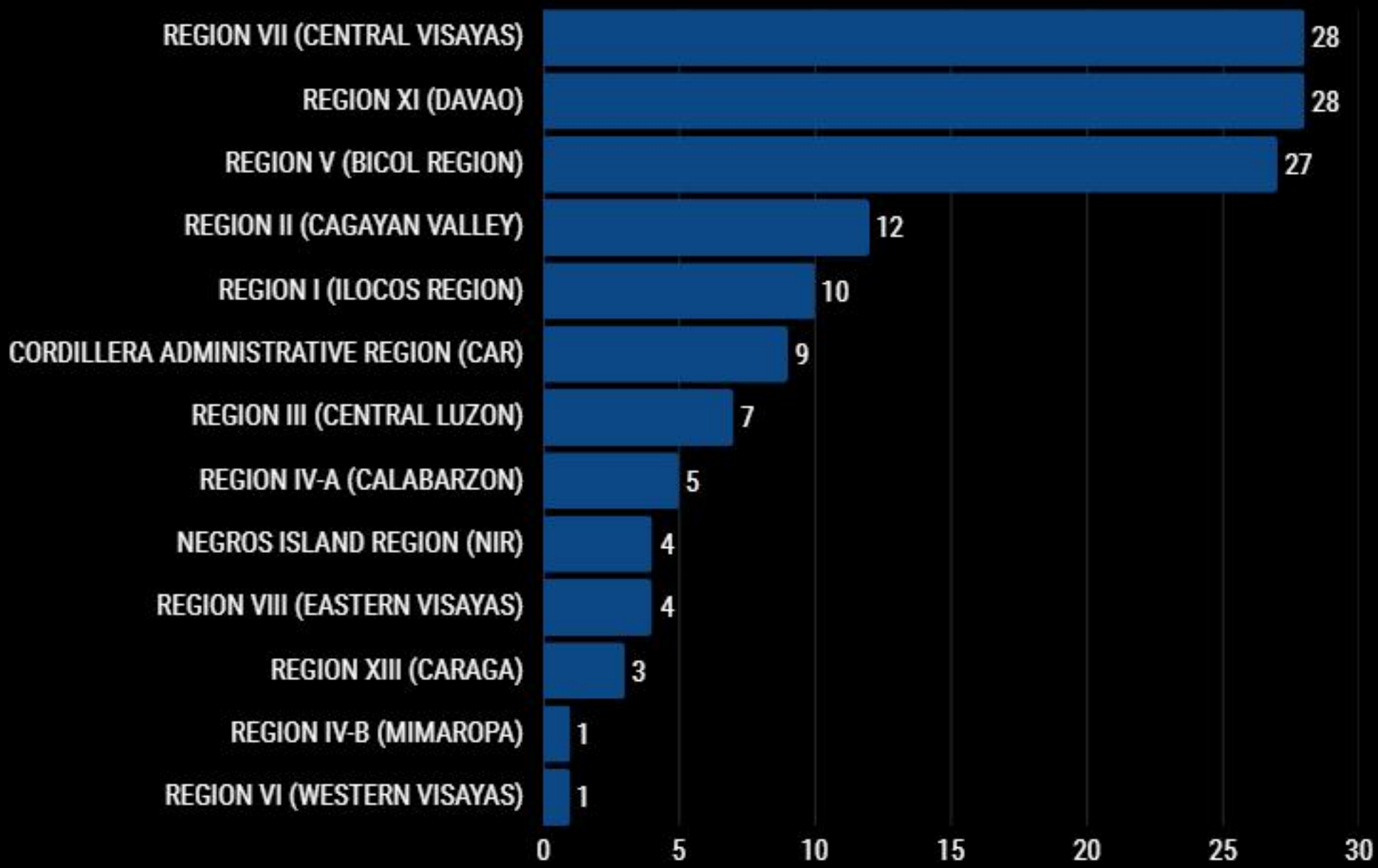
OFF GRID POWER AND EMERGENCY COMMUNICATIONS

STATUS



139 Upgraded TLS allocated to damaged elementary schools in 13 Regions affected by HydroMet and Earthquake Disasters in 2025 using DepEd DPRP Funds

- Emergency Procurement in process



Secured additional funding to deploy 1,380 Upgraded TLS to cover other damaged elementary schools in 2026

We are stronger when we work together

On October 17, 2007, the DepEd institutionalized the Cluster Approach in Humanitarian Response to address emergencies caused by disasters. Key objectives include:

- Facilitating discussions on education-related issues in affected areas.
- Raising awareness and support for educational needs.
- Coordinating resource management and tracking for emergency education responses.

Areas of Collaboration

Integration of DRRM x Climate Action in ALL levels of Education

Disaster Mitigation and Prevention

Disaster Preparedness

Disaster Response and Early Recovery

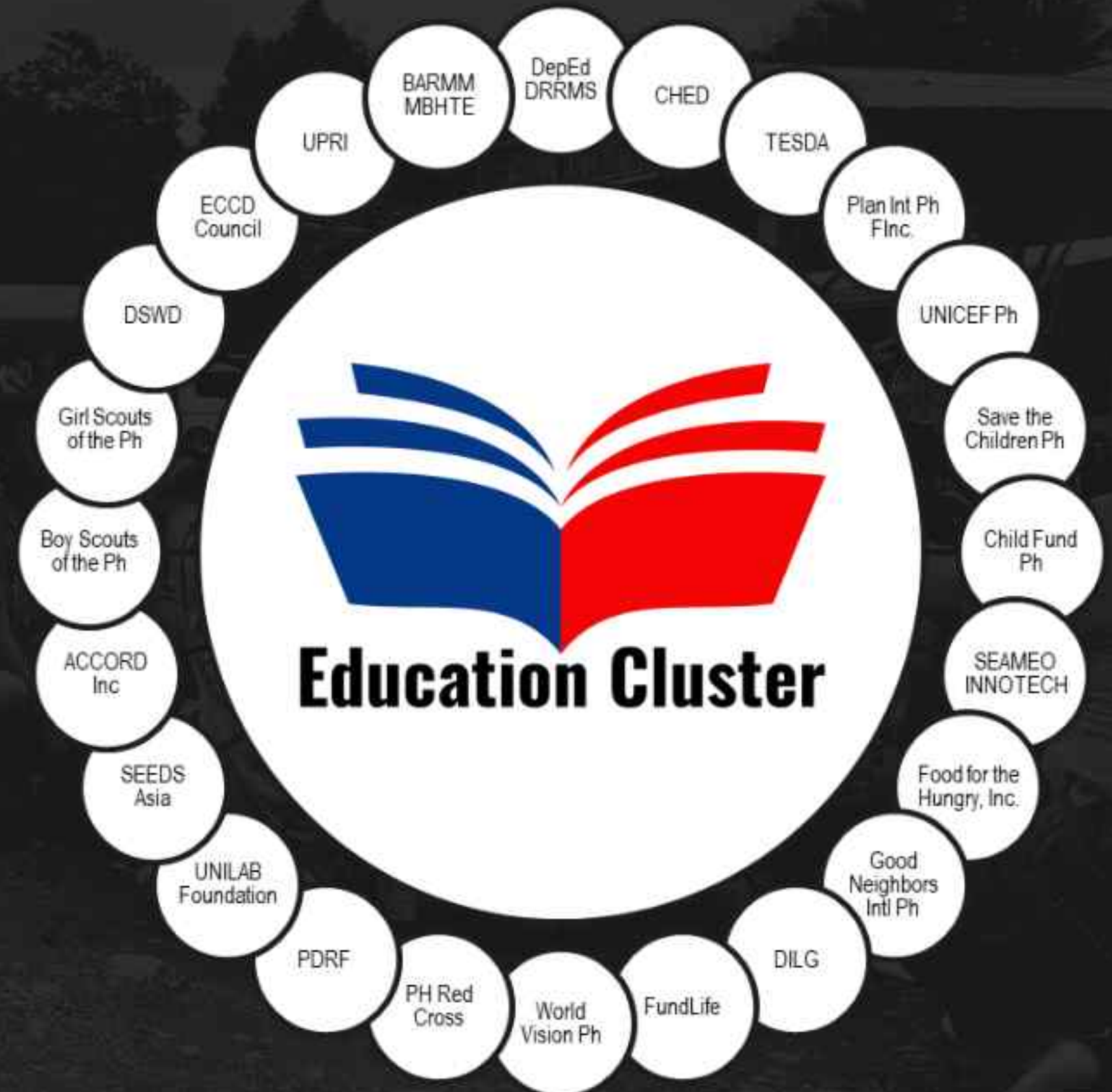
Disaster Recovery and Rehabilitation

Comprehensive School Safety

Educational Resilience and Learning Continuity

Capacity Refresh and Continuing Education for Teachers

Information Sharing



Our Strategy

MULTI HAZARD RISK AWARENESS - INFUSED IN ALL SCIENCE SUBJECTS ACROSS K-12

PREVENTION AND MITIGATION

- Refer to Safer Learning Facilities Guidebook online for effective guidance to all schools official and Local Chief Executives
- Carry out regular infrastructure audits and implement structural enhancements in all public schools, particularly those situated in multi hazards risk schools

PREPAREDNESS AND ANTICIPATORY ACTION

- Enhance disaster preparedness for learner families and schools.
- Enhance Public Service Continuity Plans and Contingency Plans for schools and allocate school MOOE to support the plan.
- Preposition funds and supplies for cleanup, clearing, minor repairs, and TLS

RESPONSE AND EARLY RECOVERY

- Work with the community to establish DepEd Agile Response Teams (DART) for schools
- Access Quick Response Funds (QRF) for immediate response augmentation to affected schools

RECOVERY AND REHABILITATION

- Expand the collaboration with all governance stakeholders (NDRRMC, LGU, Education Cluster, Private Sector, Civil Society and Local Community Organizations) on a **Brigada Eskwela** model for immediate repair and reconstruction of damaged learning facilities



**Let's collaborate to ensure
Future Ready and Resilient
Filipinos**

