



CATALYZING THE ROLE OF THE PRIVATE SECTOR IN CLIMATE CHANGE

VERONICA T. GABALDON
EXECUTIVE DIRECTOR
PHILIPPINE DISASTER RESILIENCE FOUNDATION





The Philippine Disaster Resilience Foundation (PDRF) is the **Philippines' major private sector vehicle and coordinator for disaster resilience**. As an alliance of businesses dedicated to building the disaster management capabilities of the private sector in the country, it works on all areas: prevention and mitigation, preparedness, response, and rehabilitation and recovery.

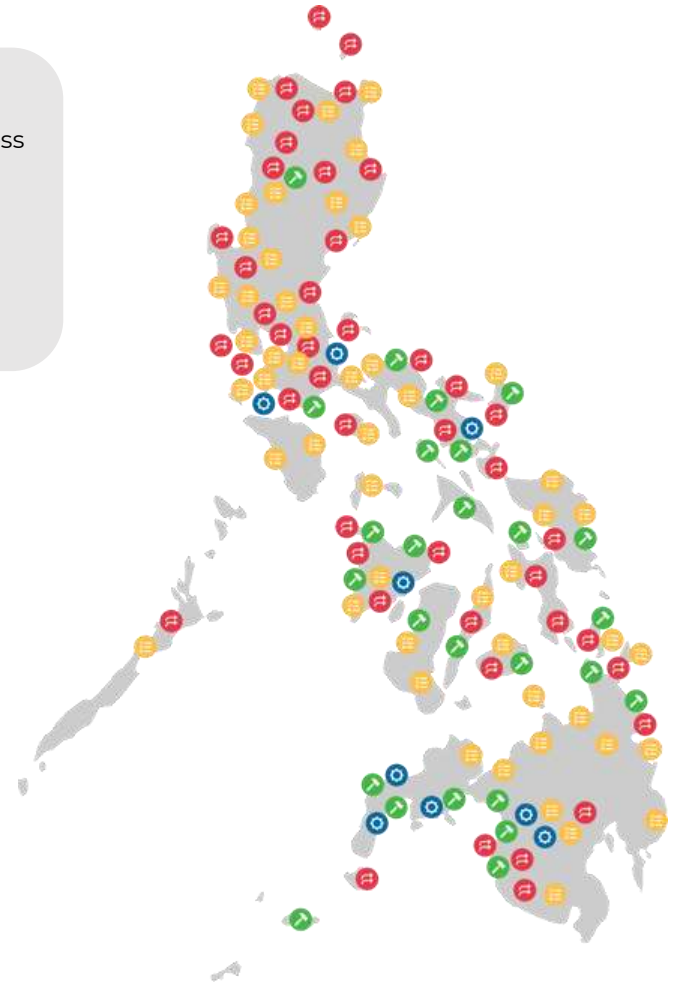


OUR WORK

PDRF's programs and initiatives cover all four pillars of disaster risk reduction and management. By continuously working with the business sector, the humanitarian sector, international organizations, non-government entities, and government agencies, PDRF strengthens the disaster resilience of communities and businesses across the country.

LEGEND:

-  Preparedness
-  Mitigation
-  Response
-  Recovery



PDRF MILESTONES



2009
Typhoon Ketsana (Tropical Storm Ondoy)

2010 Philippine Disaster Recovery Foundation was established to harness private sector resources to help affected communities

2013
Typhoon Haiyan (Super Typhoon Yolanda)

2015
PDRF's name was formally changed to **Philippine Disaster Resilience Foundation** to highlight all pillars of disaster risk reduction and management

2016
Prototype EOC and building coordination mechanisms

2017
Establishment of Capacity Development and Business Continuity Programs

2018
PDRF's Emergency Operations Center, the first private sector-led national emergency operations center in the world, was established

2025
PDRF's EOC acts as the mother EOC of the private sector

PDRF EMERGENCY OPERATIONS CENTER

PDRF operates its own **Emergency Operations Center (EOC)**, the first private sector-led national operations center in the Asia-Pacific Region. Located in the Clark, Pampanga, the PDRF EOC uses advanced communication software and technology to monitor climate-related and natural hazards, provide alerts and updates to the PDRF network, and coordinate relief and response efforts.



PDRF CLUSTER SYSTEM

**STAKEHOLDER
MANAGEMENT**

**EMERGENCY OPERATIONS
CENTER**

**MEMBER
COMPANIES**

**NETWORK OF BUSINESS &
PARTNER AGENCIES**



INFRASTRUCTURE



LOGISTICS



TELCO



**WATER &
SANITATION**



**POWER, FUEL,
& ENERGY**



**FOOD &
NON-FOOD**



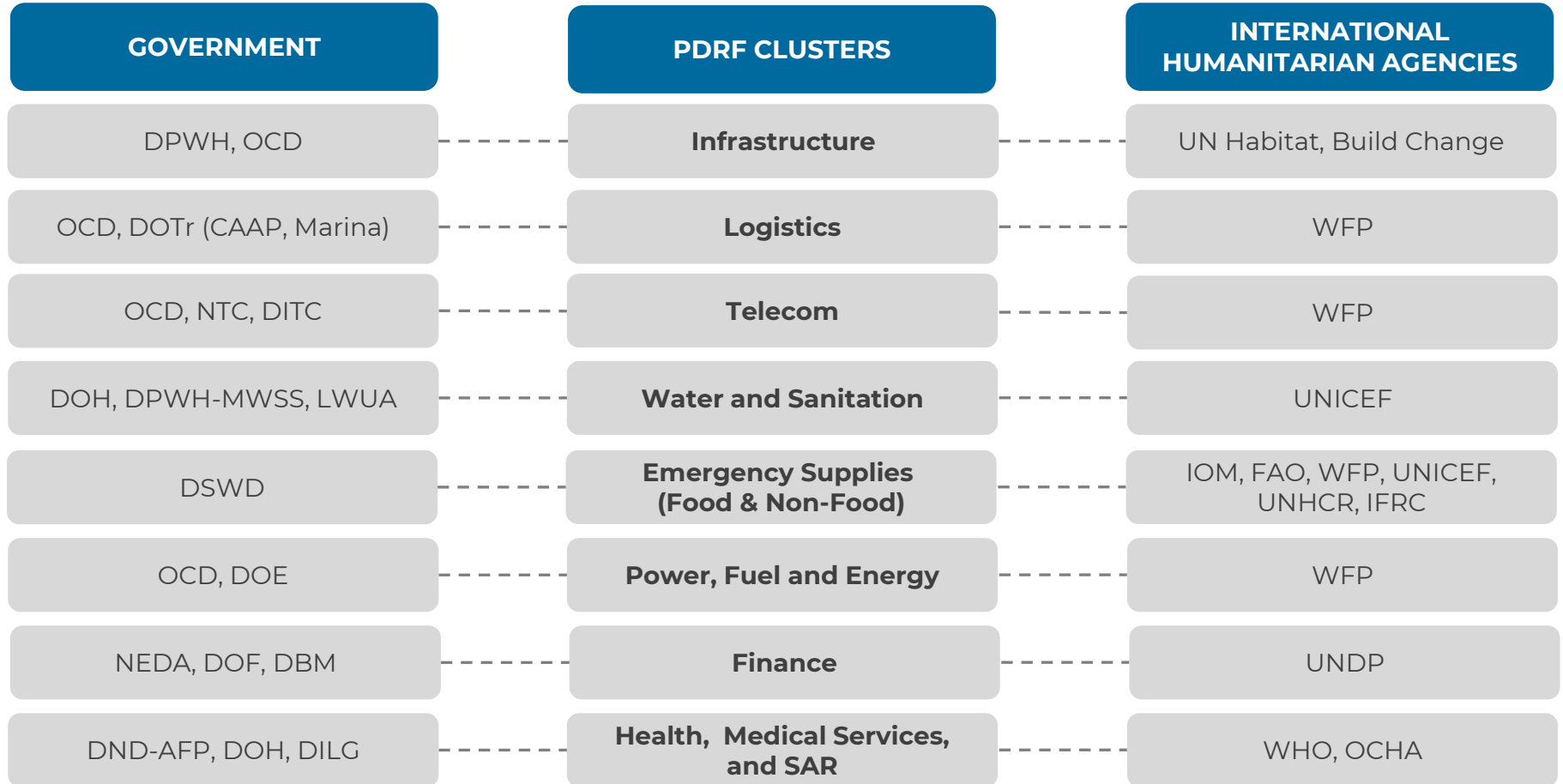
**FINANCE &
INSURANCE**



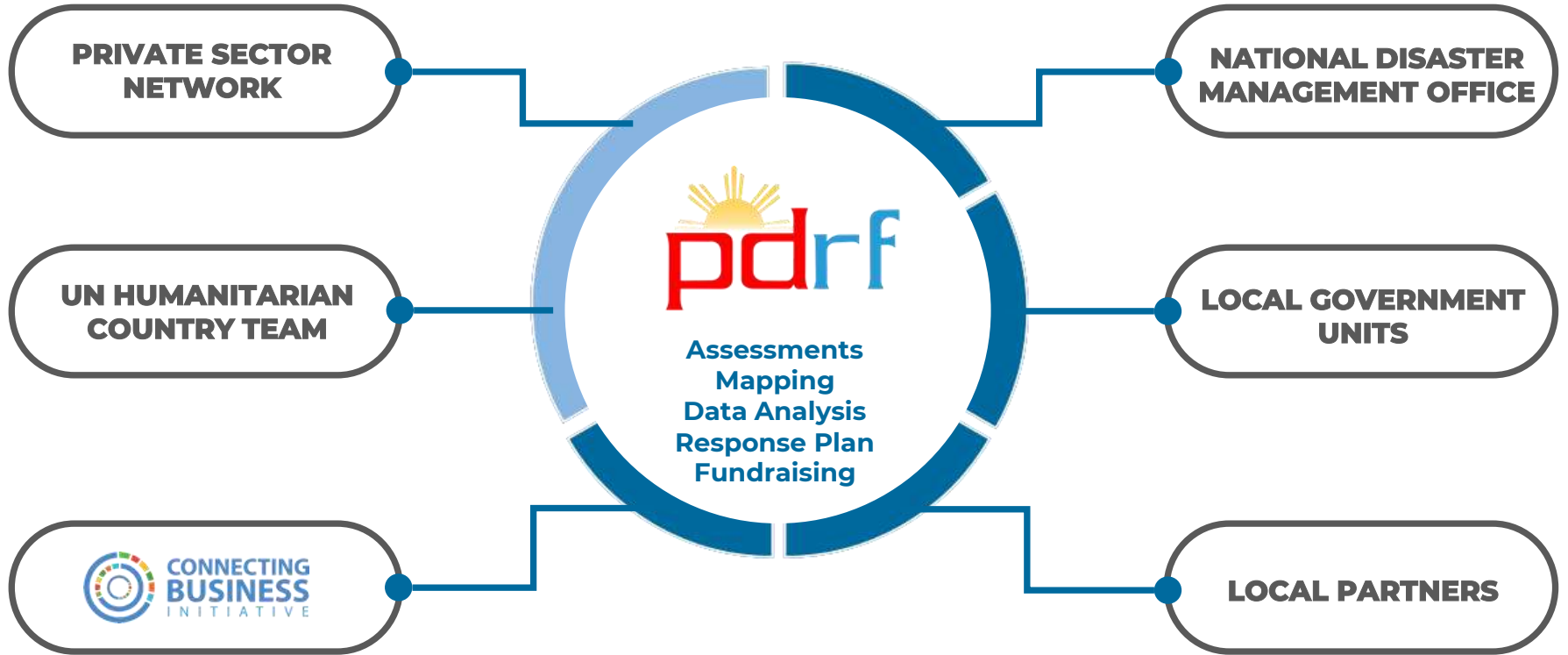
**SEARCH &
RESCUE/MEDICAL**

THE CLUSTER APPROACH

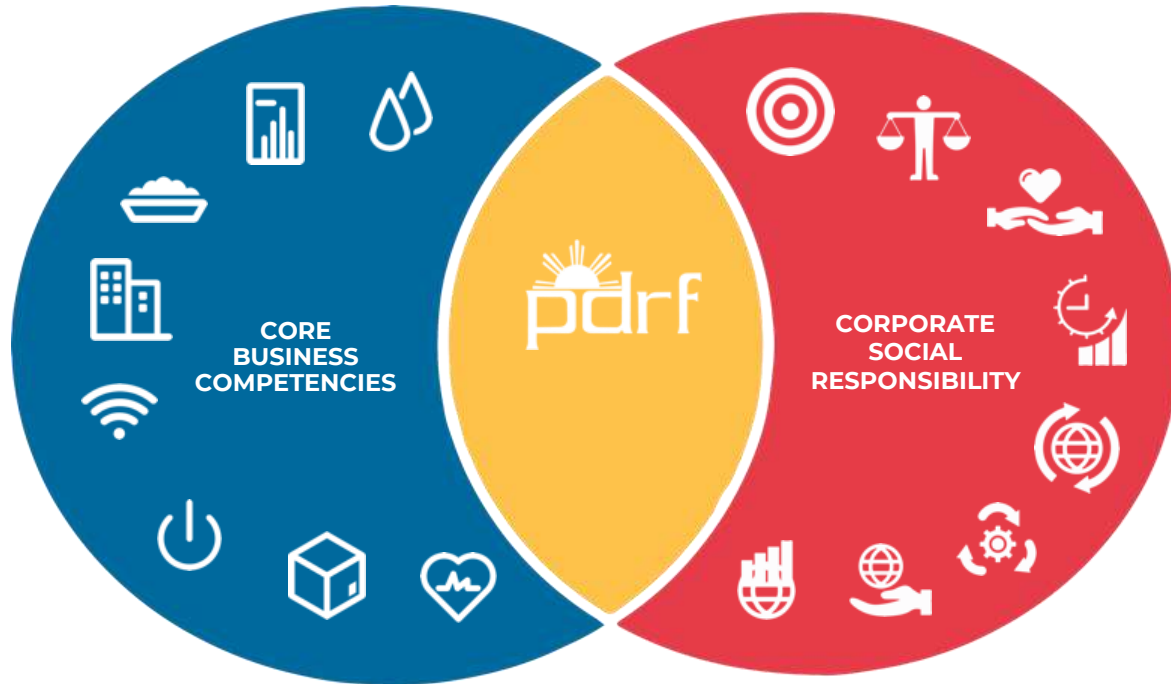
Interoperability with the Philippine Government and International Humanitarian Agencies



STRONGER COLLABORATION AND COORDINATION



LEVERAGING CORE BUSINESS COMPETENCIES AND CSR TO STRENGTHEN DISASTER RESILIENCE AND SPUR CLIMATE CHANGE ADAPTATION



PRIVATE SECTOR RESPONSE



SUSTAINABLE INITIATIVES

REVIVING
LOCAL ECONOMY



SUSTAINABLE
LIVELIHOOD


WATER
SECURITY



Australian Government
Department of Foreign Affairs and Trade



LUTHERAN WORLD RELIEF



Distribution of grocery cash vouchers to lockdown-affected areas

14 M

Individuals served

USD 30.5 M

Total amount raised



Provision of PPEs and other medical equipment to hospitals and institutions

USD 933,000

Cash donations

USD 1.8 M


Worth of in-kind donations



Capacity-building activities for medical frontliners

2,103

Healthcare workers engaged




Provision of temporary shelter to medical frontliners

926

Frontliners supported



Logistics support to deliver PPEs and medical-grade fabric



Delivery of RTE meals to frontliners

12,001

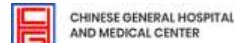
RTE meals served

96

Hospitals and facilities served

TASKFORCE T3

TEST • TRACE • TREAT



INNOVATIONS FOR DISASTER RISK REDUCTION

From a 2019 Case Study entitled "30 Innovation for Disaster Risk Reduction conducted and published by a team from the International Institute at Tohoku University, Keio University, the University of Tokyo, the United Nations University Institute for the Advanced Study of Sustainability, and Church World Service Japan in collaboration with the Association of Pacific Rim Universities Multi-Hazards Program.

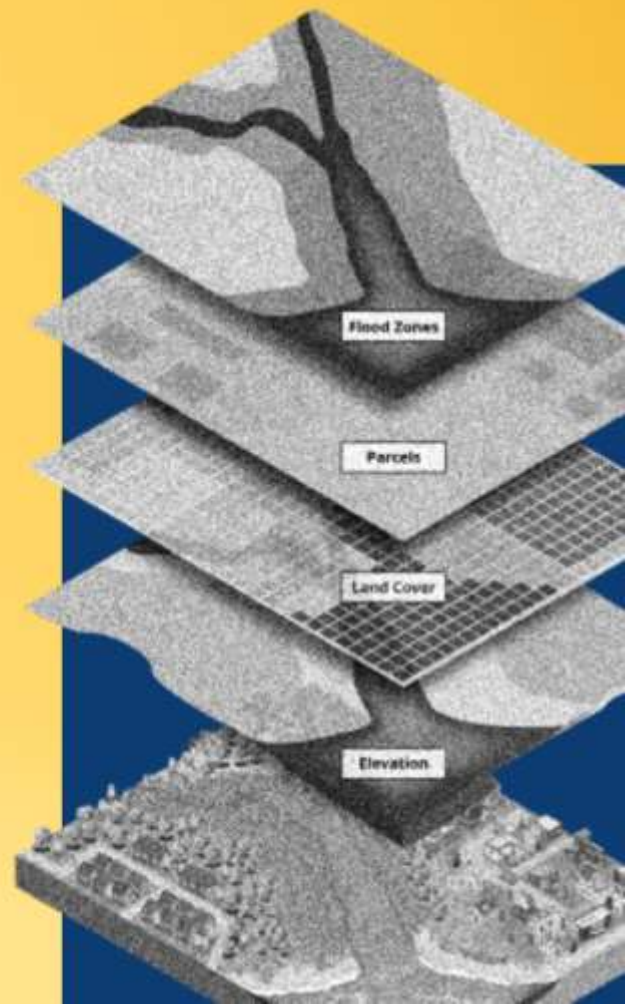


PRODUCT

GEOGRAPHIC INFORMATION SYSTEM (GIS)

GIS has become the fundamental information system for any disaster-related database at the local, national, and regional levels. This has significantly changed the concept of mapping and is now considered the basic mapping tool for many purposes.

As part of the Climate Resilience Cities Project, PDRF conducts GIS training to strengthen the local government's capacity to formulate maps and process data that will contribute to mitigating disasters and hazards and enhance their city plans in adapting to climate change.



EARLY WARNING SYSTEMS

Earthquake early warning systems (EWS) are considered a significant innovation in disaster risk reduction because they minimize major accidents and save lives. For an EWS to be effective, it should be fully automated, quick, reliable, small, independent, easy to connect network, and accurate.

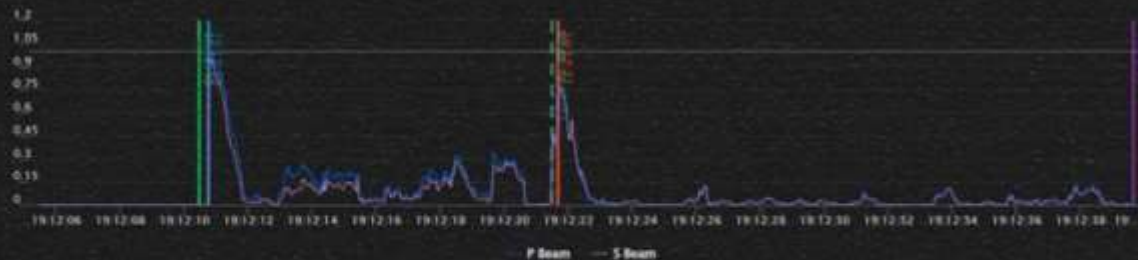
PDRF, in partnership with Seismic AI and PHIVOLCS, is conducting pilot tests on the installed earthquake and tsunami early warning systems in the municipalities of Mabini and Calatagan, Batangas, that aims to provide a few extra seconds to allow companies to take necessary precautions to secure critical facilities and utilities.

CONDENSED VIEW

DOWNLOAD VIEW SEISMOGRAM

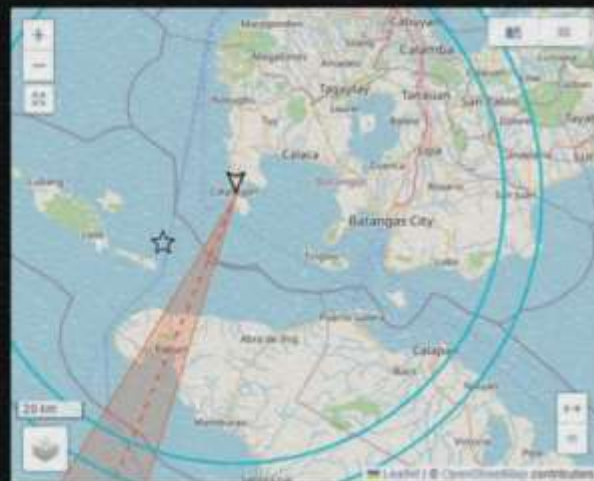
SEISMOGRAMS MESSAGES

S&P Beams



EXPAND CHART

Quality



PRODUCT

RAINWATER HARVESTING

The water collected from rainwater harvesting systems is suitable for human consumption and irrigation. It also helps reduce flooding and soil erosion, mitigating the adverse effects of climate change. This system is also low-cost, easy to maintain, and sustainable.

In Marawi, PDRF and its partners have been supporting communities not connected to piped systems due to challenging geographic locations by providing them with tools for rainwater harvesting. This helps reduce their vulnerability to water shortages and thus improves their livelihoods and well-being.



PRODUCT

DISASTER-RESILIENT MATERIALS

Various materials have been developed to mitigate damage caused by disasters. While a certain level of capacity and technology is required to produce these materials, using such materials is innovative as this is a cost-effective solution with positive social and environmental impacts.

Last year, PDRF distributed fiberglass boats to several fisherfolk communities in Agusan del Sur as part of its recovery efforts. The fisherfolks built these boats through training provided by PDRF partners. Fiberglass boats are more durable and sustainable than wooden boats and ensure their livelihood security during disasters.





APPROACH

COMMUNITY-BASED DRR

Community-Based Disaster Risk Reduction is a community- and people-centered approach which encourages the involvement of local stakeholders who understand the significant challenges and resources at the local level. This approach is crucial because it creates local ownership that leads to sustainability, addresses local hazards, and maximizes local resources.

PDRF recognizes the communities' contribution to building their disaster resilience through developing their capacity in disaster risk management as they better understand the local problems, vulnerability, and those who need extra support.



APPROACH

HAZARD MAPPING

A hazard map is essential for resilience planning and can help prevent severe damage and deaths. It highlights areas vulnerable to a particular hazard, such as earthquakes, volcanoes, landslides, flooding, and tsunamis.

Through its Community Resilience Program, PDRF and its local government partners facilitate the development of hazard maps which they can use in implementing strategies in preparing for disasters and developing contingency plans in their area.

APPROACH

SAFE SCHOOLS

One of the evident impacts of COVID-19 on the education sector was the closure of schools which significantly affected the learning modes of students. Reducing damage to schools and their quick recovery from disasters is vital to building a culture of safety in the community and ensuring learning continuity.

As part of its disaster recovery efforts, PDRF partners with the Department of Education and local government units in developing a Safer School Playbook to build safer and more resilient schools. The playbook will help empower the school personnel to implement safer school activities addressing disasters to ensure the safety of learners and staff.



EARLY WARNING SYSTEMS

Establishing earthquake and tsunami early warning systems that will provide a few extra seconds to allow companies to take necessary precautions to secure critical facilities and utilities.

CLIMATE RESILIENCE

Climate Resilient Cities is a 5-year project that aims to address climate crisis in vulnerable cities by increasing access to climate financing and building the resilience of communities and the natural ecosystem.



EMERGENCY COMMUNICATIONS

An all-in-one emergency communications package, the PLDT and Smart Ligtas Kit aims to supplement the municipalities' disaster preparedness and emergency response capacity to keep their residents safe. Each Ligtas Kit comes with emergency communications training to be conducted by PLDT and Smart together with PDRF.



AIRPORT READINESS

In partnership with DHL and UNDP, Get Airports Ready for Disasters Program in the Philippines focuses on airport assessment, the creation of action plans, and report writing that will develop airports as reliable and efficient delivery hubs for relief items and personnel during disasters.



BUSINESS CONTINUITY & ORGANIZATIONAL RESILIENCE



MSME RESILIENCE

In collaboration with national government agencies, PDRF works toward awareness raising and the implementation of DRRM-related programs and policies specifically for micro, small, and medium enterprises (MSMEs) across the country.



BC FOR MEMBER COMPANIES

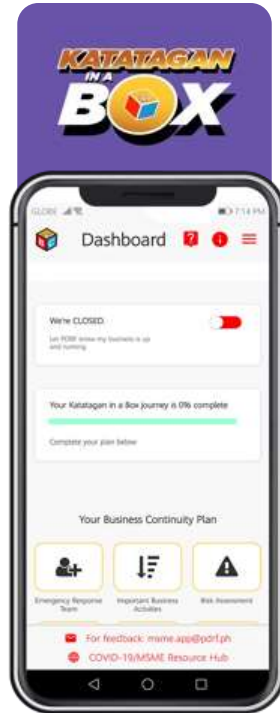
PDRF provides capacity building programs and technical assistance on business continuity management and supply chain resilience for member companies.



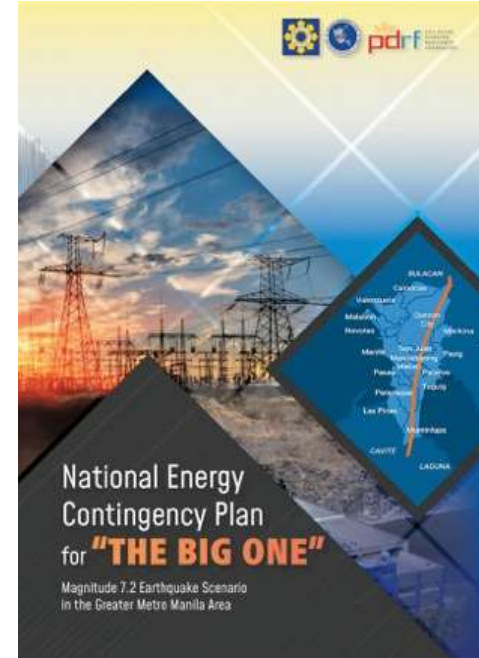
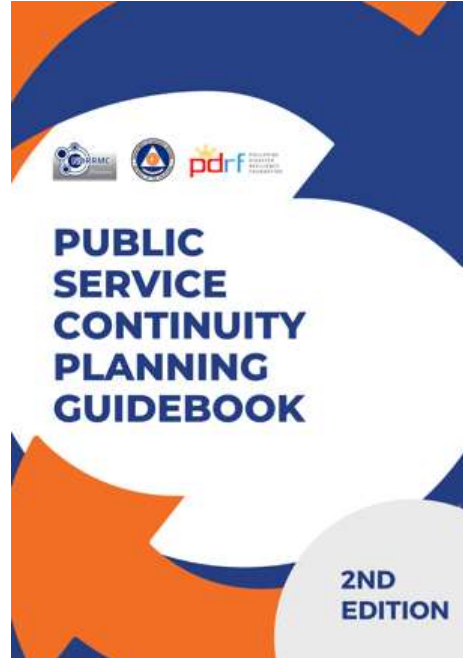
PUBLIC SERVICE CONTINUITY

In partnership with the Office of Civil Defense and the Department of Interior and Local Government, PDRF provides technical assistance in establishing public service continuity programs for national government agencies and local government units.

MSME RESILIENCE PROGRAMS AND TOOLKITS



PROGRAMS FOR PUBLIC SECTOR



AREA-WIDE BUSINESS CONTINUITY MANAGEMENT

The Area-wide Business Continuity Management (AWBCM) for Key Industries and Lifelines Utilities Project is a private sector initiative led by PDRF supported by USAID, which aims to make the business community resilient by developing a harmonized framework for the continuity of operations of different stakeholders.



PARTNERSHIPS

International



**UN HUMANITARIAN
COUNTRY TEAM**



**CONNECTING
BUSINESS**
INITIATIVE



DisasterLink
by Give2Asia

Regional



National



Local

**Local Government Units
Civil Society Organizations
Non-government Organizations**

Resilience must be
EVERYONE'S BUSINESS.

