

National Energy Transition Framework & Policy Direction

RE Targets, Key Reforms & RE options

June 10, 2026 | Makati City

LIZA V. PANGILINAN

Chief, – Technical Services Management Division
Renewable Energy Management Bureau
Department of Energy



RENEWABLE ENERGY ACT OF 2008



RA 9513



A Accelerate the Exploration and Development of RE resources



B Achieve Energy Self-Reliance



C Mitigate the Effect of Climate Change



INCENTIVES under the RE ACT



NON - FISCAL



- Feed-In Tariff System
- Net-Metering Program



- Green Energy Option Program
- Renewable Portfolio Standards



- RE Market



- 7 – Year Income Tax Holiday
- 10% Corporate Tax Rate post ITH



- Duty-Free Importation of Machinery, Equipment, and Materials
- Specialty Realty Tax Rate



- Zero VAT Rate
- Cash Incentives for Missionary Electrification

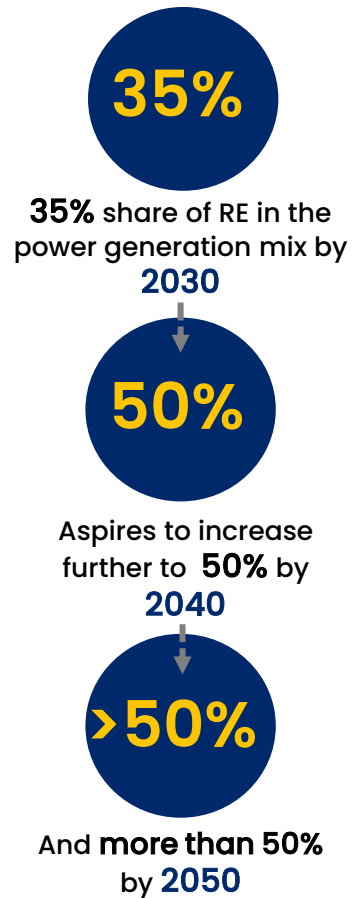
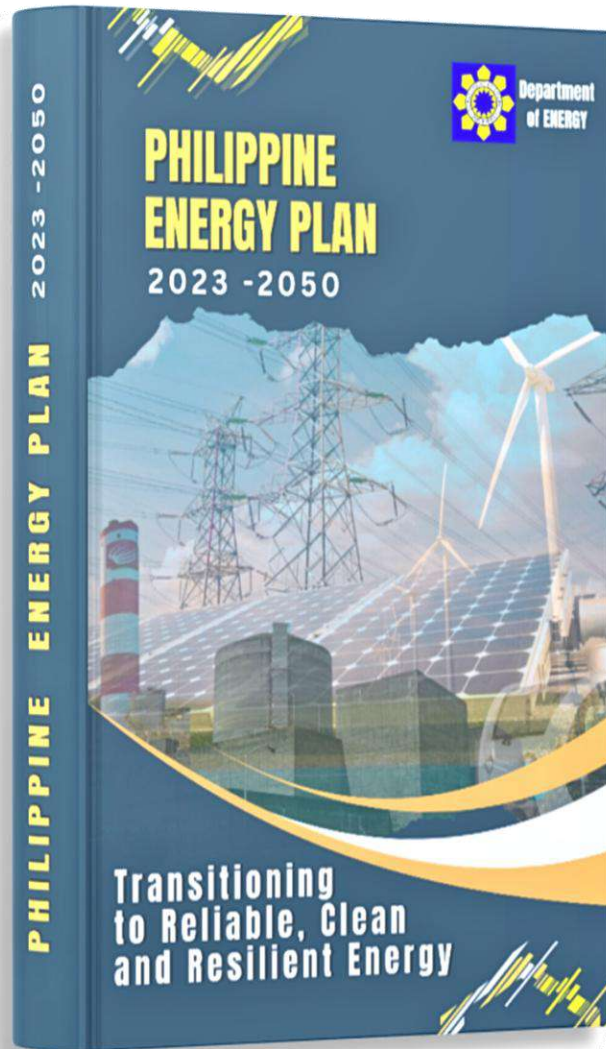
FISCAL



PHILIPPINE ENERGY PLAN



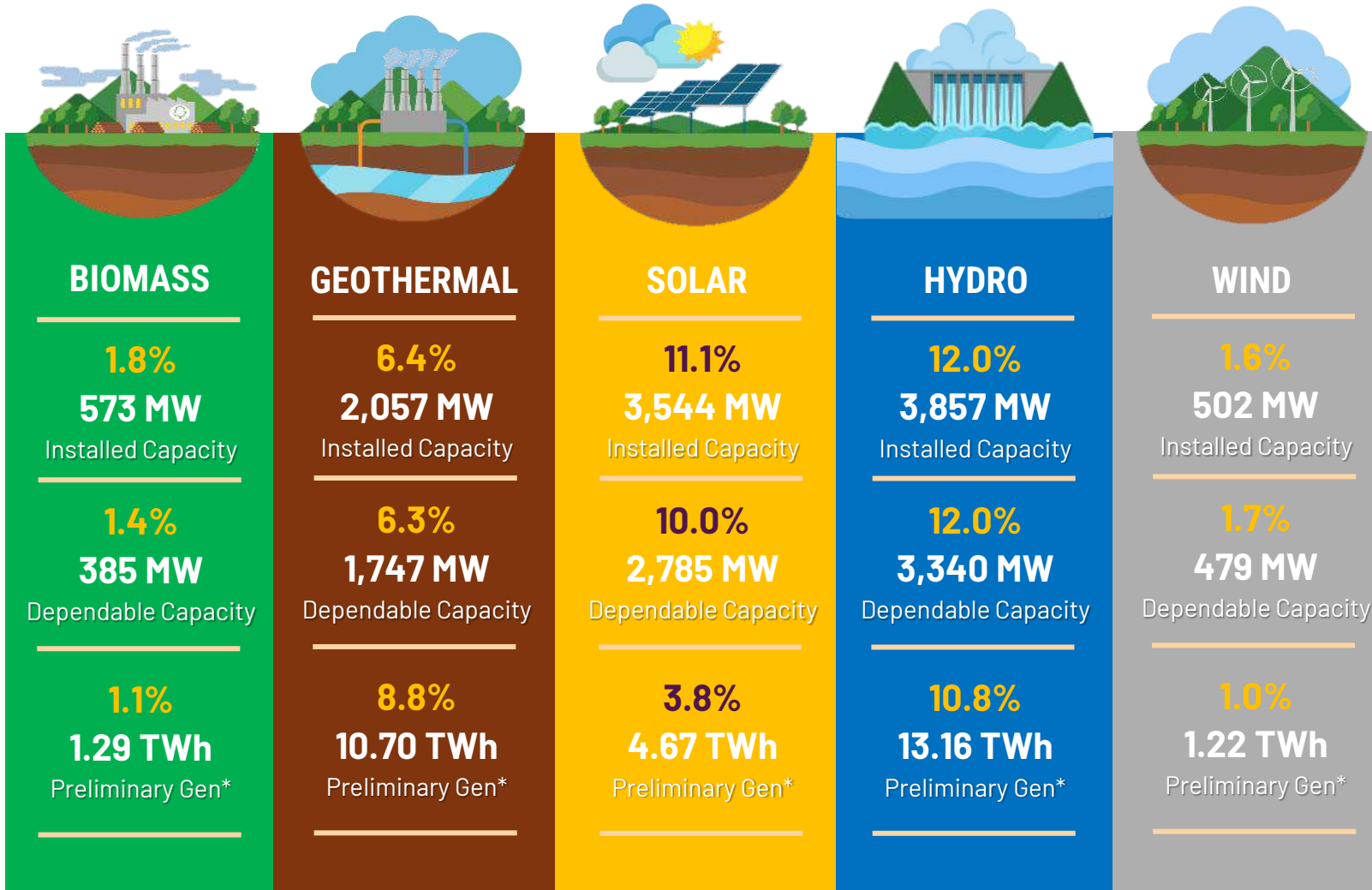
2023-2050



REFERENCE	
CLEAN ENERGY 1 (High RE with low OSW + Nuclear + Coal Repurposing)	<ul style="list-style-type: none">35% RE share in power generation mix by 203050% RE by 2040-2050
CLEAN ENERGY 2 (High RE with high OSW + Nuclear + Coal Repurposing)	<ul style="list-style-type: none">35% RE share by 2030, 50% RE by 2040, more than 50% by 2050Coal repurposingNuclear capacity of 1,200 MW by 2032, 2,400 MW by 2035 and 4,800 MW by 205019 GW of OSW by 2050
	<ul style="list-style-type: none">35% RE share by 2030, 50% RE by 2040, more than 50% by 2050Coal repurposingNuclear capacity of 1,200 MW by 2032, 2,400 MW by 2035 and 4,800 MW by 205050 GW of OSW by 2050

Scenarios

RENEWABLE ENERGY SHARE



10,533 MW
32.9%

Total Installed Capacity

8,736 MW
31.4%

Total Dependable Capacity

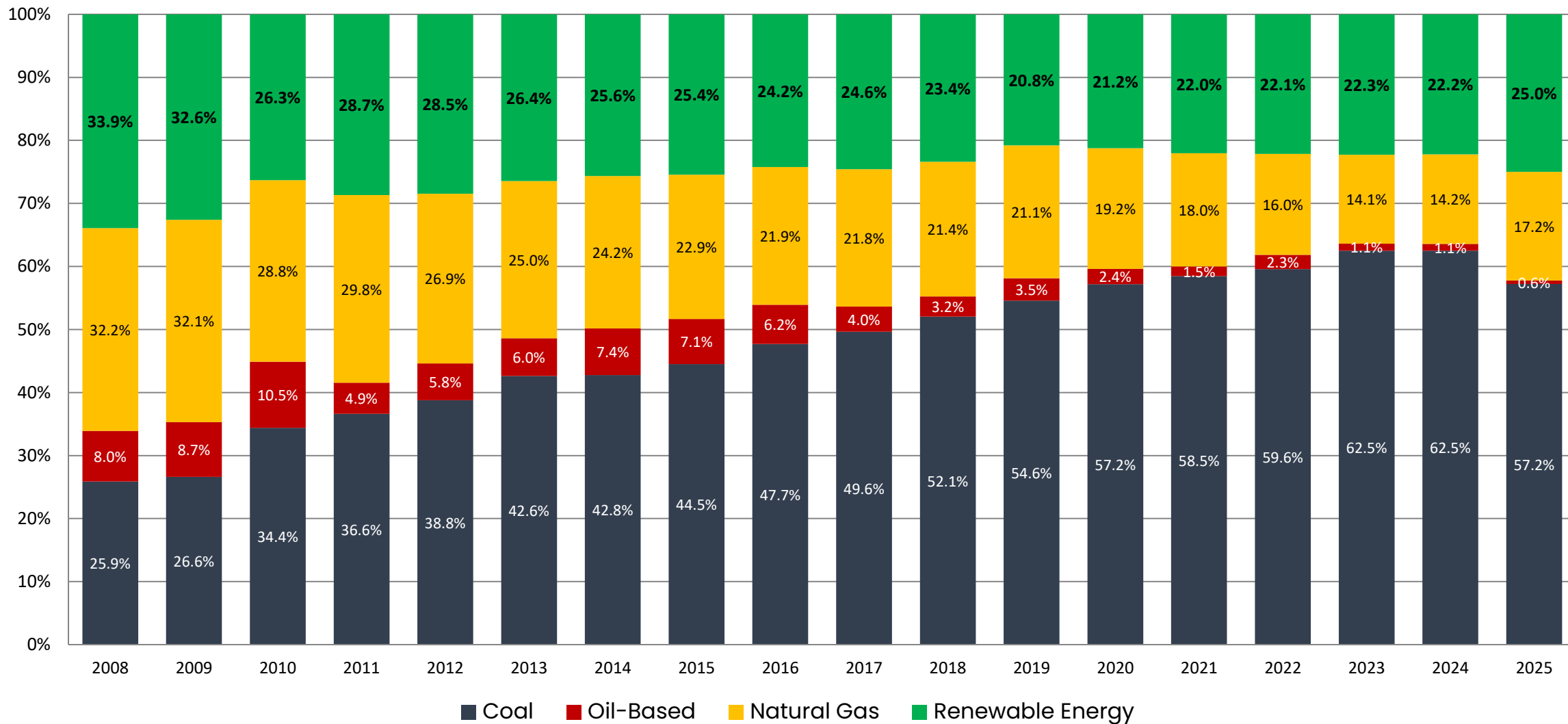
31.04 TWh
25.4%

Preliminary 2025
RE Gross Generation*

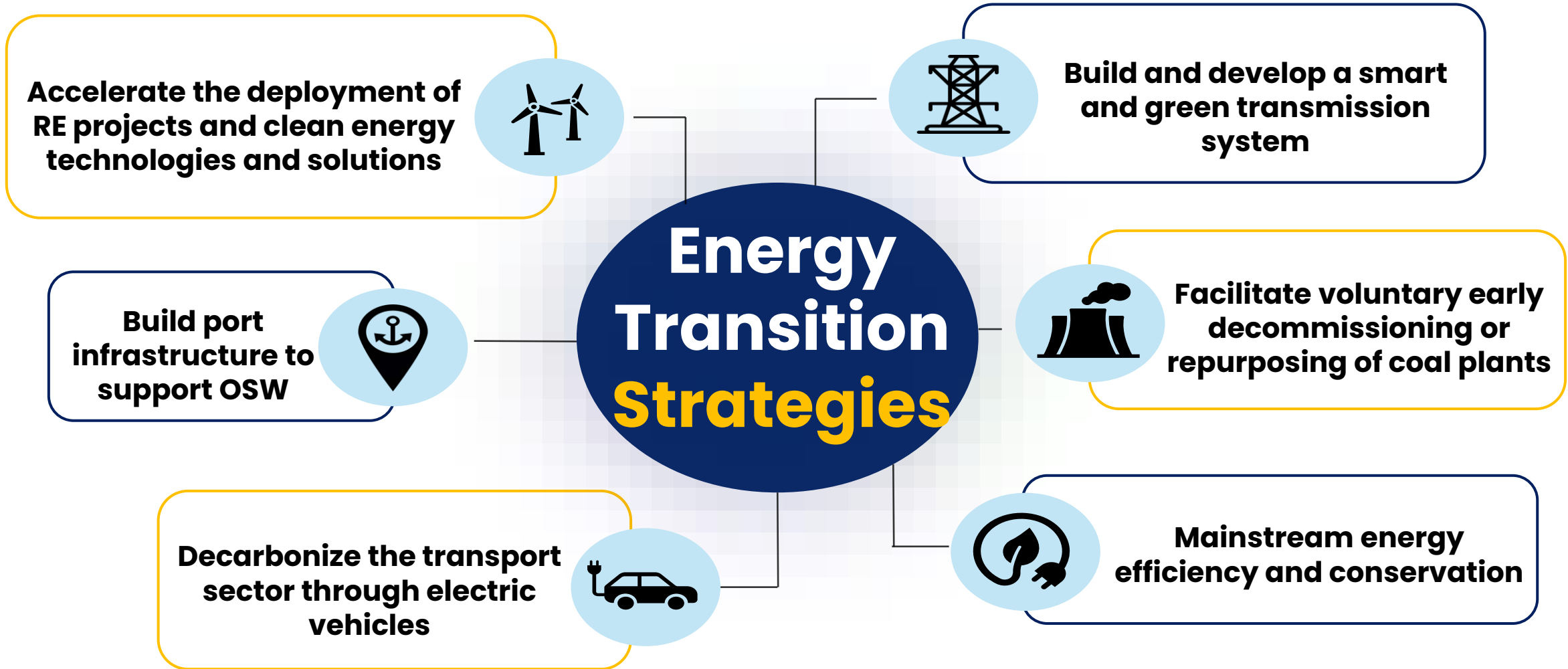
Source: DOE List of Existing Power Plants as of November 2025

Note: * Based on NGCP CDOR data, which may be metered at the transmission side of the plant and may correspond to the Plant Net Generation. Final figures will be provided upon consolidation of all MOR submission of Generation Companies

POWER GENERATION MIX



TRANSITION FRAMEWORK



MARKET OR OFFTAKE FOR



RE PROJECTS

FEED-IN-TARIFF (FIT) SYSTEM

It is a scheme primarily used to attract private entities to invest in the RE sector to deploy additional power supply using the RE sources.

1



5

NET-METERING PROGRAM

Allows end-users to generate electricity from RE-based systems up to 100 kW for own use and sell their excess to the grid

RENEWABLE PORTFOLIO STANDARDS

Requires all load-serving entities, both in on-grid and off-grid areas, to source or produce a specified portion of their supply from eligible RE facilities

2



6

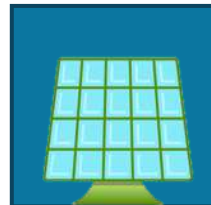
EXPANDED ROOFTOP SOLAR PROGRAM

Open to all roof-mounted solar energy generating facilities with a capacity of above 100 kWp, intended for own-use and/or export of energy

GREEN ENERGY AUCTION PROGRAM

Provides additional market for RE through a competitive electronic bidding of RE capacities

3



7

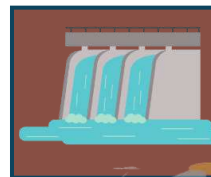
GREEN ENERGY OPTION PROGRAM

Provides end-users the option to choose RE resources as their electricity source

PREFERENTIAL DISPATCH IN THE WESM

RE generating units are given preference in the WESM dispatch schedule to ensure its maximum output injection in the grid.

4



8

RENEWABLE ENERGY MARKET

Serves as venue for transparent and fair trading of RE Certificates



OPTIONS & OPPORTUNITIES

A

Net-Metering Program

Net-Metering refers to a system, appropriate for distributed generation, which shall not exceed 100kW in which a distribution grid user has a two-way connection to the grid and is only charged for his net electricity consumption and is credited for any overall contribution to the electricity grid.

B

Green Energy Option Program

It is a voluntary policy mechanism that allows electricity end-users with 100kW and above demand to source their electricity supply from renewable energy sources through RE Suppliers.

C

Expanded Roof-Mounted Solar Program

This program covers for all roof-mounted solar energy generating facilities with a capacity of above one hundred-kilowatt peak (100 kWp), intended for own-use and/or export of energy to its host distribution utility (DU) or to the Grid.



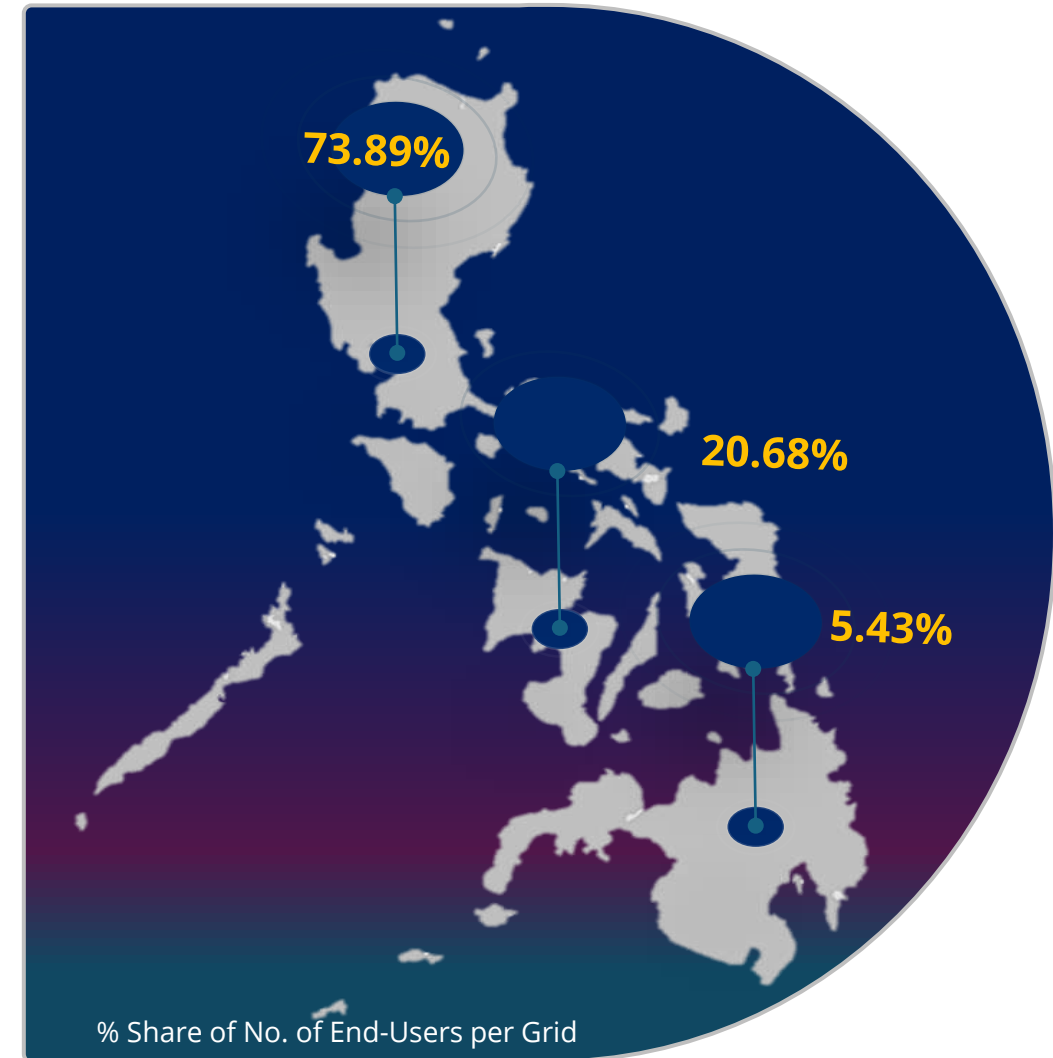
NET-METERING PROGRAM



Summary of Implementation per Grid

As of April 2026

Island Grid	Qualified End-Users	Capacity (kWp)
Luzon	18,529	164,570.57
Visayas	3,329	46,065.74
Mindanao	994	12,098.42
TOTAL	22,852	222,734.72



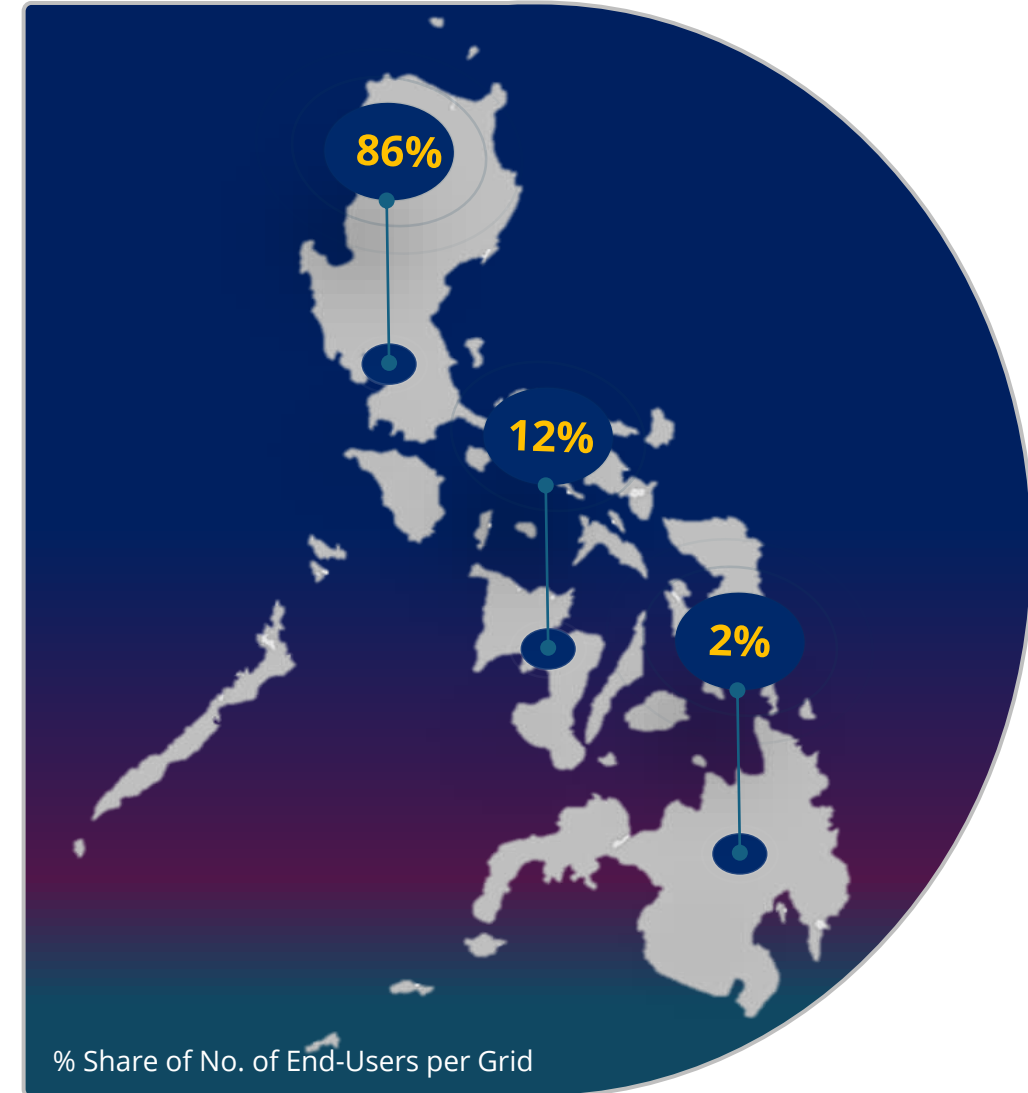
GREEN ENERGY OPTION PROGRAM



Registered End-Users

As of March 2026

Island Grid	GEOP End-Users	Peak Demand, kW
Luzon	752	230,694.79
Visayas	107	40,500.58
Mindanao	18	5,508.45
TOTAL	877	276,703.82



ENHANCEMENTS TO THE GEOP



- 1 Lowering the GEOP threshold**
Lowering the threshold from 100 kW to 50kW & Allowing Aggregation
- 2 Supply Flexibility**
Allowing 50% of Replacement Power to be sourced from WESM / Non-RE resources and Volume-based Matching
- 3 Allocation of RE Certificates to the End-Users in the Voluntary RE Market**
- 4 Streamlined GEOP Operating Permit Process**



RENEWABLE ENERGY SUPPLIERS



EDC Group



- 1 First Gen Energy Solutions, Inc.
- 2 Bac-Man Geothermal, Inc.
- 3 Green Core Geothermal, Inc.

Aboitiz Group



- 4 AdventEnergy, Inc.
- 5 Therma Luzon, Inc.
- 6 AP Renewables Inc.
- 7 Aboitiz Energy Solutions, Inc.
- 8 Prism Energy, Inc.
- 9 SN Aboitiz Power-RES, Inc.
- 10 SN Aboitiz Power - Magat, Inc.

Ayala Group



- 11 ACEN Corporation
- 12 DirecPower Services, Inc.

Others



- 13 Citicore Energy Solutions, Inc.
- 14 Shell Energy Philippines, Inc.
- 15 EEI Energy Solutions Corporation
- 16 Solar Philippines Retail Electricity, Inc.
- 17 Kratos RES, Inc.
- 18 Mpower
- 19 FDC Retail Electricity Sales Corporation
- 20 Team (Philippines) Energy Corporation
- 21 Minergy Retail Energy Solutions, Inc.
- 22 Mabuhay Energy Corporation
- 23 Rockport Power, Inc.
- 24 Enerxia Corp.

24

RE Suppliers

as of September 2025

BENEFITS OF USING RE



- **Cost Saving**
- **Sustainability**
- **Branding**



SUSTAINABLE ENERGY AWARDS



Iloilo Provincial Government wins the LGU Category of DOE's 1st Sustainable Energy Awards in 2024

Iloilo Pro-GReEn

Iloilo Province Goes Renewable Energy

I-PREP

Iloilo Provincial Renewable Energy Plan

I-PORE

Iloilo Provincial Ordinance for Renewable Energy



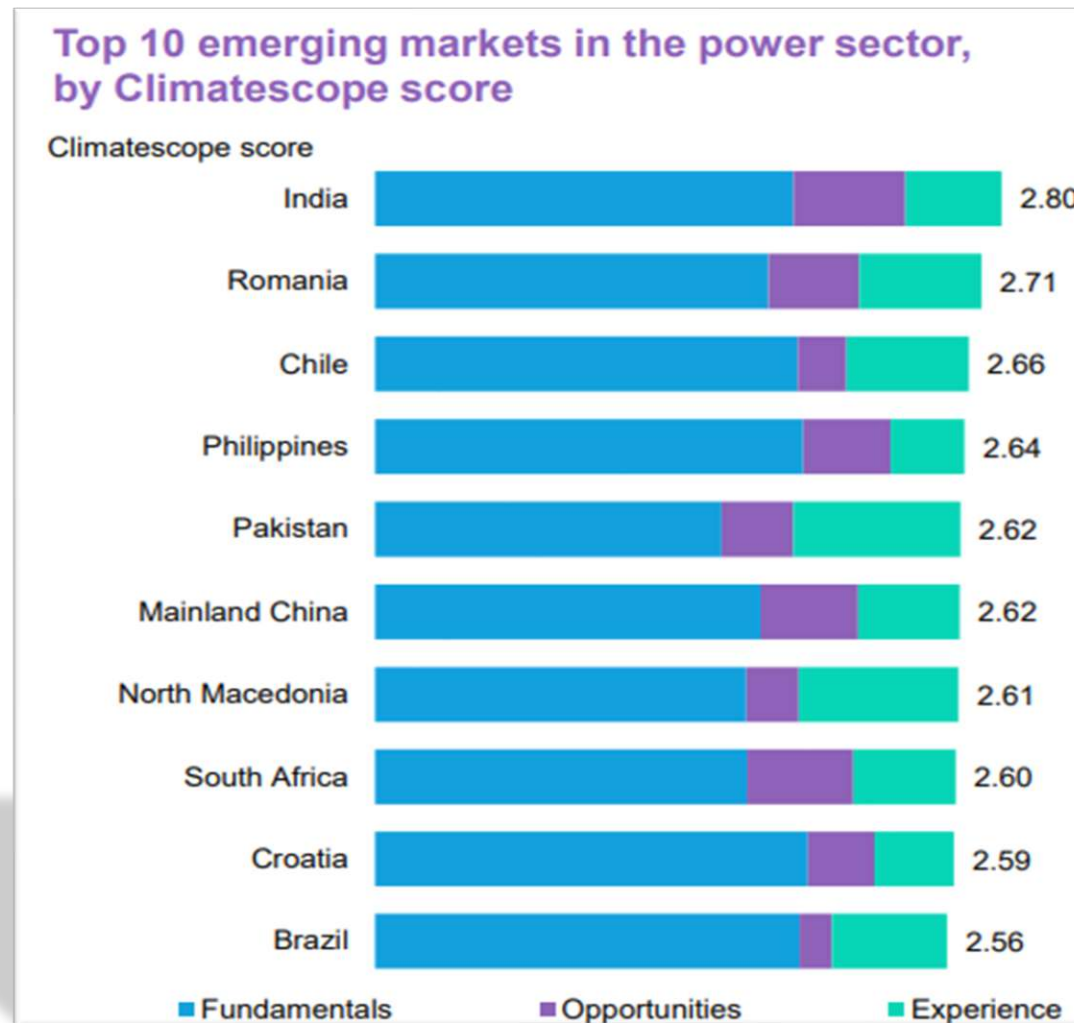
SUSTAINABLE ENERGY AWARDS



Provincial Government of Samar wins the LGU Category of DOE's 2nd Sustainable Energy Awards in 2025



RECOGNITION



**Philippines is the
World's 4th most
attractive emerging
market for
Renewable Energy
Investment**

Source: BloombergNEF 2025 ClimateScope Report





**Transitioning to RE is
not just a choice,
but a responsibility**





**Thank
You**

