

# Expanding Health Service Delivery through Primary Health Care

Disease Prevention and Control Bureau  
Mar 30, 2022



Republic of the Philippines  
**Department of Health**

# MANDANAS RULING AND EO 138

## FULL DEVOLUTION

Just share of LGUs from the national taxes not only from “national internal revenue taxes” collected by BIR but includes collections of the Bureau of Customs, and other tax collecting agencies.

**LGUs to assume responsibility for the delivery of devolved services** as prescribed in Sec 17 of the Local Government Code



The role of the **National Government** is to set national policy, developmental strategy, and service delivery standards, and to assist, oversee and supervise the LGUs (Sec 2a)





**UNIVERSAL HEALTH CARE**  
KALUSUGAN AT KALINGA PARA SA LAHAT

# UNIVERSAL HEALTH CARE ACT

To ensure equitable **access to quality and affordable health care** and **protection against financial risk.**

---

GENERAL OBJECTIVE



# Paradigm Change is Inherent in UHC

**UHC  
Promise**



**Key  
Reform  
Area**

**Primary Health Care**

**Province-/City- wide  
Health Systems  
Integration**

**Predictable and  
Precise Fees**



# A SHIFT IN DIRECTION

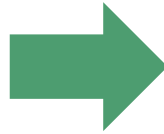
Disease-specific intervention

Curative (Hospital, Clinics)

Direct Health care Delivery

Individual-based

Silos/ Program approach



Primary Health Care Approach

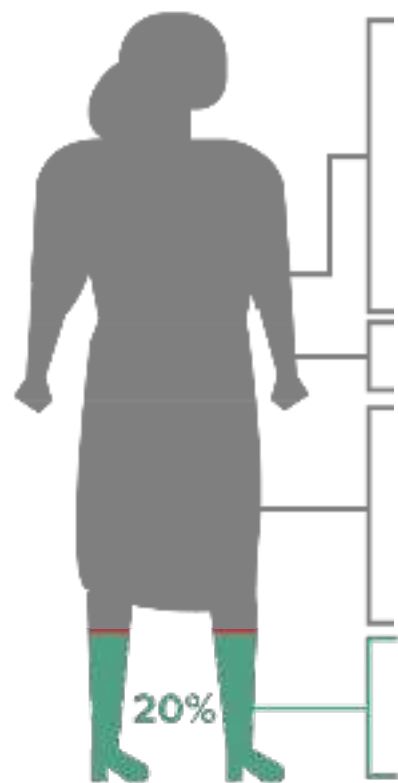
Preventive and Promotive Health

Lifestyle

Population-based

Integrated





**Health Care**



Access to Care  
Quality of Care

Only 20% include those moments in a healthcare environment

Source: Institute for Clinical Systems Improvement, *Going Beyond Clinical Walls: Solving Complete Problems* (October 2014)



# SOCIAL DETERMINANTS OF HEALTH



Source: Institute for Clinical Systems Improvement, Going Beyond Clinical Walls: Solving Complete Problems (October 2014)





## INDIVIDUAL PROGRAMS





# INTEGRATION OF SERVICES FOR THE PERSON



# LINKING SERVICES ACROSS THE CARE PATHWAY



© shutterstock



# INNOVATIONS FOR GREATER ACCESSIBILITY



Telemedicine

Task shifting



Institutionalizing Mobile Outreach



# PRIMARY CARE - FOCUSED Integrated Care

EMERGENCY



MOST  
CONCERNS



L3 Hospital

Specialty Outpatient,  
L1, L2 Hospitals  
Other health facilities



HEALTH CARE  
PROVIDER  
NETWORK  
(HCPN)



Health Station  
(School Clinics)

Primary Care Facility



Services that may be  
contracted

PRIMARY  
CARE  
PROVIDER  
NETWORK  
(PCPN)







Courtesy of Angat Lokal PH

# HEALTH PROMOTION

## Priority Areas



### Diet and Exercise

Enabling improved nutrition and increased physical activity



### Environmental Health

Minimizing environmental and climate impacts on health



### Vaccines and Immunization

Reducing deaths and disabilities from vaccine-preventable diseases



### Substance Use

Preventing tobacco, illicit drug use & binge drinking



### Mental Health

Increasing psychosocial and mental well-being



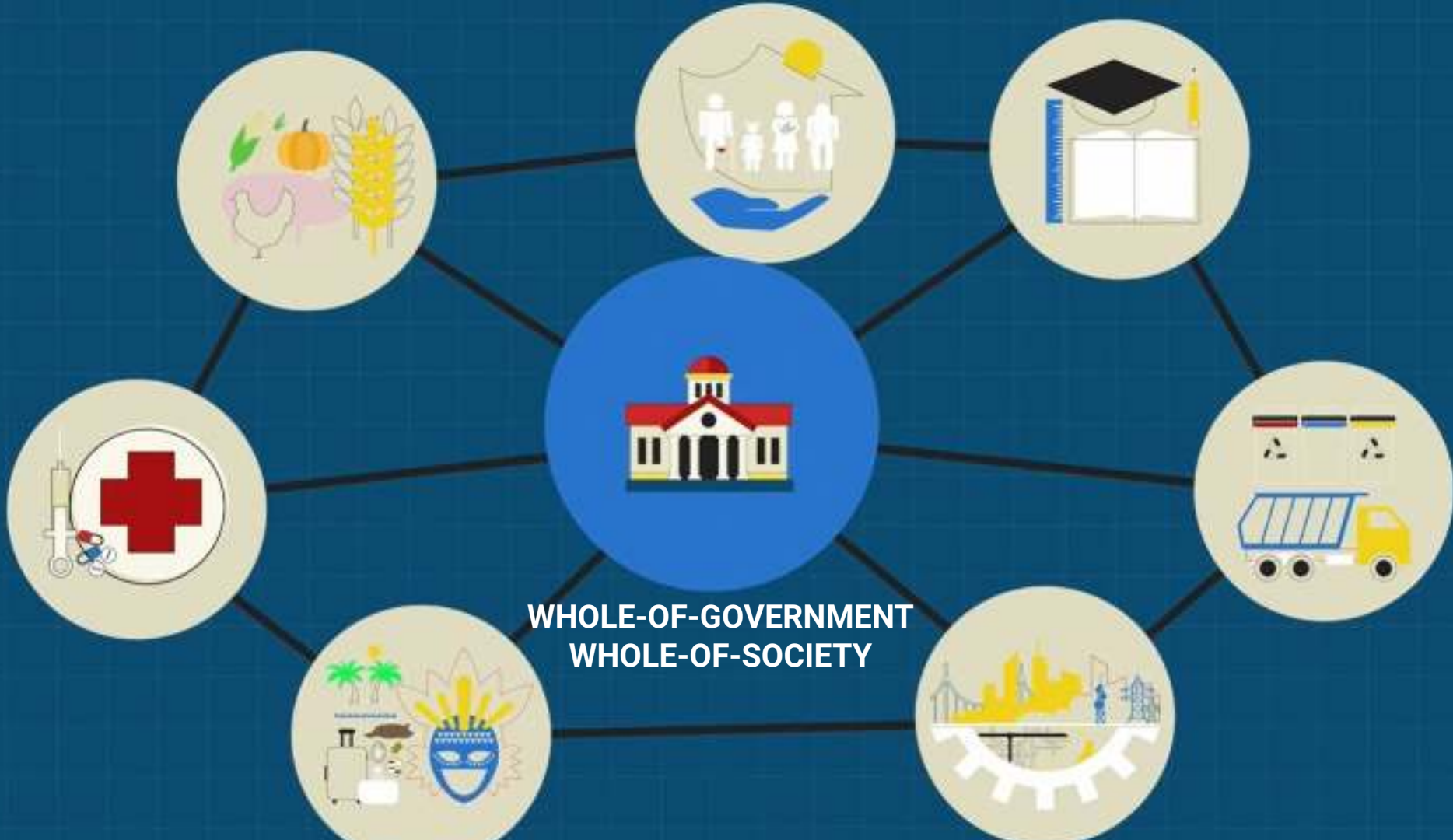
### Sexual and Reproductive Health

Promoting positive sexual and reproductive behavior



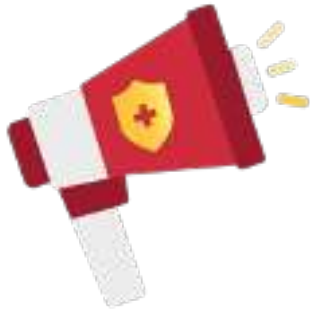
### Violence and Injury Prevention

Fostering safe and inclusive communities





# HEALTH PROMOTION



- Process of enabling people to increase control over, and to improve, their health.
- Beyond a focus on individual behaviour towards a wide range of social and environmental interventions.
- This is accomplished by
  - **building healthy public policies**
  - **creating supportive environments**
  - **strengthening community action**
  - **developing personal skills.**
  - **reorienting health services**



