



Community Optimized Managed Electric Transport

MOVING PEOPLE
TO A BETTER TOMORROW





OUR JOURNEY STARTS ***IN THE PHILIPPINES***

The top contributor to pollution and congestion also happens to be the main form of transportation for most Filipinos

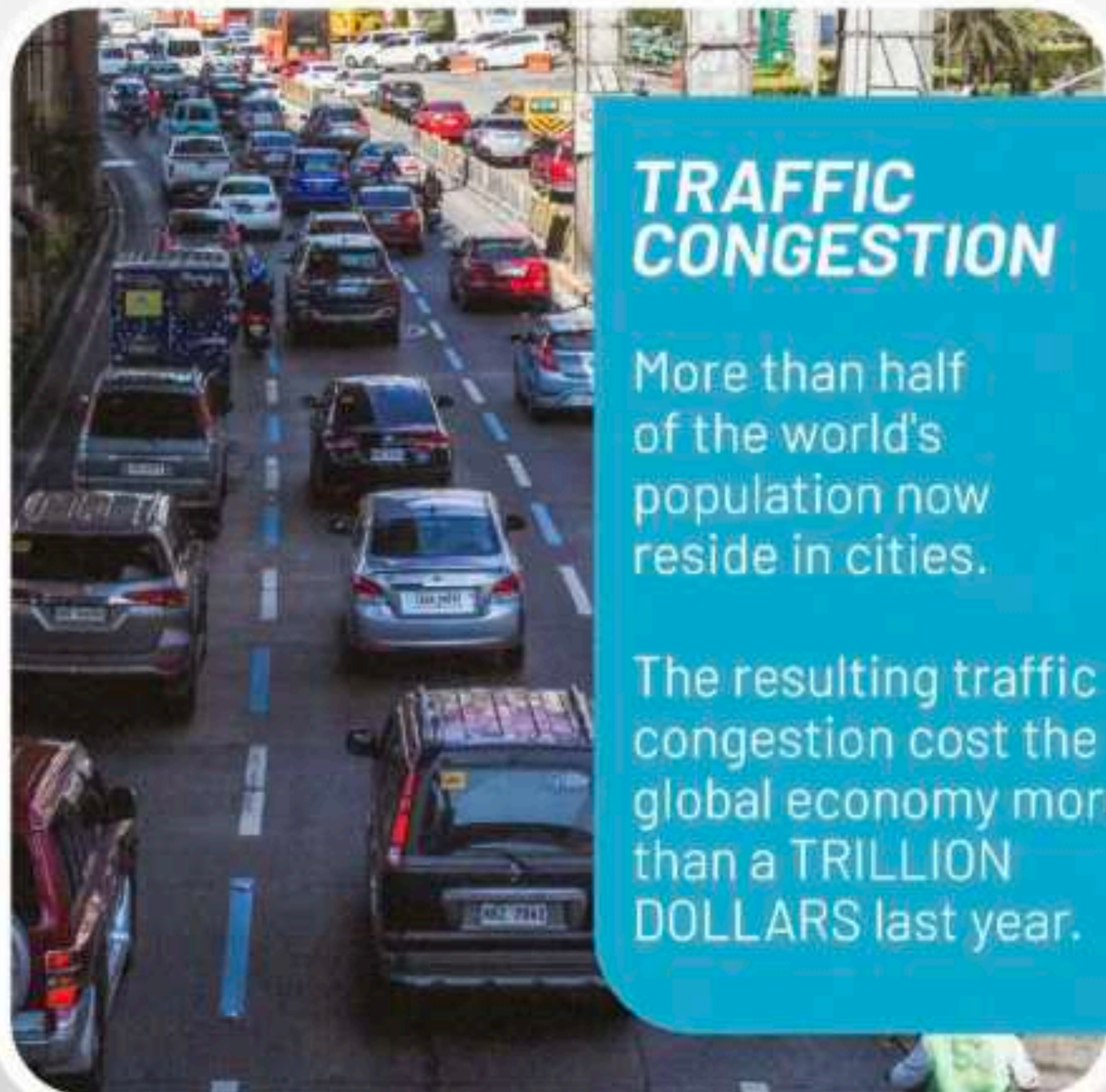
The Jeepney

There are over
300,000
old dilapidated and
polluting jeepneys nationwide

80,000
in Metro Manila alone.

They account for
40% of Public transport
and **30% of the pollution**

WE SOLVE TWO OF THE WORLD'S BIGGEST PROBLEMS



TRAFFIC CONGESTION

More than half of the world's population now reside in cities.

The resulting traffic congestion cost the global economy more than a **TRILLION DOLLARS** last year.

AIR POLLUTION

Vehicles account for 50% - 70% of the air pollution in most cities.

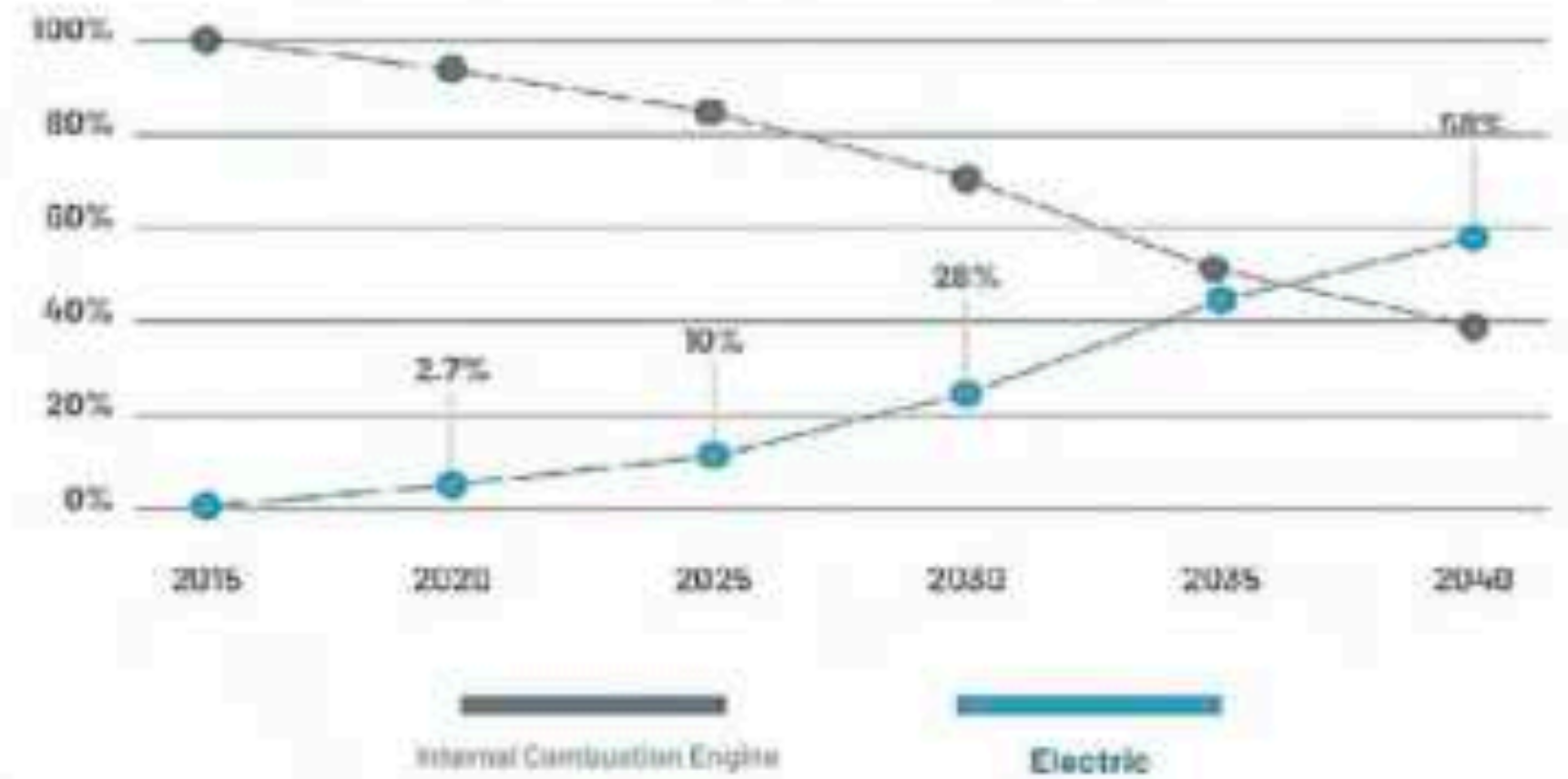
Air pollution kills **7 MILLION** people a year.



TECHNOLOGY

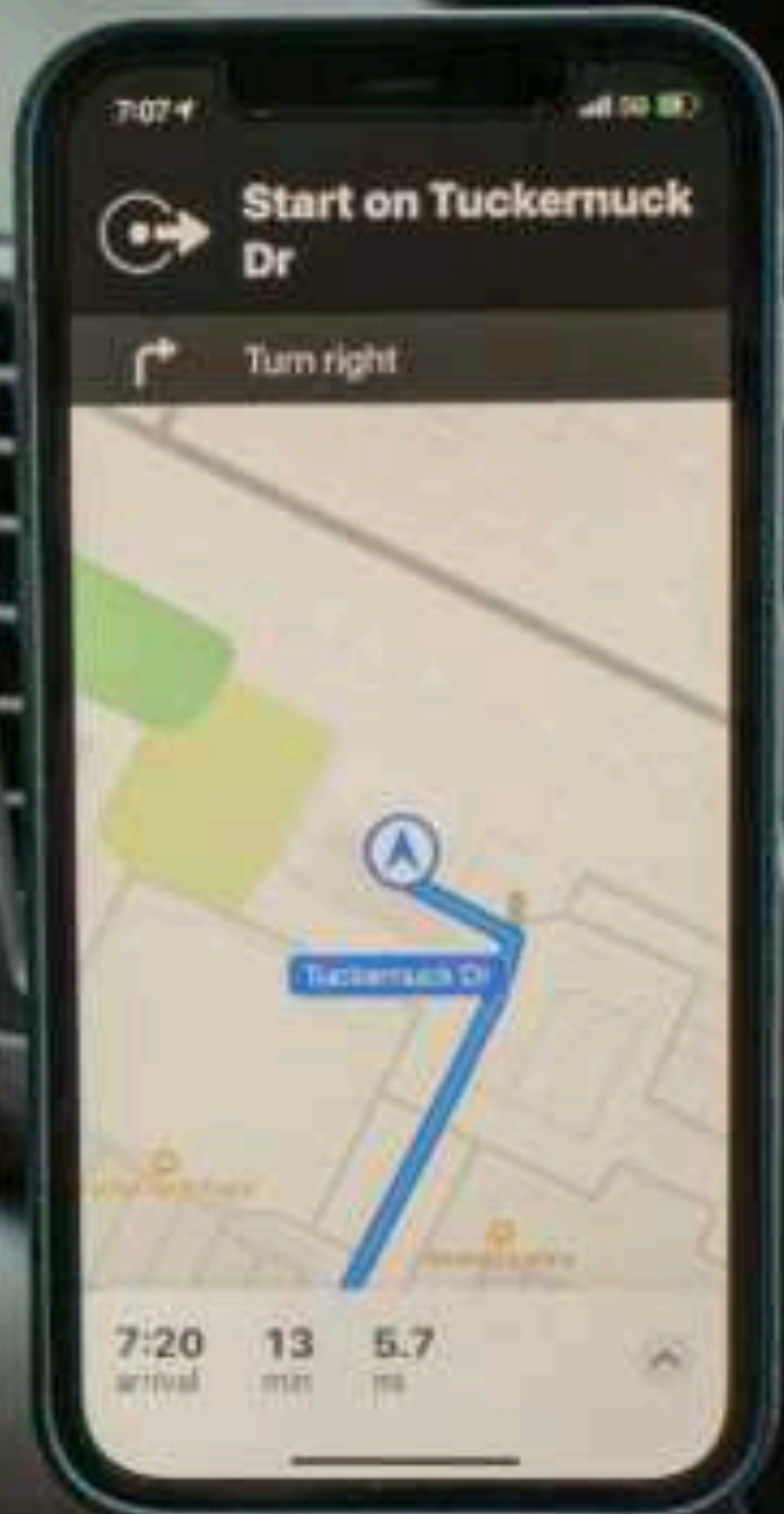
IS COMING TO THE RESCUE

The Development of the **Electric Vehicle** and the end of the **Internal Combustion Engine**



The Rise of the **Smartphone** as a **transport device**

GLOBAL MOBILITY AS A SERVICE MARKET



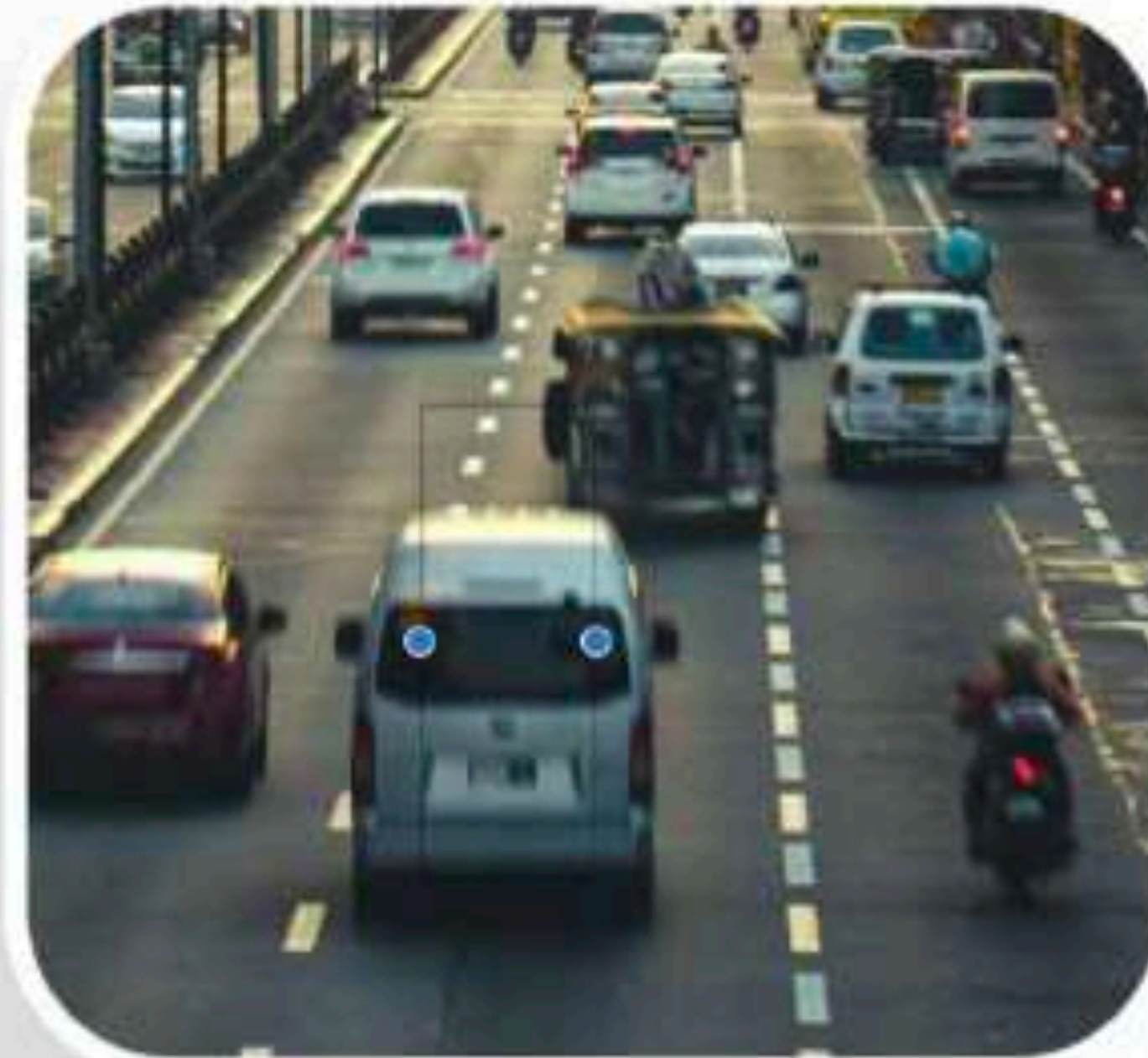


WHILE MOST OF THE WORLD
FOCUSES ON

**HIGH SPEED,
HIGH-PRICED
ELECTRIC CARS**



OR **LOW CAPACITY
RIDE SHARING
SYSTEMS**



WE HAVE FOCUSED ON

**MASS TRANSPORT
IN DEVELOPING
COUNTRIES**



WE USE **FORMULA E ENGINEERING**

We partnered with QEV Technologies, a race car engineering firm from Spain to create a world class, all-electric, pollution free, thirty passenger, transport solution.



WE PUT IN **WORLD CLASS FEATURES**

IN A **BUDGET PRICED VEHICLE** for emerging markets



We partnered with EV Dynamics, a specialized EV manufacturer from China to ensure we build the best electric bus for the use of our clients



Fully Electric 350V
Nominal Voltage



70 kph Top Speed
(Programmable)



54 kW CATL Lithium
Iron Phosphate Battery



Fast Charging
20% to 90% in 45 mins



100 km
Vehicle Range



Air-Conditioned



PWD
Accessible



Community
Wi-Fi Enabled



GPS Tracked and
Fleet Managed



Zero-emission



Roomy Interiors
(6.3m L x 2.3m x 2.8m H)



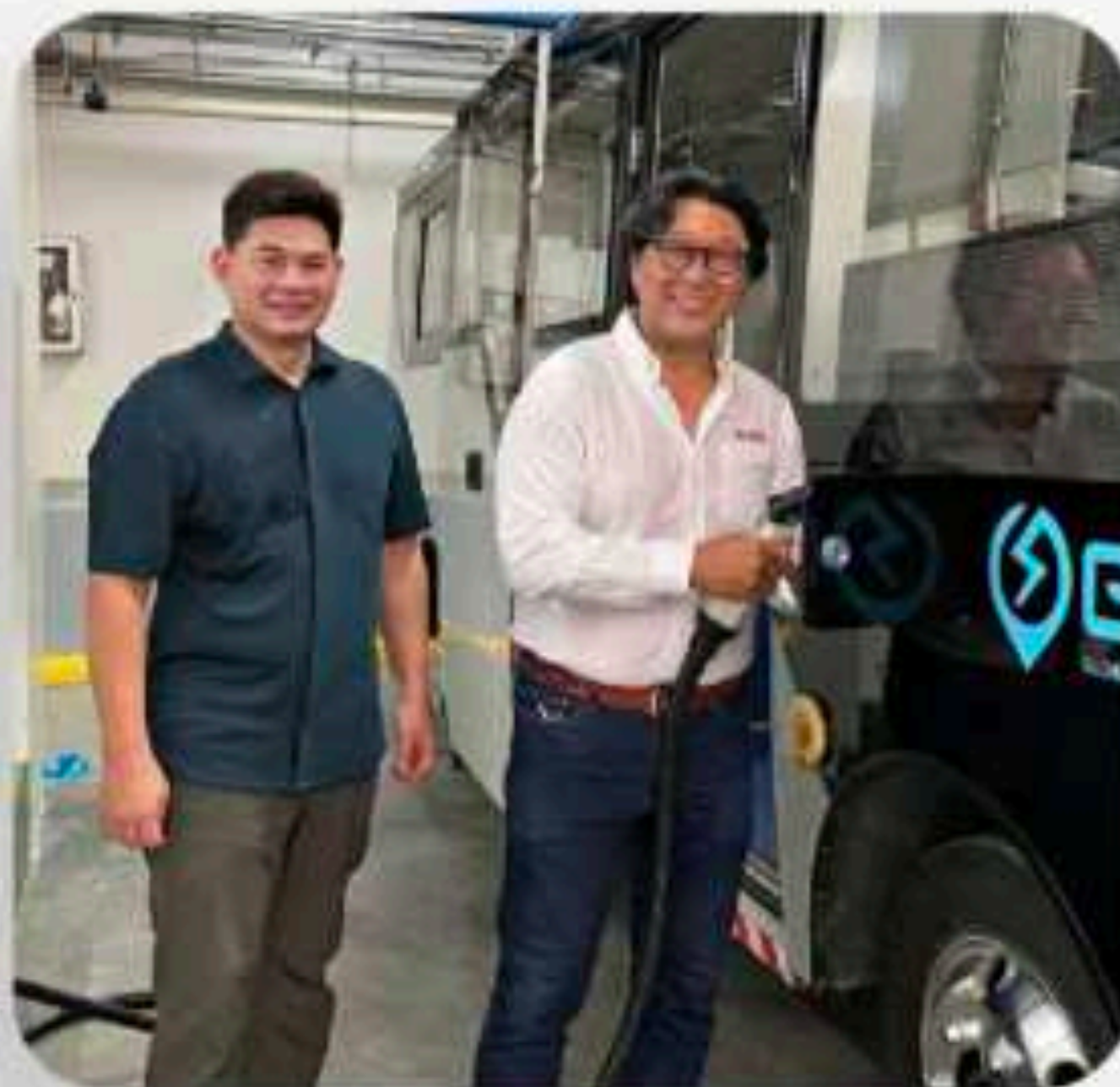
30 passenger
capacity

WE HAVE THE LARGEST FAST CHARGING INFRASTRUCTURE IN THE PHILIPPINES

Fast charging is the most efficient system for powering transport fleets. Working with IMI (an Ayala Company) ensures that they are continuously serviced and available for use at all hours

Our fast charger network will continue to grow as we roll out more charging stations to service our growing clientele

7 installed
5 waiting for deployment
60 more scheduled in 2023



A member of  AC Industrial



WE CONNECT OUR PASSENGERS TO THEIR RIDE

WITH OUR **SMART APP**

This smart transport system allows us to manage our fleets, and for our passengers to track their rides

RIDE MONITORING

INFORMATION & NOTICES

PASSENGER TRACKING

CASHLESS TRANSACTIONS



WE GENERATE REAL TIME REPORTS

WITH OUR FLEET MANAGEMENT SYSTEM



We monitor the COMET from the driveway to the highway allowing us to optimize routes and schedules and make transport smarter and more efficient

As the GET system matures we should be able to monetize the data using our business intelligence tools and our system should be able to deliver high-value, easy-to-use data results.



THE FIRST SUSTAINABLE TRANSPORT ECOSYSTEM IN THE WORLD

Our business model has made GET a significant first mover in electric mobility as a service (eMaaS)

1 A world-class, zero-emission, thirty-passenger electric minibus developed by Formula-E racing engineers

1

2 A smart app-based fleet management and fare collection system that improves the customer experience and makes transport more intelligent and more efficient

2

3 A fast charger network which allows the COMET vehicles to operate on a near 24/7 basis and service clients day and night

3



WE HAVE A SOLID TRACK RECORD AND HAVE GENERATED POSITIVE ENVIRONMENTAL IMPACT

YEAR OF OPERATION	CLEAN KM TRAVELLED	KG OF CO2 REDUCTION	TREES EQUIVALENT CO2 ABSORPTION
2020	21,130 KM	10,142 KG	143 TREES
2021	323,989 KM	155,514 KG	2,190 TREES
2022	1,171,556 KM	562,346 KG	7,810 TREES

65 COMETS NOW IN THE PHILIPPINES

THE COMET IS THE ONLY ELECTRIC BUS
THAT CAN HANDLE THE SLOPES OF BAGUIO



**WE SAVE MONEY
AS WE SAVE
THE PLANET**

**WE MAKE A PROFIT
AS WE MAKE
A DIFFERENCE**

JEEPNEY



5.5 km per liter

EURO 4



3.2 km per liter

COMET



2.2 km per kW
(50.18 per kWh)

"Fuel" cost per liter	P68.00	P68.00	P15.35
Cost per kilometer	P12.36	P21.25	P4.72
Fuel cost per day	P2,472	P4,250	P944
Fuel cost per year	P741,818	P1,275,000	P283,303
CO2 released per day	83.62 kg	143.72 kg	0 kg
CO2 released per year	25,085 kg	43,115 kg	0 kg

FUEL COST AS OF JANUARY 2023

WE ARE AT THE RIGHT PLACE AT THE RIGHT TIME

National, News

Marcos OKs temporary zero-tariff policy for e-vehicles, spare parts



President Ferdinand Marcos Jr. in a meeting. Photo courtesy of Malacañan

GOVERNMENT IS NOW PRIORITIZING EVS

Republic Act (R.A.) No. 11697 or the **Electric Vehicle Industry Development Act (EVIDA)** which became effective last May 11, 2022, aims to provide an enabling environment for the development of electric vehicles (EVs) as an attractive and feasible mode of transportation to reduce dependence on fossil fuels

SMART ELECTRIC SHUTTLE PROGRAM

The Department of Transportation (DOTr) recognizes the need to reduce pollution and decongest traffic by promoting the use of fleets of clean, sustainable, comfortable, and efficient electric vehicles integrated with a passenger and fleet management system - providing even more momentum to the smart electric mobility solution that GET is pioneering



GET OFFICIALS WITH DOTR SECRETARY BAUTISTA

WE ARE INCLUSIVE

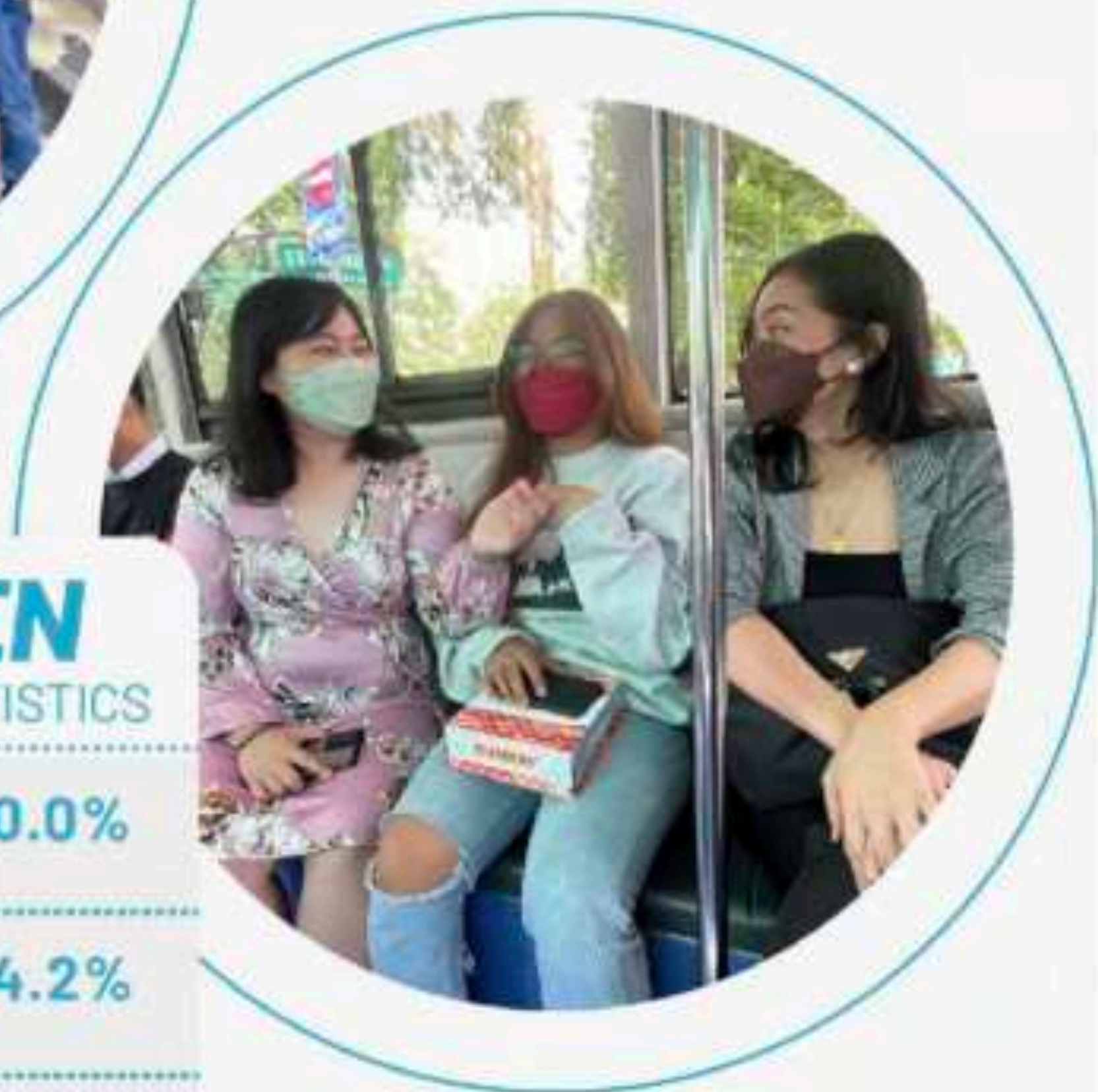
The COMET is a timely and much needed mobility solution for those who need it the most

From **women** to **people with disabilities** (PWDs) and others who have been ignored by the transport sector.

These groups are now using the COMET to create their own sustainable transport network which will bring us into every province, city and town in the Philippines.



PWD



WOMEN

RIDERSHIP STATISTICS

TOP 100 70.0%

TOP 200 64.2%

TOP 1000 61.8%

TOP 5000 60.9%

WE BUILD COMMUNITIES

Small is Beautiful

Economics as if people mattered

The **COMET** is the “Goldilocks” of vehicles in that it is just **the right size**.

It is **more efficient than a car** in carrying passengers, and not as big as a bus which allows us to customize routes and solutions for a variety of communities and clients.

The COMET is also **the right price**. We can roll out a smart and sustainable transport solution in a fraction of time and a fraction of the cost of big ticket transport infrastructure projects.



WE ARE THE BEST ALTERNATIVE AVAILABLE

THE PREFERRED VEHICLE OF
TRANSPORT ORGANIZATIONS



THE ONLY ELECTRIC VEHICLE
SUITABLE FOR JEEPNEY AND
TRANSPORT COOPERATIVES
AS THEY REPLACE
THEIR OLD DIESELS

COMPANIES ARE SIGNING UP
FOR SHUTTLE SERVICES



ORGANIZATIONS ARE
SUBSCRIBING AS THEY
REALIZE THE NEED FOR
A SUSTAINABLE AND
RESPONSIBLE TRANSPORT
SERVICE

NIGHT SHIFT OPERATIONS
FOR BPOs AND CALL CENTERS



BPOs COMPLEMENT
DAYTIME OPERATIONS
AS THEY OPERATE AT NIGHT
DURING THE "OFF-PEAK" HOURS



ELECTRIC MASS MOBILITY AS A SERVICE (EMMaS)

EARNING FROM OPERATIONS
IS MORE PROFITABLE
THAN JUST SELLING VEHICLES

PARTNERS SHARE IN THE COSTS AND THE REWARDS

Rolling out a fleet of electric vehicles is still a very difficult and expensive undertaking

Partners share in the vehicle costs and also have a share in the profits



JEEPNEY MODERNIZATION MODEL:

Our Public Utility Vehicle Modernization Program (PUVMP) seeks to replace the dilapidated and polluting jeepneys with modern eco-friendly COMETs, without displacing current operators and drivers. GET covers half the vehicle cost, while the transport cooperatives finance the balance through the government banks who are now prioritizing EVs.



SMART ELECTRIC SHUTTLES:

GET brings in Electric Vehicle Partners (EVPs) to deploy private shuttle networks and run customized routes to service corporations and organizations who are looking to comply with their environmental, social and governance (ESG) initiatives and service the needs of their employees, customers and stakeholders

WE ARE A DATA & TECHNOLOGY COMPANY THAT LOOKS LIKE A TRANSPORT COMPANY

The present looks bright and the future is even brighter

Our analytics and automation platform allows us to understand our passengers and generate instantly actionable and real-time data to power our business and create new revenue generating opportunities.

Having direct access to a city's population with the ability to generate real-time market research and predictive analytics, as well as having the platform to connect the marketplace directly to these customers will allow us to monetize data.

This has the potential to become GET's largest revenue stream in the future.





WE CREATE GLOBAL IMPACT

GET creates a complete transport ecosystem that is anchored on community-owned, centrally managed electric mass transport vehicles that provide an affordable, accessible, efficient and sustainable transport solution that is desperately needed in most of the world's major cities.

**CANADIAN PRIME MINISTER
JUSTIN TRUDEAU AND
TRANSPORTATION SECRETARY
ANTHONY TUGADE LAUNCH THE COMET 3**

**US PRESIDENT BARRACK OBAMA
VIEWS THE ORIGINAL GET WORLDWIDE
COMET PROTOTYPE**

A GLOBAL PROBLEM IS A GLOBAL OPPORTUNITY



The minibus is the primary means of transport for emerging markets and urban centers

The COMET ecosystem is the ideal low cost, low risk, but high impact project that can address the dangers of climate change, generate responsible profit and truly transform urban environments throughout the world.

That mass transport in the Philippines and other emerging markets will go electric is not anymore a question of if, but of when and by who. By working with communities, continuing to innovate, and scaling operations GET is and will continue to be the answer to those last two questions

