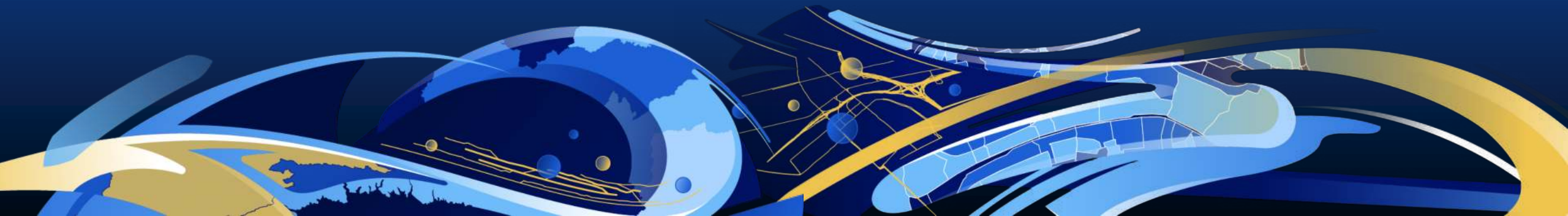


ArcGIS Solutions for COVID-19 Vaccine Distribution

Elaine Ocampo

Geodata Systems Technologies, Inc.



Steps for COVID-19 Vaccine Distribution



Ensuring Access

- Site selection and evaluation
- Mobile clinic placement



Anticipating Demand

- Understanding demographics
- Managing resources
- Workforce capacity



Tracking Progress

- Near real-time dashboards
- Data collection for analysis



Enhancing Communications

- Up-to-date maps and apps
- “Am I Eligible?” app
- Forming community partnerships

ArcGIS Solutions

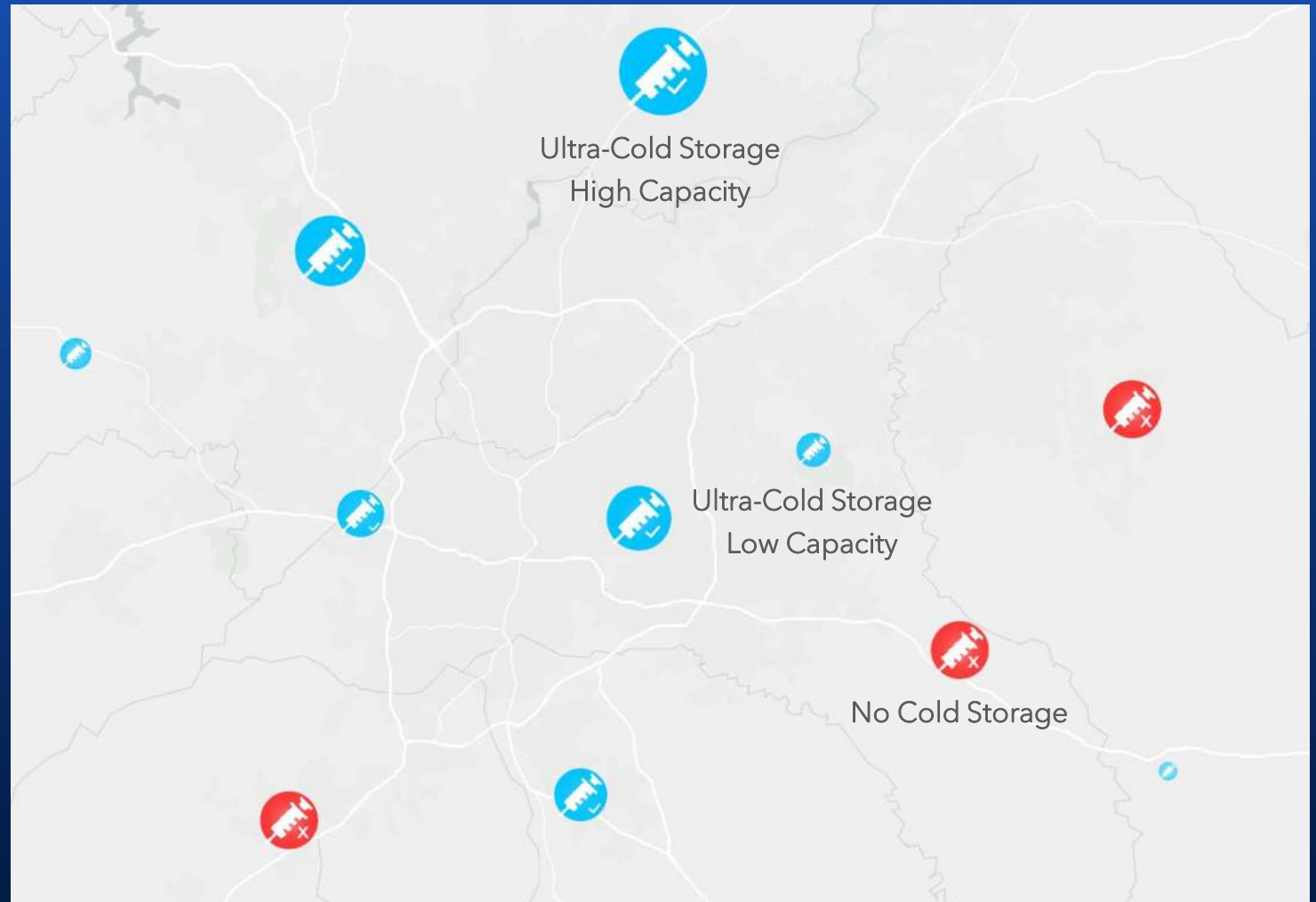
- Understand community conditions
- Work collaboratively with community
- Deploy location-based systems





Ensuring Access

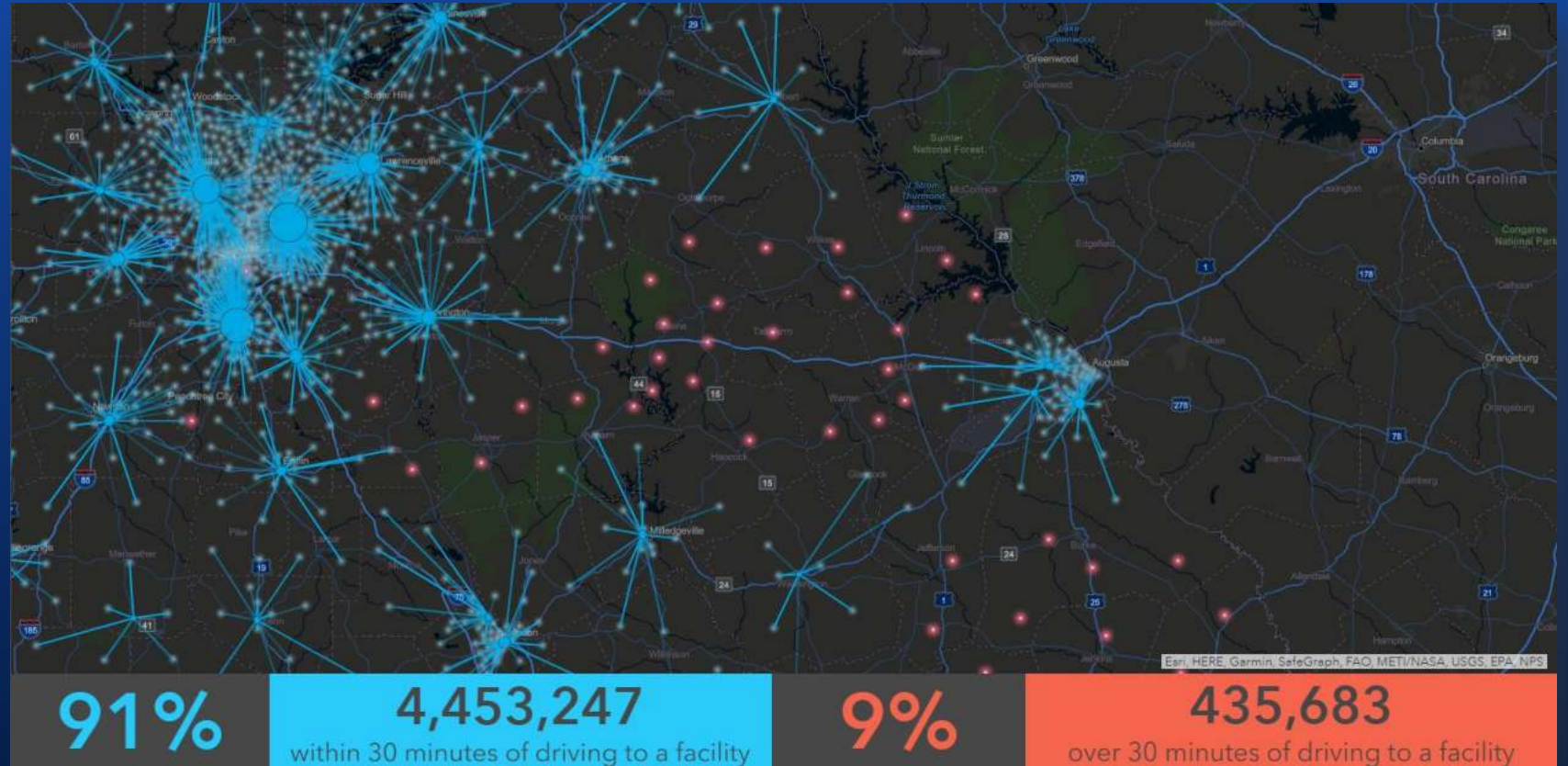
- Site selection and evaluation
- Mobile clinic placement
- Health equity





Ensuring Access

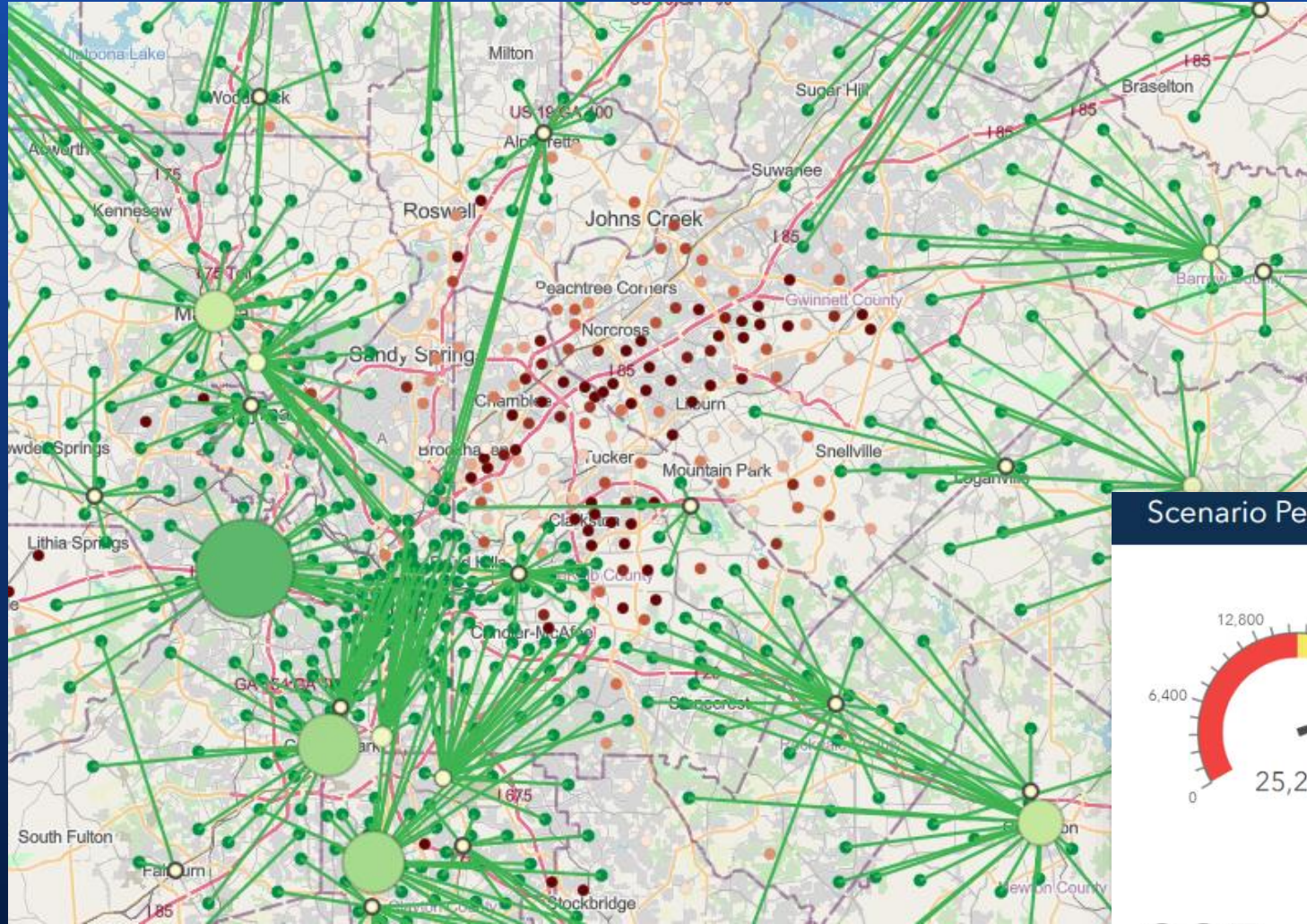
- Site selection and evaluation
- Mobile clinic placement
- Health equity





Anticipating Demand

- Understanding demographics
- Managing resources
- Workforce capacity



Scenario Performance



225

Points of Distribution

79%

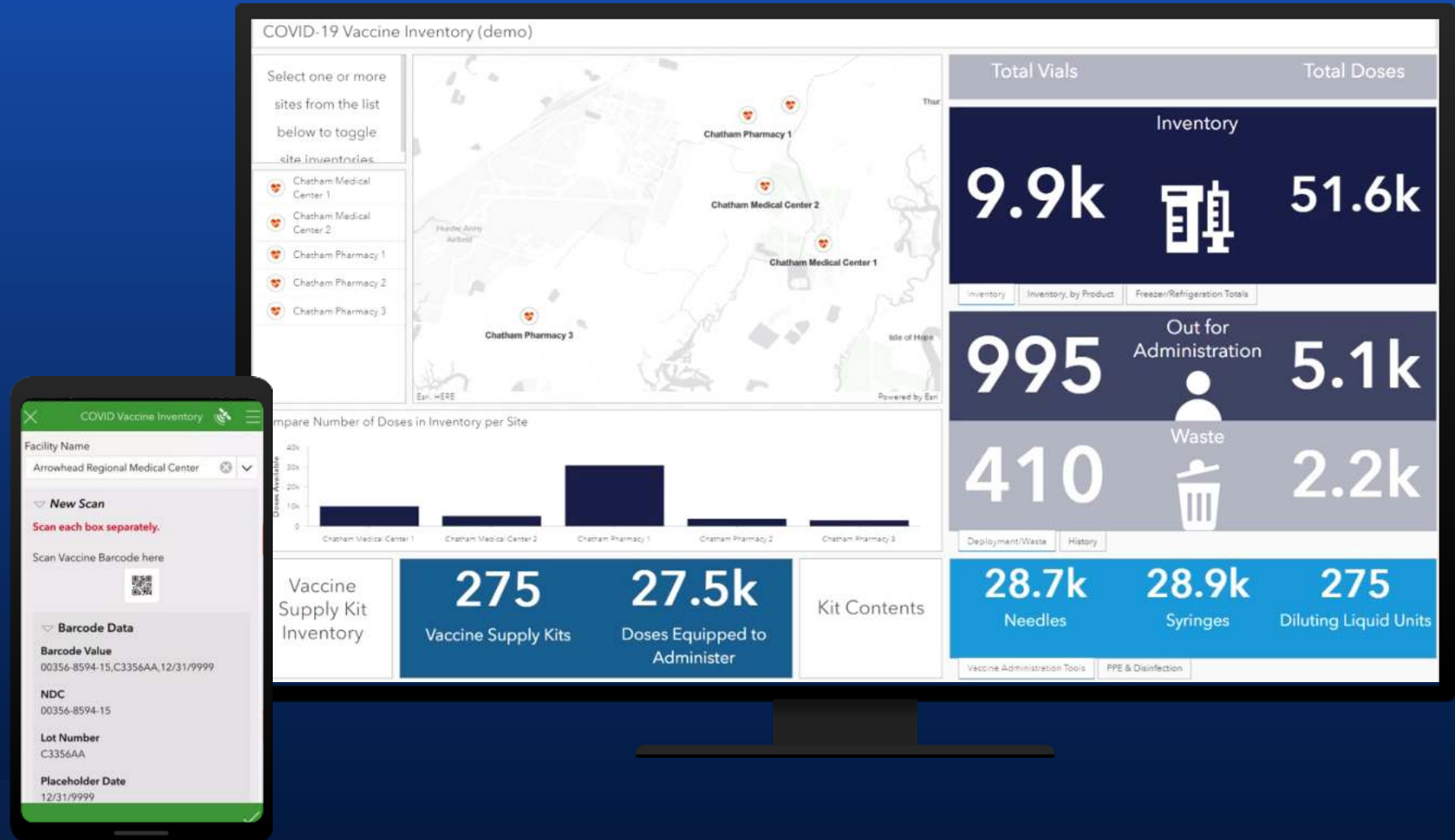
Coverage of daily goal

Vaccine Supplies Inventory

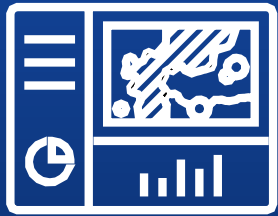


Tracking Progress

- Near real-time dashboards
- Planning and monitoring
- Data collection for analysis

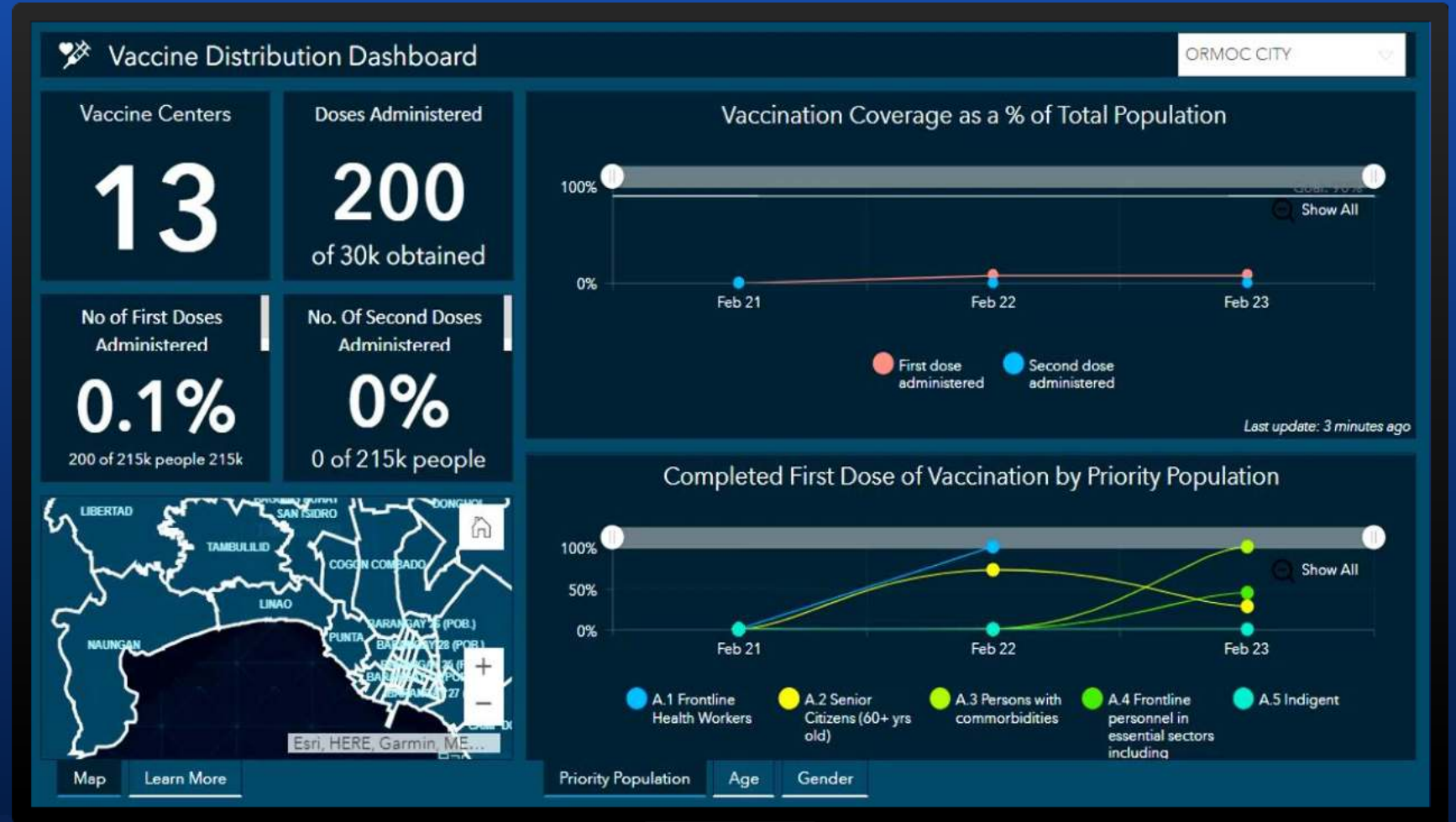


Vaccine Distribution Dashboard



Tracking Progress

- Near real-time dashboards
- Data collection for analysis
- Addressing vaccine hesitancy



Data created for demo purposes only. This does not reflect official data from the LGU.

Vaccine Distribution Reporter



Tabulate Distribution Metrics

- Number of Doses Obtained and Administered
- Number of Partial and Full Series Vaccinations
- Number of Full Series Vaccinations by Priority Groups
- Number of Full Series Vaccinations by Gender and Age

A screenshot of a web application interface for the Vaccine Distribution Reporter. The interface is displayed on a tablet-like device with a dark blue background. At the top right, there is a header bar with the text "Reporting Area: COGON COMBADO" and a dropdown arrow. Below this, a white card contains the following text: "Vaccine Distribution Reporter can be used to tabulate vaccine distribution metrics in the community. Select your reporting area and complete the form by providing cumulative totals of doses obtained, administered and vaccinated populations." Below this is another line of text: "Repeat at a regular interval to provide an accurate picture of the current status and change over time." Underneath, it says "Selected Reporting Area: COGON COMBADO". The "Date Reported*" section has two input fields: one for the date "2/23/2021" and one for the time "05:18 PM". Below that, the "Doses Obtained" section has a heading and a sub-heading: "The total number of individual doses obtained for the specified reporting area as of the date reported." There is a partially visible input field at the bottom of the card.

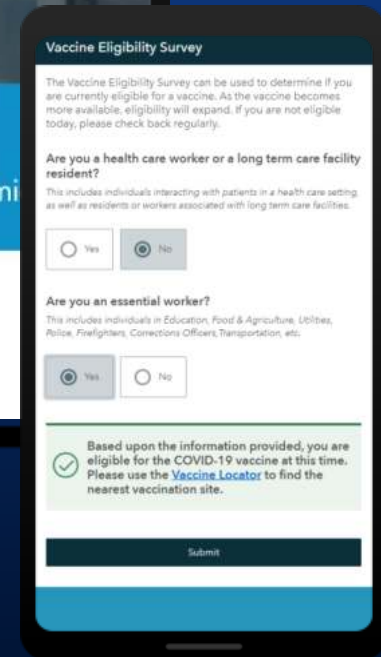
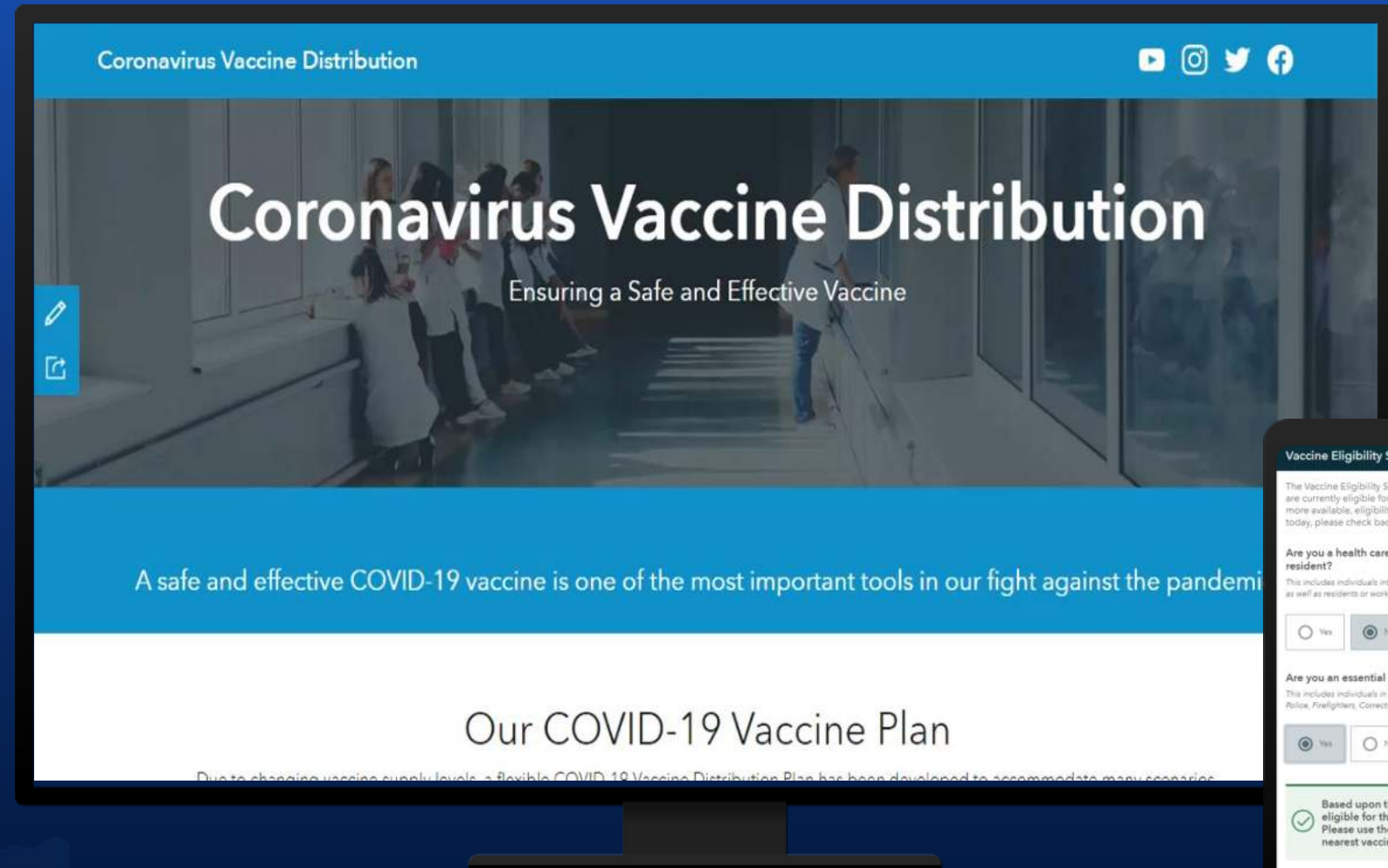
Data created for demo purposes only. This does not reflect official data from the LGU.

Coronavirus Vaccine Distribution Site



Public Awareness

- Provide transparency and equitable approach
- Clearly communicate vaccination plans
- Increase public confidence
- Engage medical volunteers



Vaccine Eligibility Survey



Public Awareness

- Determine eligibility of the citizen to receive the vaccine
- For eligible citizens, there's a link to a Vaccine Locator app
- Provides additional information on vaccinations to the citizen
- Citizen can provide contact information to LGU for additional information related to vaccine program

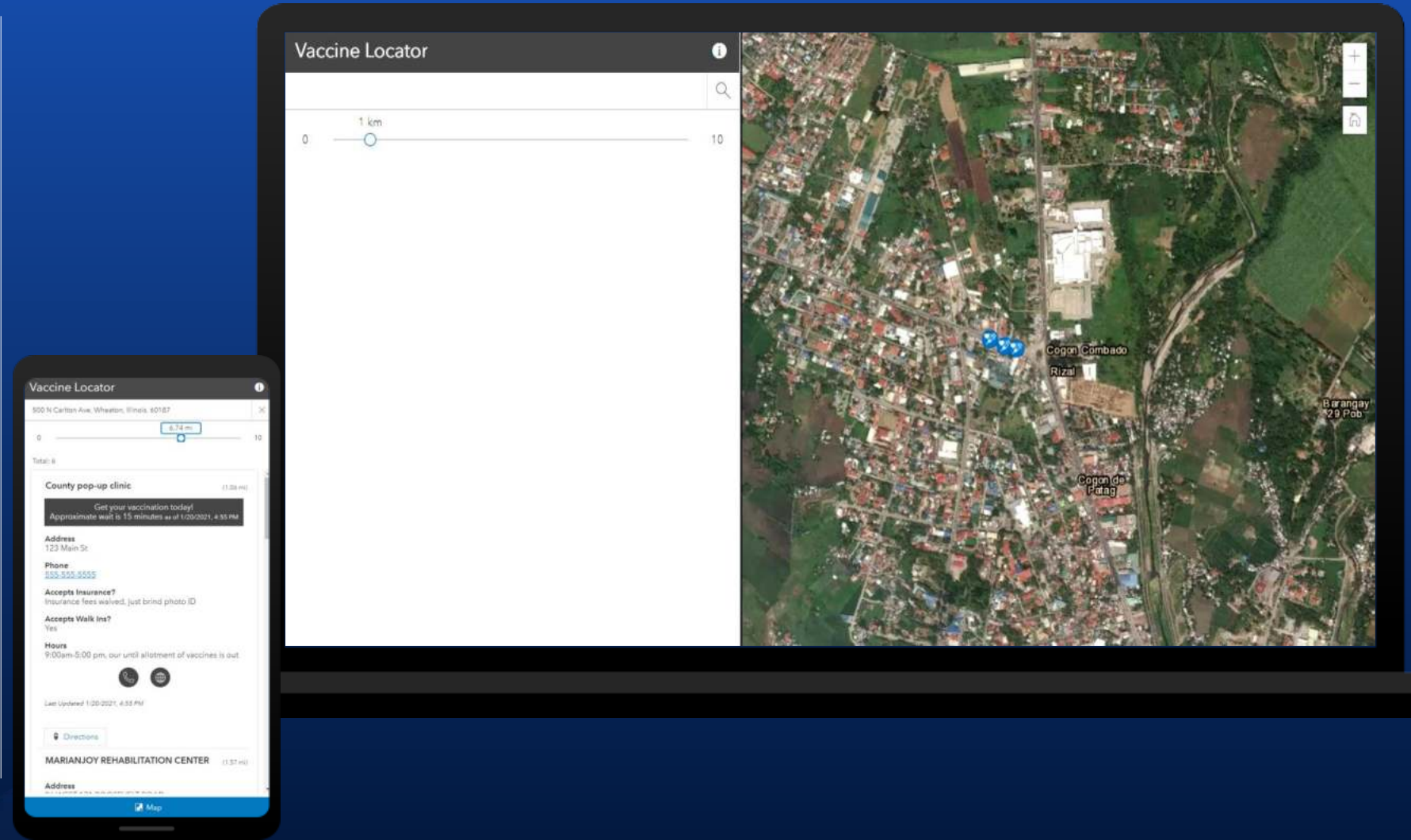
A screenshot of a mobile web browser displaying a survey. The browser's address bar shows 'survey123.arcgis.com'. The survey title is 'Vaccine Eligibility Survey'. Below the title is an introductory paragraph: 'The Vaccine Eligibility Survey can be used to determine if you are currently eligible for a vaccine. As the vaccine becomes more available, eligibility will expand. If you are not eligible today, please check back regularly.' The main question is 'Are you a health care worker or a long term care facility resident?'. A subtext explains: 'This includes individuals interacting with patients in a health care setting, as well as residents or workers associated with long term care facilities.' There are two radio button options: 'Yes' and 'No'. A 'Submit' button is located below the options. The mobile browser's navigation bar is visible at the bottom.

Vaccine Center Locator



Enhancing Communications

- Up-to-date information within reach
- Provides additional information on vaccinations to the citizen

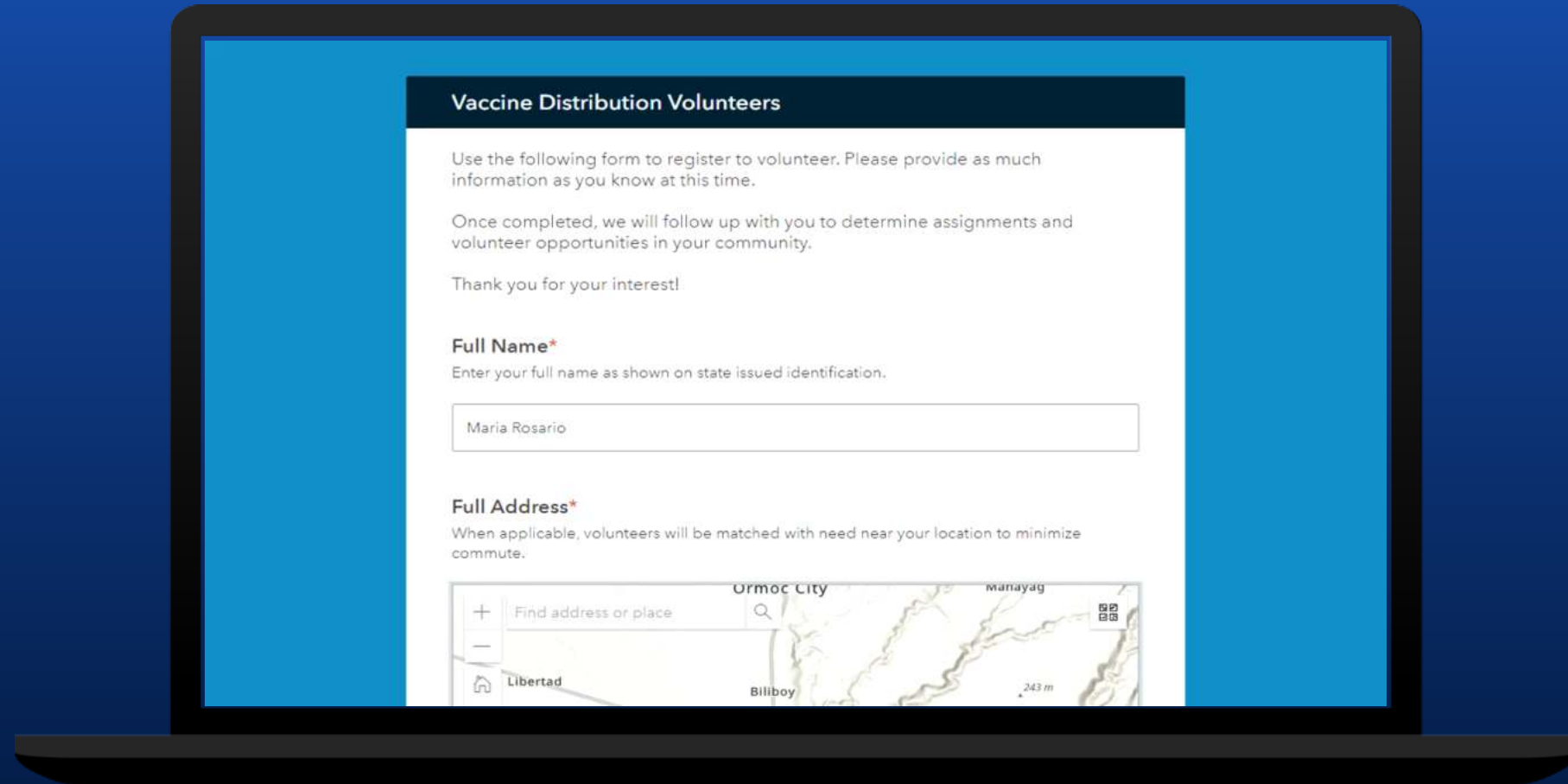


Vaccine Distribution Volunteers



Citizen Engagement

- Engage citizens support
- Forming community partnerships
- Manage resources

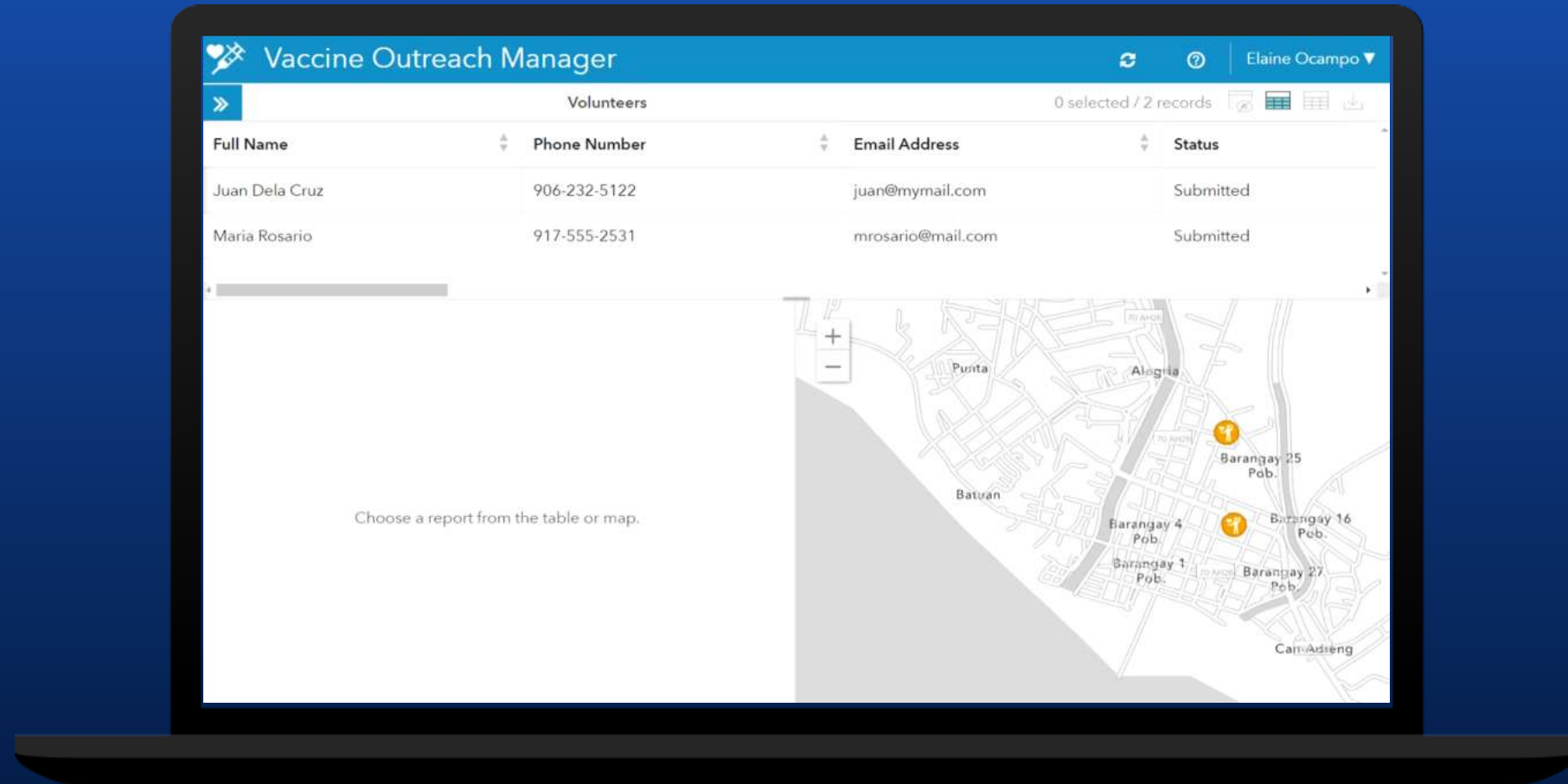


Vaccine Outreach Manager



Citizen Engagement

- Engage citizens support
- Forming community partnerships
- Manage resources





Ensuring Access

- Site selection and evaluation
- Mobile clinic placement



Anticipating Demand

- Understanding demographics
- Managing resources
- Workforce capacity



Tracking Progress

- Near real-time dashboards
- Data collection for analysis
- Health equity



Enhancing Communications

- Up-to-date maps and apps
- "Am I Eligible?" app
- Forming community partnerships
- Addressing vaccine hesitancy

Other tools to support vaccine distribution



Coronavirus Site Safety Solution



Supply Chain and Logistics



Inventory Management

Other tools to support COVID-19 response and recovery



Coronavirus Recovery Dashboard



Contact Tracing

Coronavirus Health Screening Solution

Employee Health Screening

We are taking steps to help ensure the safety and public health of all individuals in our facilities. To achieve this we are asking all employees attest to being symptom-free and not having recent contact with anyone who has tested positive for COVID-19. We will not record your responses to the health related questions.

Campus, Building, or Place Name*

Full Name*
Ex. John Doe
Chris Fox

Email*
Ex. johndoe@email.org
cfox@esri.com

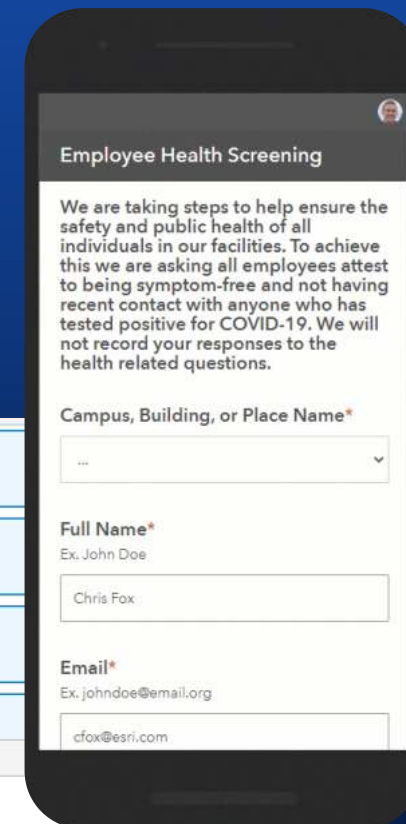
Colin Corbin
Employee
1/27/2021, 4:00 AM

Daniel Leon
Employee
1/27/2021, 4:00 AM

Eric Stoeckel
Visitor
1/27/2021, 4:00 AM

Gussie Schutte
Employee
Temperature Check | Admit | Rejected

Occupancy
34%
17 of 50 (Max)



Thank you!

<https://www.geodata.com.ph/solutions/covid-19-vaccine-distribution>

