

“LIVABLE CITIES LAB”

23 February 2022



Local Autonomy and Local Health Information Exchanges (LHIE) in the Universal Health Care (UHC) Era

Dennis B. Batangan, M.D.,M.Sc.(Heid)

- Senior Technical Consultant, UK Better Health Programme- PHL
- Ateneo de Manila University
 - Institute of Philippine Culture
 - School of Social Sciences
 - School of Government

Objectives of the Presentation

1. Provide an overview of the UHC and Philippine digital health landscape
2. Discuss implications of developments on further local autonomy to digital health
3. Present updates on Local Health Information Exchange (eHATID* SMILHIS) models for UHC implementation

* Utility Model Registration (eHatid EMR and Patent Pending (eHATID System 2.0)

A poster for a lecture series. At the top left, there are logos for Ateneo de Manila University, IPC (Institute of Public Health), and the School of Social Services at Ateneo de Manila University. Below these is the text '02 Universal Health Care eLecture Series'. The main title is 'What is Local Health Information Exchange (LHIE)?'. Below the title is the date and time '04 MARCH 2021 | 1:00 PM - 2:00 PM'. Underneath is the section 'ABOUT THE LECTURE' with a paragraph of text. At the bottom, it says 'Registration Link bit.ly/4March2021eLecture'. On the right side of the poster, there is a large, stylized graphic of a DNA double helix with green and black bands.

Ateneo de Manila University | IPC | INSTITUTE OF PUBLIC HEALTH | SCHOOL OF SOCIAL SERVICES | ATENEO DE MANILA UNIVERSITY

02 Universal Health Care eLecture Series

What is Local Health Information Exchange (LHIE)?

04 MARCH 2021 | 1:00 PM - 2:00 PM

ABOUT THE LECTURE

This online lecture will discuss the policy context of LHIEs and the LHIE in reference to the World Health Organization (WHO) toolkit. The lecture will also describe a draft LHIE LGU policy.

Registration Link bit.ly/4March2021eLecture

Universal Health Care as a Health System Approach

Universal Health Care

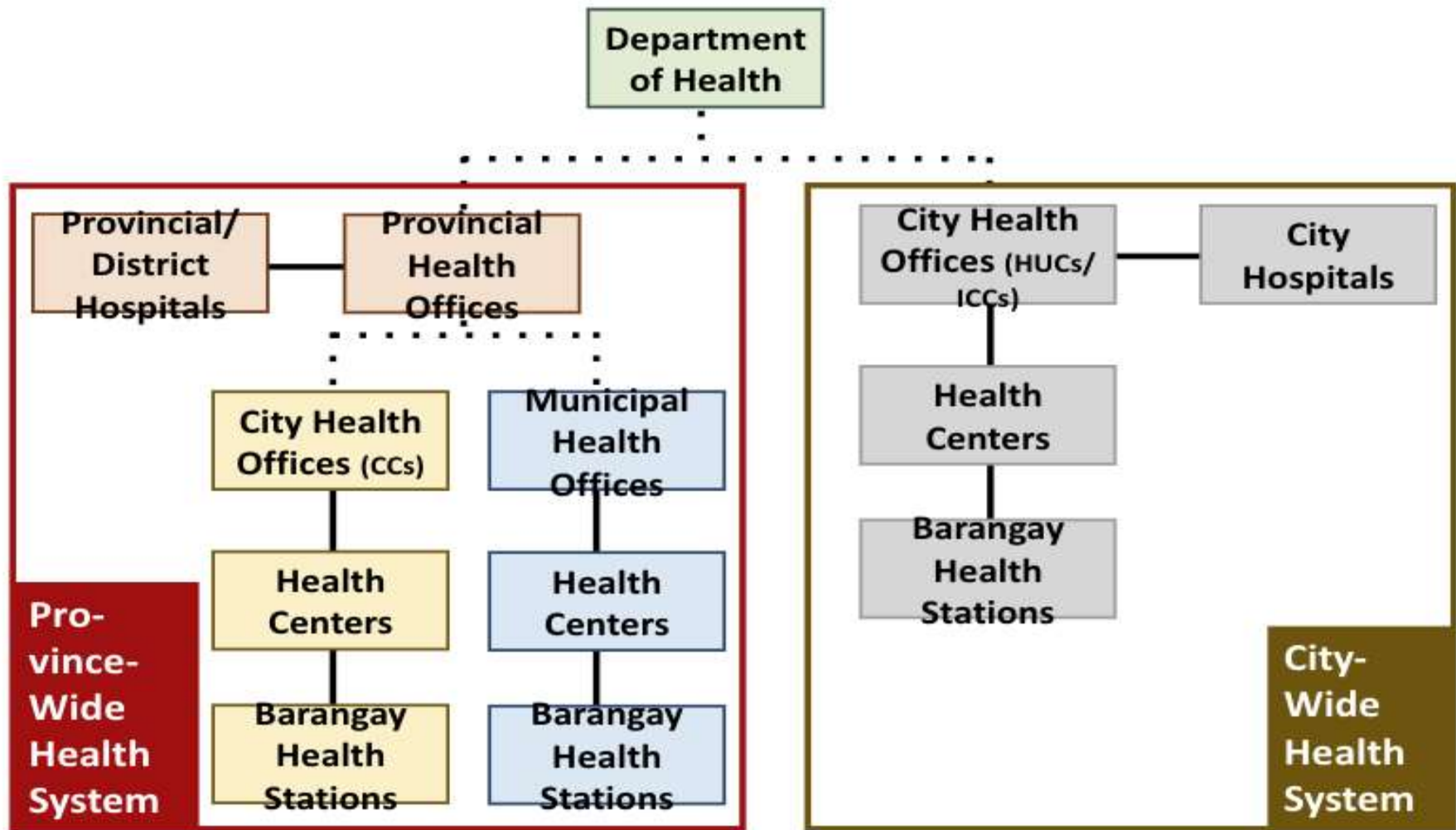
Every Filipino has access to quality, affordable health services, when and where they need them, without ever falling into financial hardship when these services are availed of.

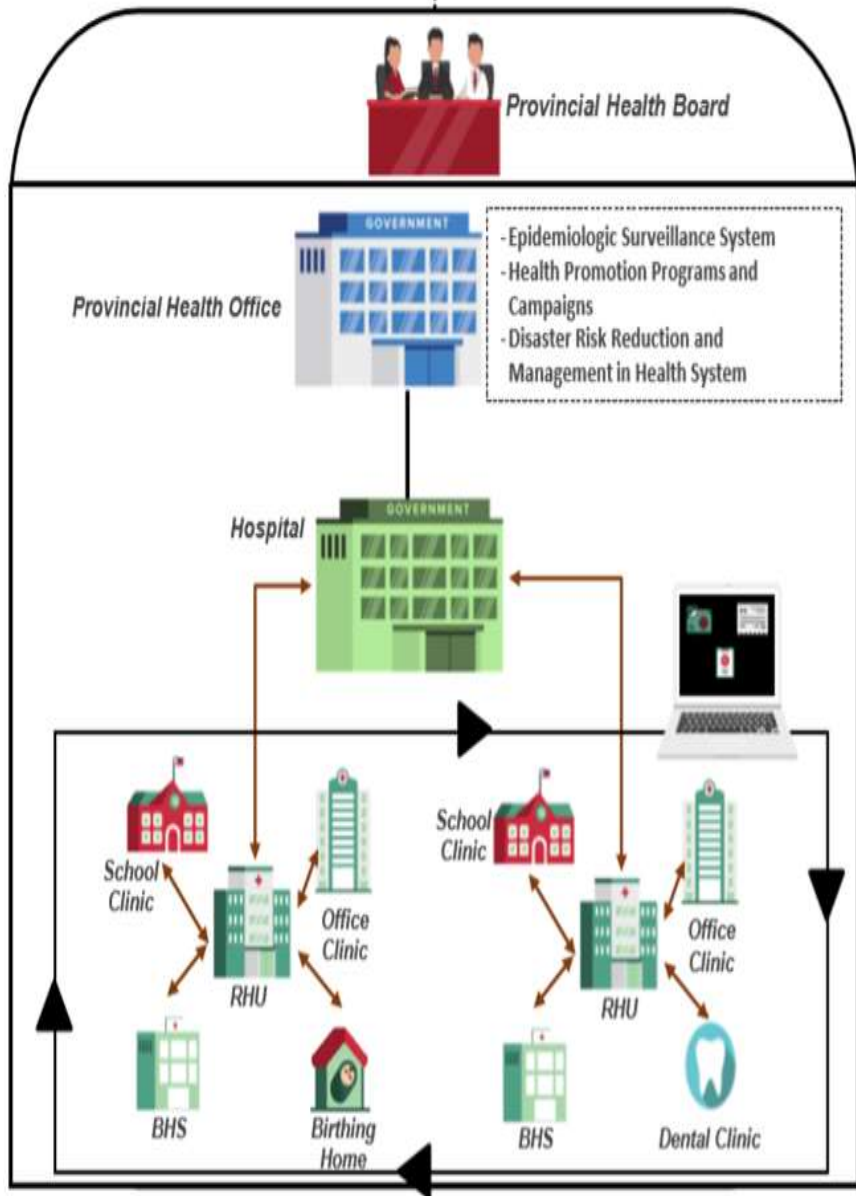


“Ensured generation and use of evidence in health policy development, decision-making, and program planning and implementation.”



Local Health Systems and UHC





Managerial Integration

Consolidation of administrative, technical and managerial functions of the province-wide and city-wide health systems over its resources such as health facilities, human resources for health, health finances, health information systems, health technologies, equipment and supplies **(Sec. 4.21)**

Financial Integration

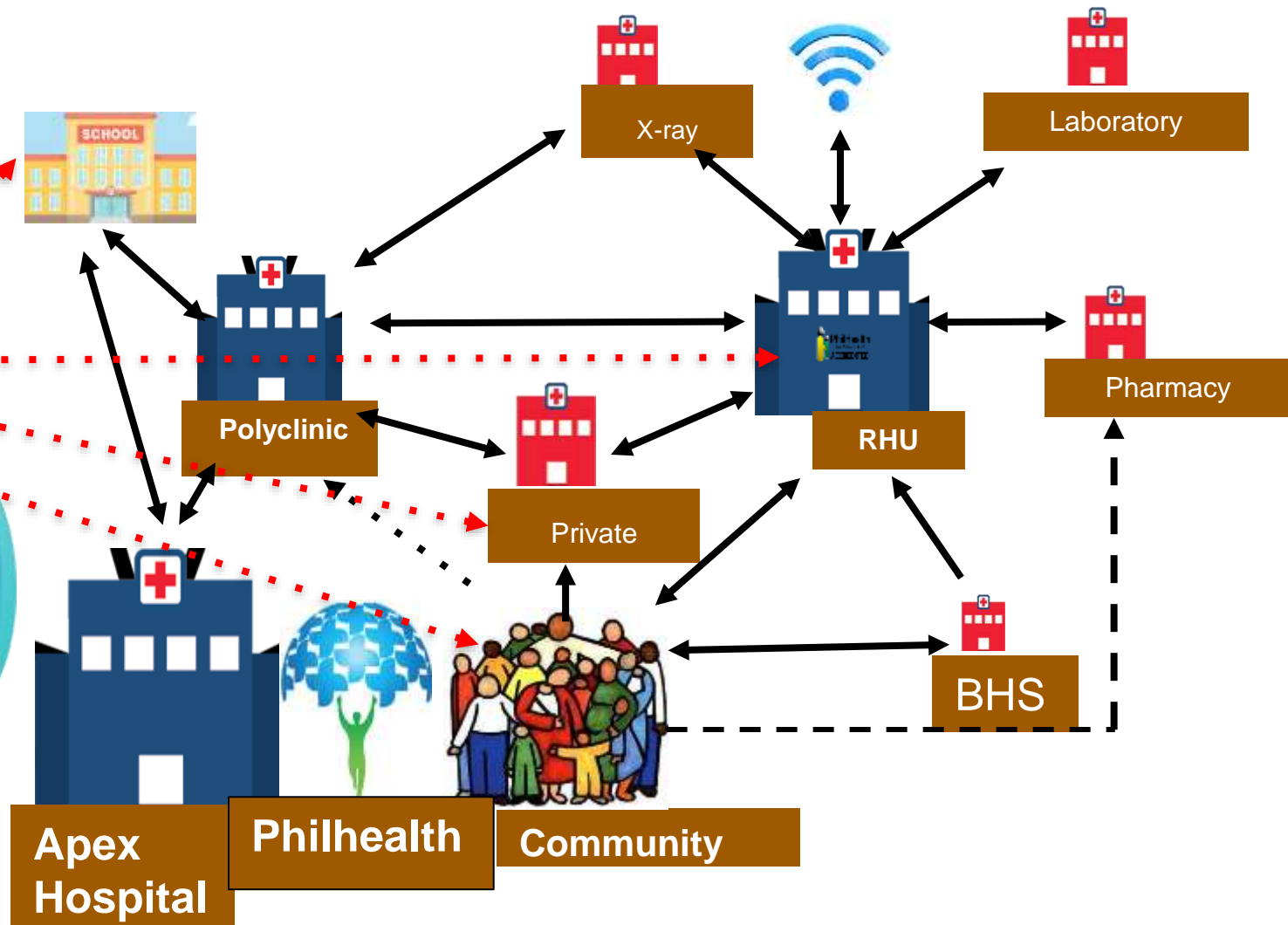
Consolidation of financial resources exclusively for health services and health system development under a single planning and investment strategy by the province-wide and city-wide health system.



UHC Health Care Provider Networks (HCPN)



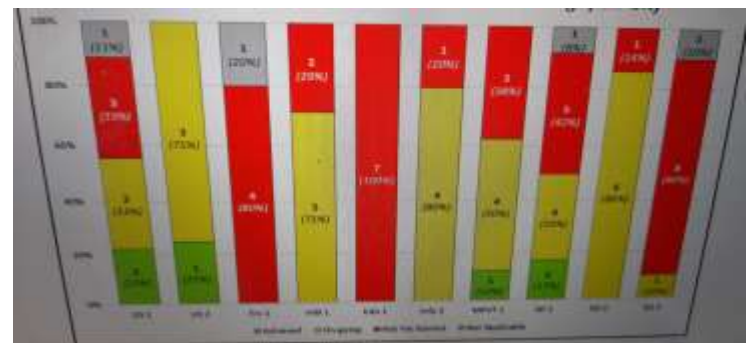
Service Delivery, Human Resources, Information, Commodities/ Infrastructure, Financing, Stewardship



UHC Local Health System Maturity Levels



- Key Result Areas (KRAs) for integration characteristics:
 - *Strategic and Investment Planning*
 - *HRH Management and Development*
 - *Information Management System*
 - *Epidemiology and Surveillance System*
 - *Referral System*



*Based on the baseline assessment conducted by DOH during 4th quarter of FY 2020 (DC No. 2021-0071)



Information Management System

Key Result Areas

KRA 1.1: Baseline Assessment, Gaps Analysis and Investment Needs for the Development and Strengthening of the Information Management System

KRA 2.1: Presence of P/CWHS Health Information Management/ ICT Development Plan

KRA 2.2: Functional EMR System among Health Facilities within the P/CWHS

KRA 2.3: Engagements with Medical Specialists/ Facilities for the Provision of Telemedicine Services

KRA 2.4: Presence of Dedicated ICT Personnel in the P/CHO

KRA 3.1: Validated EMR System that Links the Members of the PCPN to Secondary and Tertiary Care Providers within P/CWHS

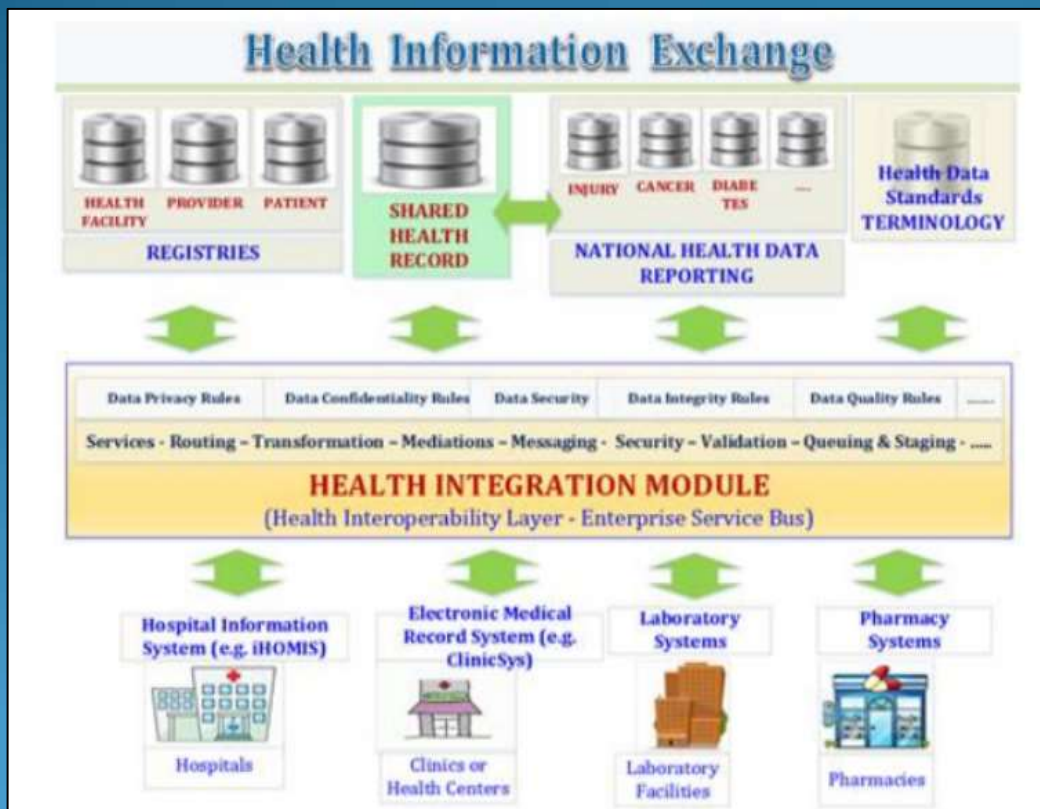
KRA 3.2: Monitoring of P/CWHS Performance on Information Management



Philippine Health Information Exchange (PHIE) ---> Local Health Information Exchange (LHIE)

PHL ID System (PhilSYS); Data Privacy Act, Inter Agency Task Force for COVID 19, Mandanas-Garcia Ruling, UHC issuances- DOH and PhilHealth

PHIE



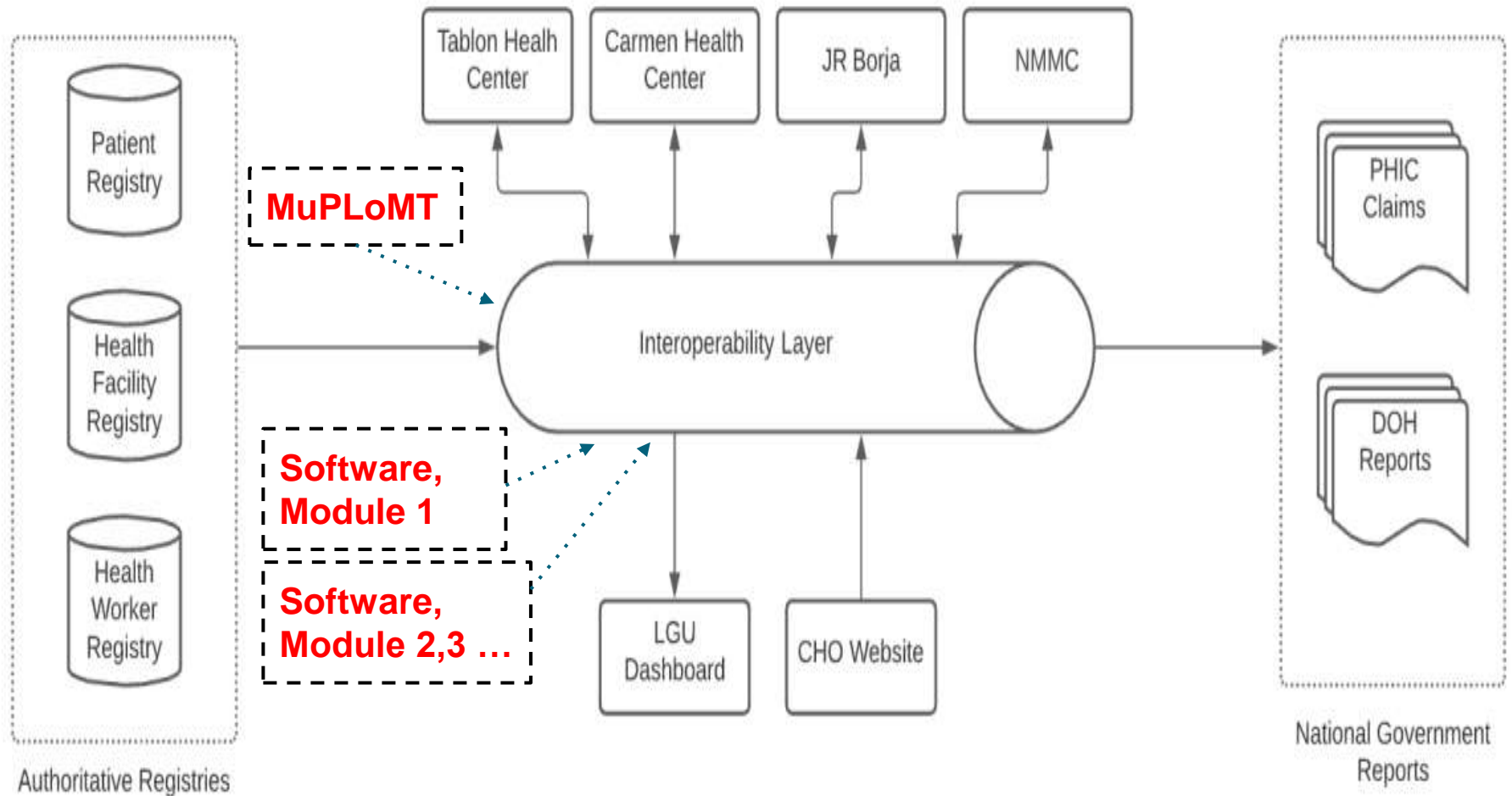
LHIE 1



LHIE 2,3 ...



Open Local Health Information Exchange (LHIE) Architecture



Better Health Programme Philippines

WS1

NCD
Strategies

Assist LGUs in developing and implementing NCD program activities in line with the Annual Operations Plan

- Gestational Diabetes Mellitus (GDM) Clinical Pathway
- Health Technology Assessment (HTA) Trainings

WS2

Education
and Training

Assist LGUs in developing training and education courses and events that are responsive to local health needs

WS3

Digital Health
Initiative

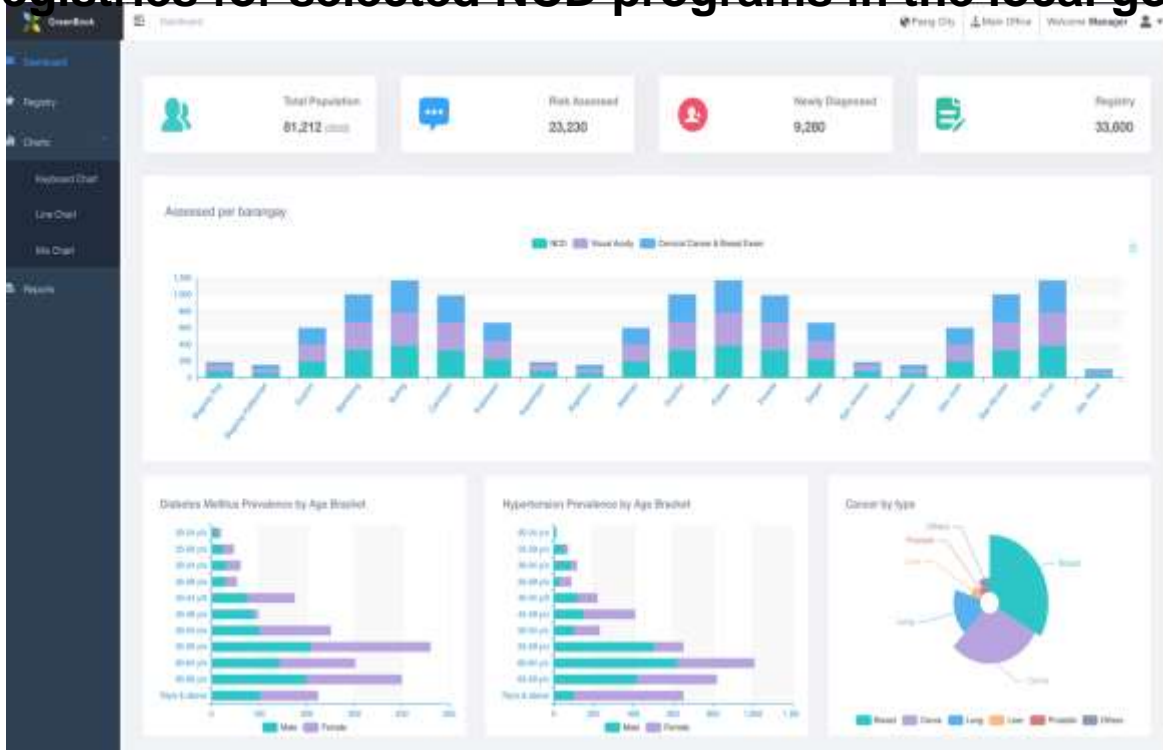
Assist LGUs in implementing an NCD electronic recording and reporting system

- Development of the Multi-Programme Local Mapping Tool (MUPLOMT) software and assisting Pasig City in its adoption and utilization

Better Health Programme South East Asia

Multi-Programme Local Mapping Tool (MuPLoMT)

The ***NCD Multi-Programme Local Mapping Tool*** is an electronic NCD recording and reporting application with notification features that will support the disease registries for selected NCD programs in the local government setting.



Disease registries formats and reporting schedules are defined by DOH AOS and the DOH 2018 Field Health Service Information System (FSHIS) Manual of Procedures.

MuPLoMT Features

Dashboard

- shows key statistics and visualizations such as graphs and charts of NCD data.

Patient Registry

- list of patients in the database incl. facility visits and treatment or management records.
- with filters on parameters such as by NCD program, age, sex, and vaccination status

Reports

- target client lists per registry, formatted required reports for specific NCD programs and aggregate reports.

FHSIS Non-Communicable Disease Prevention and Control Services							
Indicators (Col 1)	Eligible Population/Denominator (Col 2)	Counts			% (Col 5/E.Popa/100) (Col 6)	Interpretation (Col 7)	Recommendations/Actions to be Taken
		Male (Col 3)	Female (Col 4)	Name Total (Col 5)			
1. No. of adults risk-assessed using PI		244	327	571	57.1		
2. Current Smokers - Total		65	24	89	8.9		
3. Alcohol Binge Drinkers - Total		78	17	95	9.5		
4. Overweight/Obese - Total	1000	19	35	54	5.4		
5. No. of adult women screened for C		0	52	52	52		
6. No. of adult women found positiv		0	0	0	0		
7. No. of adult women screened for t		0	50	50	50		
8. No. of adult women with suspicio	100	0	1	1	1		
9. No. of newly-identified hypertens		50	67	117			
10. No. of newly-identified adults wi		14	22	36			
11. No. of senior citizens screened fo		0	2	2	2		
12. No. of senior citizens diagnosed i		0	1	1	1		
13. No. of senior citizens who receiv		0	0	0	0		
14. No. of senior citizens who receiv	100	0	1	1	1		

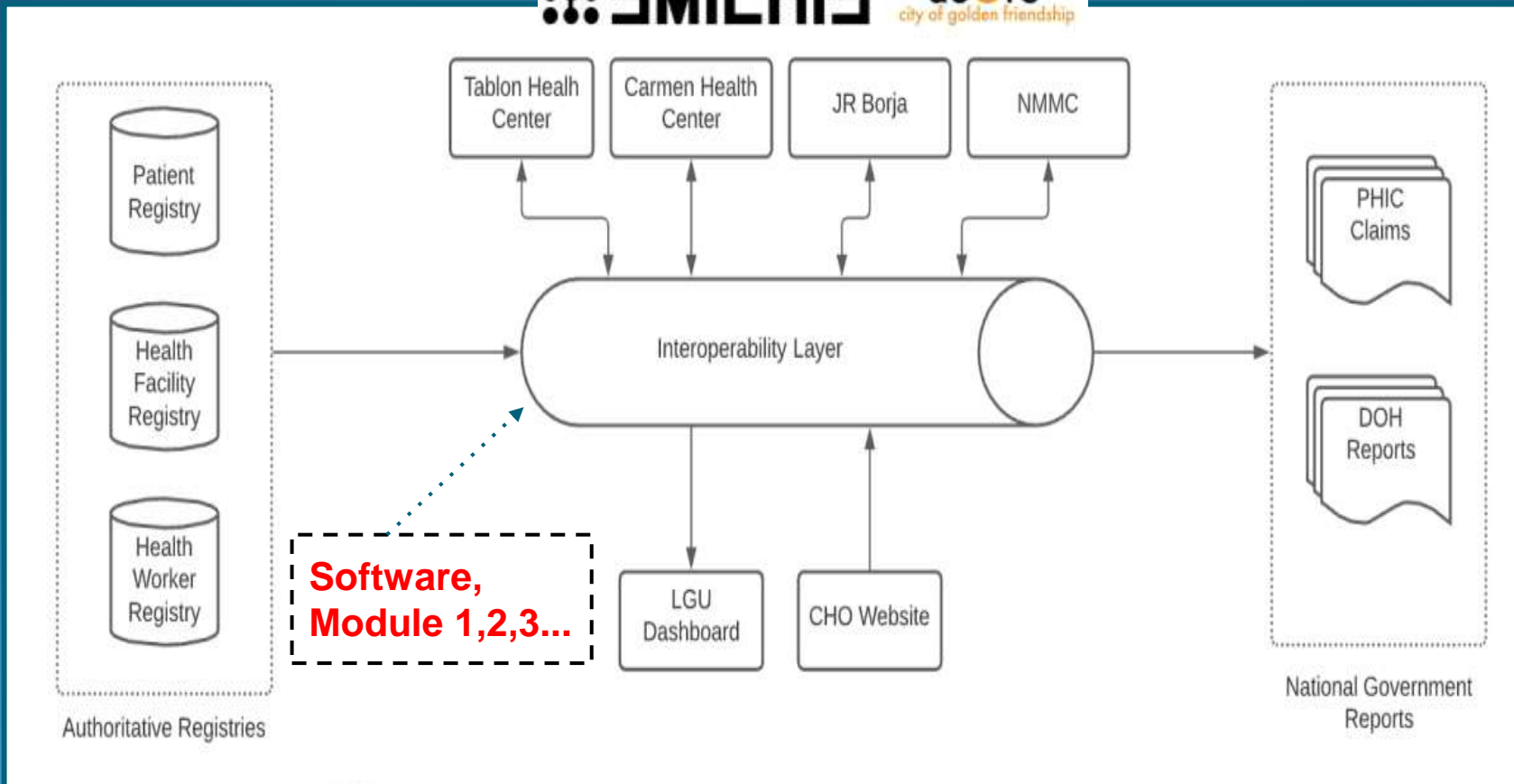
MuPLoMT Vulnerability Profiling List for COVID-19 vaccination and health services prioritization and the charts for visualizing the generated reports.

***Data Deduplication and Quality Check (DDQC) Module**

SMILHIS* as a Local Health Information

*Smarter and Integrated Local Health Information System

Exchange (LHIE)



cagayan de Oro
city of golden friendship



ipc SMILHIS



SMILHIS* as a Local Health Information

*Smarter and Integrated Local Health Information System

Exchange (LHIE)



cagayan
de Oro
city of golden friendship



ipc SMILHIS



"LIVABLE CITIES LAB"

Digital Health Data and Analytics for Better Public Health Systems



Local Autonomy and Local Health Information Exchanges (LHIE) in the Universal Health Care (UHC) Era

Dennis B. Batangan, M.D.,M.Sc.(Heid)
Dbatangan@ateneo.edu

- Senior Technical Consultant, UK Better Health Programme- PHL
- Ateneo de Manila University
 - Institute of Philippine Culture
 - School of Social Sciences
 - School of Government