

clark
It works. Like a dream.



BCDA

Bases Conversion and
Development Authority

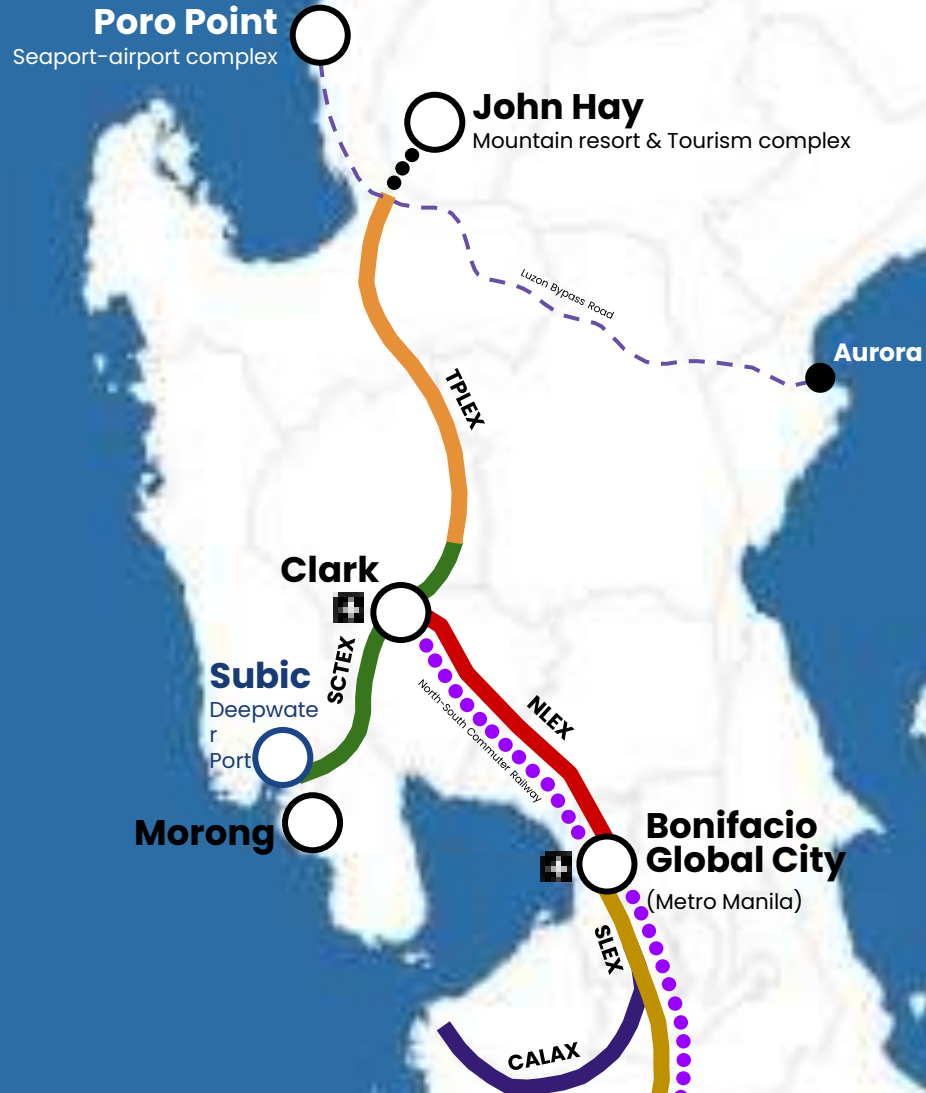
- BCDA is a government corporation tasked with developing former military bases into economic hubs in the Philippines.
- Prime mover of national development.
- Key driver of the national government's "Build Better More" Infrastructure Program.



The **BCDA** Ecozones

5 Special Economic Zones (including Subic)

BCDA is committed to leveraging the potential of its strategic SEZs to foster **sustainable growth** and create **opportunities for all.**

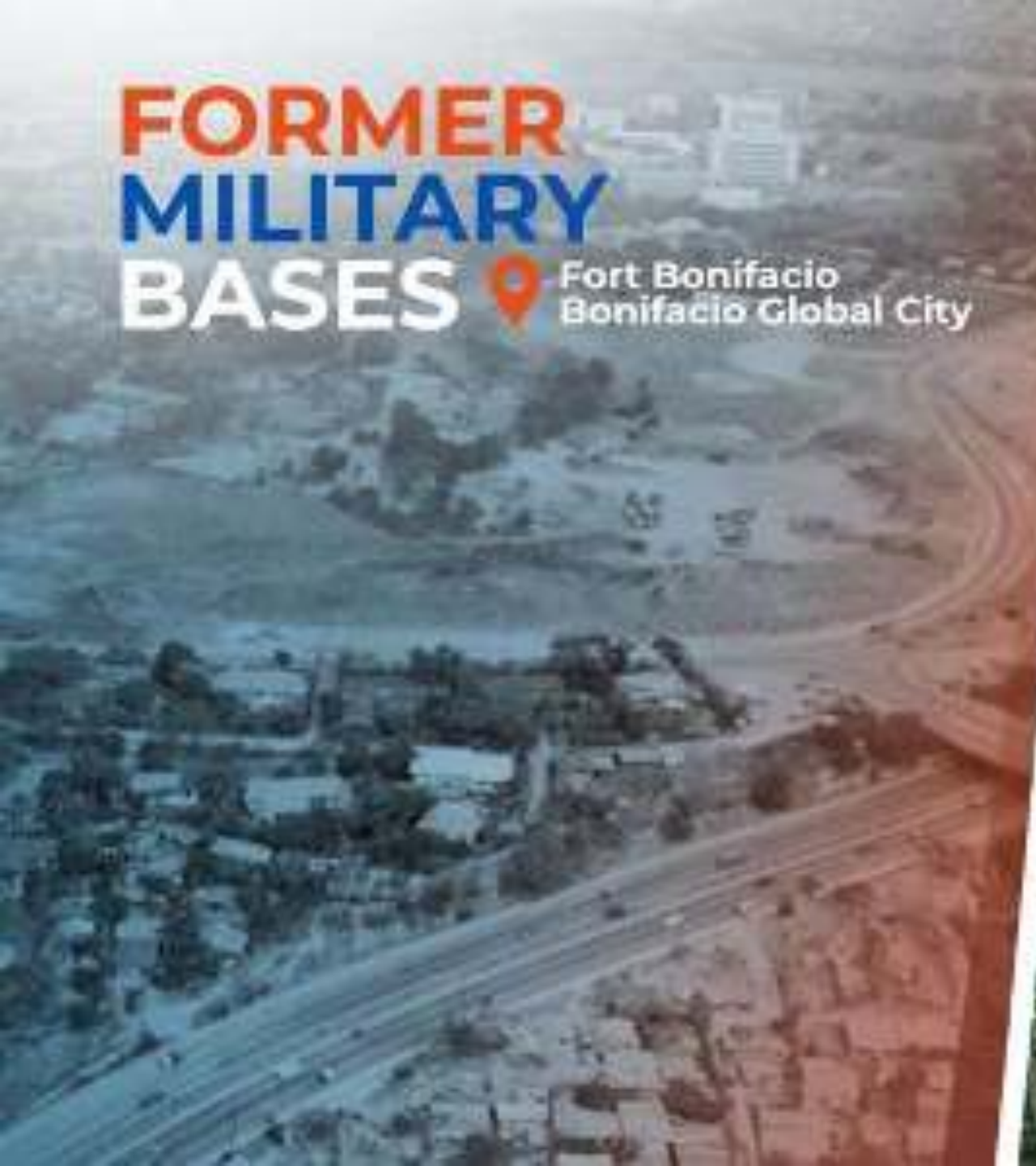




SUCCESSFUL PROJECTS

FORMER MILITARY BASES

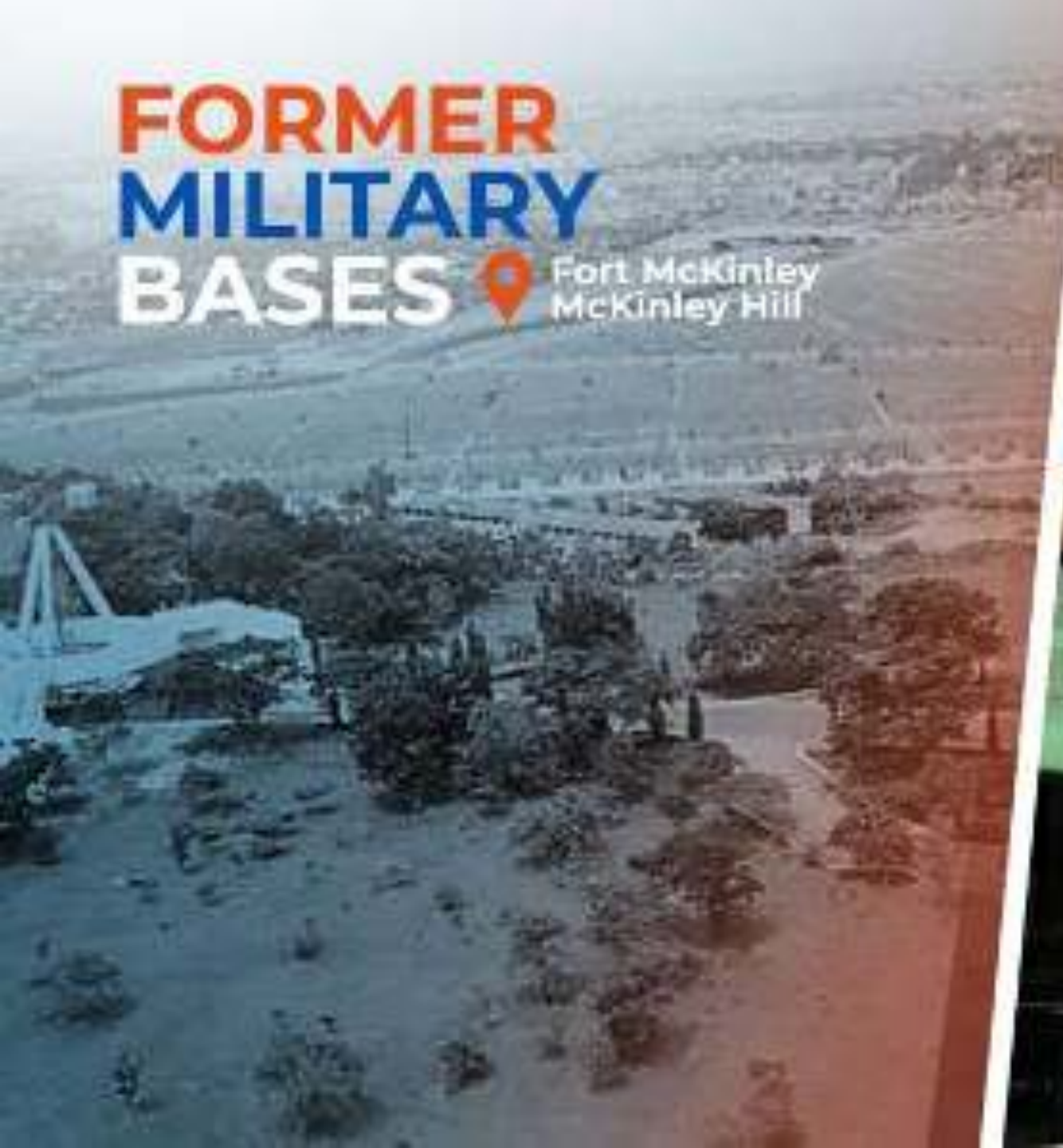
Fort Bonifacio
Bonifacio Global City



FORMER MILITARY BASES



Fort McKinley
McKinley Hill



FORMER MILITARY BASES



Villamor Air Base
Newport City



Expanding Economic Growth

Clark Freeport and Special Economic Zone

- Located in Central Luzon Region
- Only 90 km away from Manila

New Clark City

9,450 hectares

Clark Freeport Zone

Mixed-use Area 2,100 hectares

Civil Aviation Complex 2,300 hectares

Sub-zone

18,000 hectares





CLARK FREEPORT ZONE

LEISURE AND
TOURISM



one clark
It works. Like a dream.

NEW CLARK CITY

ALTERNATIVE
GOVERNMENT HUB
R&D AND TECHNOLOGY



CLARK AIRPORT CITY

GATEWAY AND
LOGISTICS HUB



Clark Central Business District

The next largest & most modern CBD in the country

Contractual Scheme	Joint Venture Agreement
Land area	100 hectares mixed use township
Project Launch	H1 of 2024



Clark International Convention & Exhibition Complex

The country's largest international
convention & exhibition complex

Tokyo International Exhibition Center
Photo for reference only

Clark's robust infrastructure serves as a strong foundation for these investment opportunities



**PNR North-South
Commuter Rail**



**SUBIC-CLARK
TARLAC
EXPRESSWAY**



**Clark
International
Airport**



**High Speed Internet
Infrastructure**
(Last Mile Connectivity)

SCTEX

SUBIC-CLARK-TARLAC EXPRESSWAY

LONGEST EXPRESSWAY IN THE
PHILIPPINES

IN PARTNERSHIP WITH



Clark International Airport





CRK

Clark International Airport

An aerial photograph showing a multi-level highway interchange under construction. Several large, white concrete overpasses are visible, spanning over the existing and future roadways. The area is a mix of dirt, green grass, and some buildings. In the background, a large, reddish-brown hillside is visible under a clear sky. The text 'North South Commuter Rail' is overlaid in large white font on the right side of the image.

North South Commuter Rail

Manila to Clark in less than an hour
First Phase 2025



Luzon Bypass Infrastructure

Revolutionizing the Philippines' internet connectivity

Provide 500,000 bandwidth capacity

Faster and more affordable internet for the entire country for faster delivery of government services



BY THE NUMBERS

1st **Smart, Green & Resilient**

Metropolis in the Philippines

Land Size

23,351.46 Acres

(9,450 hectares)

Land Rights

75 Years

Thru Lease or
Joint Venture Agreements

Projected Population

1.2 Million

Projected Employment

600,000+ workers

Open Spaces & Forest Reserves

60%++

6,000+ hectares of forests, public spaces and parks



Disaster-Resilient

Ensure business continuity

EARTHQUAKES

New Clark City is approximately 19 km away from the nearest fault line, the East Zambales Fault. The facilities in NGAC can also withstand an 8.5 magnitude earthquake.

LAHAR FLOW

NGAC is 35 km from Mount Pinatubo but was not reached by the lahar flow during the last eruption in 1991 because of its high elevation.

FLOODING

The elevation is 60 m above sea level as compared to Manila's 5 m. The storm drainage is designed to accommodate a 1,000-year flood level.

TSUNAMIS

New Clark City is 54.17 km away from the nearest coastline.

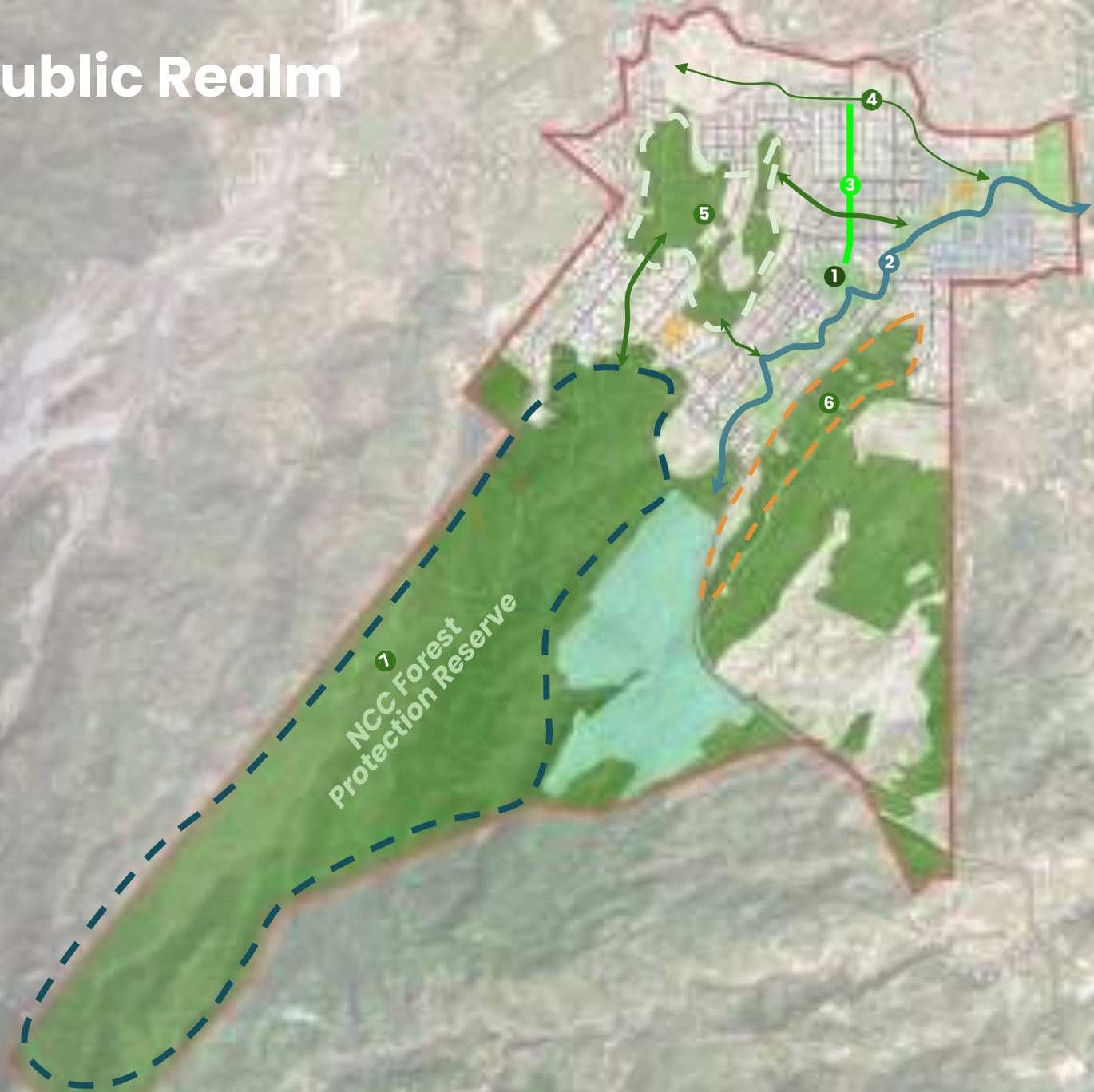
SUPER TYPHOONS

Super typhoons and wind velocities are minimized due to the surrounding mountain ranges of Sierra Madre and Cordillera Mountains.



Open Space Network & Public Realm

Green Space	
1	Central Park
2	River Park Corridor
3	Green Boulevard
4	Linear Park Corridor
5	Clark Highlands Reserve
6	South Hill Green Reserve
7	NCC Forest Protection Area




Overall Sustainability Framework for NCC

Effective Governance

A Green City

A People-Centric City



**Parallel/
Complementary
Systems (Contingency)**



**Critical
Infrastructure**



**Technology Infra for
Smart City Ecosystems**



**Smart & Efficient
Structures**



**Sustainable
Urban Mobility**



**Eco-Friendly
Development Solutions**



Liveability



Connectivity



Walkability

**NEW
CLARK
CITY**



BCDA
Borough of Clark County
Development Authority

National Government Administrative Center

By virtue of Executive Order 119, NCC will be home to an integrated government center outside the National Capital Region in case of disaster, and directing the whole-of-government to establish satellite offices therein.

Basic Needs & Connectivity



Department of Agriculture



Department of Public Works and Highways



Department of Transportation



Department of Education



Department of Science and Technology



National Irrigation Administration

Economic & Finance, GFIs & GOCCs



National Economic and Development Authority



Philippine Economic Zone Authority



Bangko Sentral Ng Pilipinas



Games and Amusement Board



Bureau Of Customs



Philippine Tax Academy

Legislative & Judicial Cluster



Supreme Court of the Philippines



Regional Trial Court

Social Safety & Security



National Bureau of Investigation



Philippine National Police



Department of National Defense



National Security Council



Central Bank of the Philippines

Manila to Clark in less than an hour



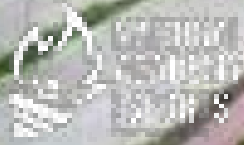


Virology and Vaccine Institute of the Philippines



New Clark City

State Universities and High Schools



National Academy of Sports



University of the Philippines



Philippine Science High School



Polytechnic University of the Philippines

Hann Lux Mountain Resort

440 hectares



New Clark City Central Park

45 hectares





River Park Corridor

INVESTMENT OPPORTUNITIES

- Filinvest Innovation Park
- Industrial Areas
- Residential Developments
- Mixed Use Commercial in the Airport Area
- Clark Digital Infrastructure

NEW CLARK CITY

Industrial Areas

- 1** Industrial Estate 1
247 acres (100 has)
- 2** Industrial Estate 2
618 acres (250 has)
- 3** Industrial Estate 3
247 acres (100 has)
- A** Filinvest Innovation Park



Filinvest Innovation Park

120-hectare industrial park
Manufacturing, Storage, Cold Storage, Warehousing,
Food Processing, Pharmaceutical





ST BAKER
ENERGY
INNOVATION
FUND

FILINVEST
INNOVATIONPARK
NEW CLARK CITY



Affordable Homes

Multi-tenure, climate-resilient residential complex

Contractual Scheme	Joint Venture Agreement
Land area	35 hectares affordable residential complex (6,000 units)
Project Launch	Q1 of 2024



NCC Common ICT Infrastructure

Contractual Scheme	Lease or Joint Venture
Legal Basis	Lease or BCDA JV Guidelines
Cooperation Period	30 years
Project Launch	Q1 of 2024



Role of Private Sector

Design, build, and deploy conduits in accordance with BCDA masterplan and design standards for NCC



Deploy dark fiber within conduits up to locator premises



Repair and maintain passive assets and hosting site to contracted service levels



Establish a neutral hosting site where active service providers will co-locate active equipment and patch into NCC fiber

Lease out fiber on wholesale basis to:

- ISPs
- Mobile Network Operators
- Data Center operators
- Independent Tower Companies

Investment Opportunities

Data Center Colocation Facility

Private Sector Partner to design, finance, develop and manage a Data Center Colocation Facility in NCC. The partner to arrange for a network management service to connect NCC to the spectrum.

Contractual Scheme	Lease or Joint Venture
Land Area	10 hectares, 50 megawatts data center colocation
Cooperation Period	30 years
Project Launch	H2 of 2024





Investment Opportunities

Solid Waste Management and Waste-to-Energy Project

Build, operations and maintenance,
Management of existing waste management assets
within the sanitary landfill site; and
Waste collection service in New Clark City

Maishima Waste-to-Energy Facility, Osaka



25-megawatt Solar Farm

37-hectares
3-km away from New Clark City
power substation, directly accessible
thru major thoroughfare



Transit-Oriented Metropolis

Leveraging on Clark's "15-minute city" concept by becoming a model city for mass transportation

Osaka Station
Photo for reference only

SMART MOBILITY DEMONSTRATION PROJECT



Zennion



NEW
CLARK
CITY

Future Projects & Investment Opportunities

Mixed Use, Retail and F&B



BCDA
Bicutan-Corona Development Authority



24th *hot air*
BALLOON RACES

February 16-18, 2024

Partner with us



marketing@bcda.gov.ph
bdd@bcda.gov.ph



TheBCDAGroup